

**SMPD2 Antibody (monoclonal) (M01)****Mouse monoclonal antibody raised against a full length recombinant SMPD2.****Catalog # AT3962a****Specification**

---

**SMPD2 Antibody (monoclonal) (M01) - Product Information**

Application	WB, IHC, E
Primary Accession	<a href="#">O60906</a>
Other Accession	<a href="#">BC000038</a>
Reactivity	Human
Host	mouse
Clonality	Monoclonal
Isotype	IgG3 Kappa
Calculated MW	47646

**SMPD2 Antibody (monoclonal) (M01) - Additional Information****Gene ID** 6610**Other Names**

Sphingomyelin phosphodiesterase 2, Lyso-platelet-activating factor-phospholipase C, Lyso-PAF-PLC, Neutral sphingomyelinase, N-SMase, nSMase, SMPD2

**Target/Specificity**

SMPD2 (AAH00038.1, 1 a.a. ~ 423 a.a) full-length recombinant protein with GST tag. MW of the GST tag alone is 26 KDa.

**Dilution**

WB~~1:500~1000

**Format**

Clear, colorless solution in phosphate buffered saline, pH 7.2 .

**Storage**

Store at -20°C or lower. Aliquot to avoid repeated freezing and thawing.

**Precautions**

SMPD2 Antibody (monoclonal) (M01) is for research use only and not for use in diagnostic or therapeutic procedures.

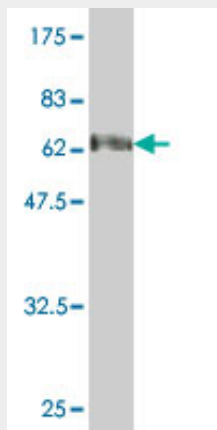
**SMPD2 Antibody (monoclonal) (M01) - Protocols**

Provided below are standard protocols that you may find useful for product applications.

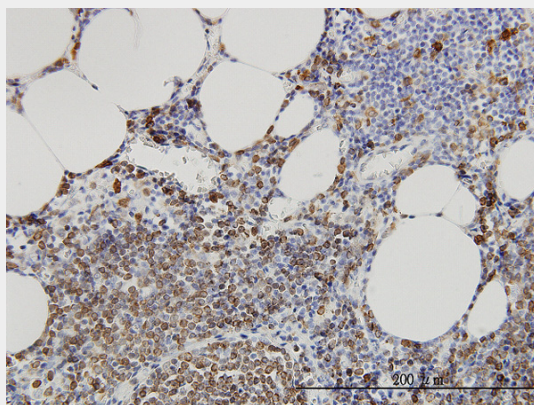
- [Western Blot](#)
- [Blocking Peptides](#)
- [Dot Blot](#)

- [Immunohistochemistry](#)
- [Immunofluorescence](#)
- [Immunoprecipitation](#)
- [Flow Cytometry](#)
- [Cell Culture](#)

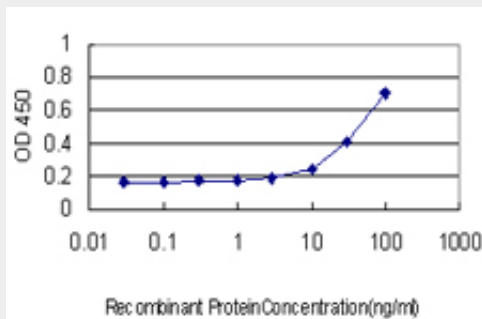
### SMPD2 Antibody (monoclonal) (M01) - Images



Antibody Reactive Against Recombinant Protein. Western Blot detection against Immunogen (72.27 KDa) .



Immunoperoxidase of monoclonal antibody to SMPD2 on formalin-fixed paraffin-embedded human lymph node. [antibody concentration 3 ug/ml]



Detection limit for recombinant GST tagged SMPD2 is approximately 10ng/ml as a capture antibody.

### SMPD2 Antibody (monoclonal) (M01) - Background

This gene encodes a protein which was initially identified as a sphingomyelinase based on sequence similarity between bacterial sphingomyelinases and a yeast protein. Subsequent studies showed that its biological function is less likely to be as a sphingomyelinase and instead as a lysophospholipase.

### **SMPD2 Antibody (monoclonal) (M01) - References**

Variation at the NFATC2 Locus Increases the Risk of Thiazolinedione-Induced Edema in the Diabetes REduction Assessment with ramipril and rosiglitazone Medication (DREAM) Study. Bailey SD, et al. Diabetes Care, 2010 Jul 13. PMID 20628086. Gene-centric association signals for lipids and apolipoproteins identified via the HumanCVD BeadChip. Talmud PJ, et al. Am J Hum Genet, 2009 Nov. PMID 19913121. Sequential use of transcriptional profiling, expression quantitative trait mapping, and gene association implicates MMP20 in human kidney aging. Wheeler HE, et al. PLoS Genet, 2009 Oct. PMID 19834535. Aggregated low density lipoprotein induces tissue factor by inhibiting sphingomyelinase activity in human vascular smooth muscle cells. Camino-Lopez S, et al. J Thromb Haemost, 2009 Dec. PMID 19817993. Transcriptional regulation of neutral sphingomyelinase 2 gene expression of a human breast cancer cell line, MCF-7, induced by the anti-cancer drug, daunorubicin. Ito H, et al. Biochim Biophys Acta, 2009 Nov-Dec. PMID 19698806.