

SNAP29 Antibody (monoclonal) (M01)

Mouse monoclonal antibody raised against a full length recombinant SNAP29.

Catalog # AT3973a

Specification

SNAP29 Antibody (monoclonal) (M01) - Product Information

Application	WB, IF, E
Primary Accession	O95721
Other Accession	BC009715
Reactivity	Human
Host	mouse
Clonality	Monoclonal
Isotype	IgG1 kappa
Calculated MW	28970

SNAP29 Antibody (monoclonal) (M01) - Additional Information

Gene ID 9342

Other Names

Synaptosomal-associated protein 29, SNAP-29, Soluble 29 kDa NSF attachment protein, Vesicle-membrane fusion protein SNAP-29, SNAP29

Target/Specificity

SNAP29 (AAH09715, 1 a.a. ~ 258 a.a) full-length recombinant protein with GST tag. MW of the GST tag alone is 26 KDa.

Dilution

WB~~1:500~1000

IF~~1:50~200

E~~N/A

Format

Clear, colorless solution in phosphate buffered saline, pH 7.2 .

Storage

Store at -20°C or lower. Aliquot to avoid repeated freezing and thawing.

Precautions

SNAP29 Antibody (monoclonal) (M01) is for research use only and not for use in diagnostic or therapeutic procedures.

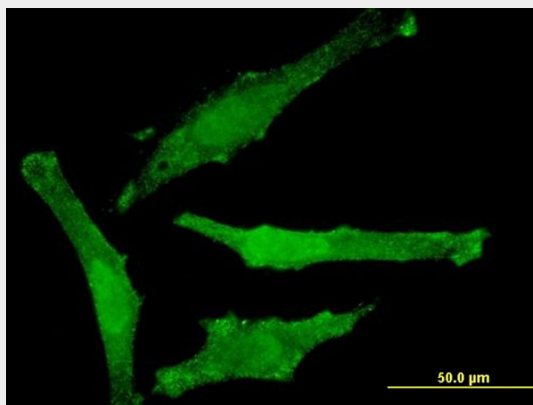
SNAP29 Antibody (monoclonal) (M01) - Protocols

Provided below are standard protocols that you may find useful for product applications.

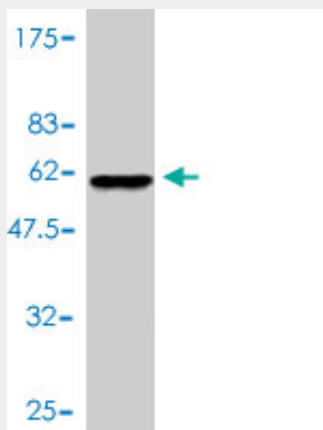
- [Western Blot](#)

- [Blocking Peptides](#)
- [Dot Blot](#)
- [Immunohistochemistry](#)
- [Immunofluorescence](#)
- [Immunoprecipitation](#)
- [Flow Cytometry](#)
- [Cell Culture](#)

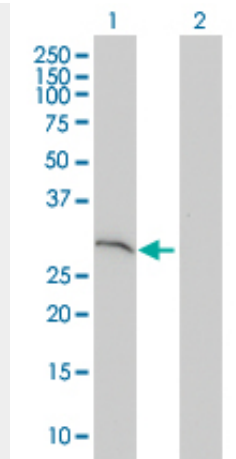
SNAP29 Antibody (monoclonal) (M01) - Images



Immunofluorescence of monoclonal antibody to SNAP29 on HeLa cell . [antibody concentration 10 ug/ml]



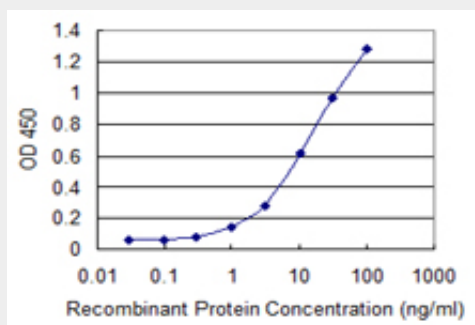
Antibody Reactive Against Recombinant Protein. Western Blot detection against Immunogen (54.12 KDa) .



Western Blot analysis of SNAP29 expression in transfected 293T cell line by SNAP29 monoclonal antibody (M01), clone 3E4-E6.

Lane 1: SNAP29 transfected lysate(28.38 KDa).

Lane 2: Non-transfected lysate.



Detection limit for recombinant GST tagged SNAP29 is 0.1 ng/ml as a capture antibody.

SNAP29 Antibody (monoclonal) (M01) - Background

This gene, a member of the SNAP25 gene family, encodes a protein involved in multiple membrane trafficking steps. Two other members of this gene family, SNAP23 and SNAP25, encode proteins that bind a syntaxin protein and mediate synaptic vesicle membrane docking and fusion to the plasma membrane. The protein encoded by this gene binds tightly to multiple syntaxins and is localized to intracellular membrane structures rather than to the plasma membrane. While the protein is mostly membrane-bound, a significant fraction of it is found free in the cytoplasm. Use of multiple polyadenylation sites has been noted for this gene.

SNAP29 Antibody (monoclonal) (M01) - References

1. SNARE protein expression and localization in human cytotoxic T lymphocytes. Pattu V, Qu B, Schwarz EC, Straubeta B, Weins L, Bhat SS, Halimani M, Marshall M, Rettig J, Hoth M. Eur J Immunol. 2011 Nov 25. doi: 10.1002/eji. 201141915.