

SORD Antibody (monoclonal) (M01)**Mouse monoclonal antibody raised against a partial recombinant SORD.****Catalog # AT3993a****Specification**

SORD Antibody (monoclonal) (M01) - Product Information

Application	WB, IHC, E
Primary Accession	Q00796
Other Accession	NM_003104
Reactivity	Human, Mouse, Rat
Host	mouse
Clonality	Monoclonal
Isotype	IgG1 Kappa
Calculated MW	38325

SORD Antibody (monoclonal) (M01) - Additional Information**Gene ID** 6652**Other Names**

Sorbitol dehydrogenase, L-iditol 2-dehydrogenase, SORD

Target/Specificity

SORD (NP_003095, 1 a.a. ~ 110 a.a) partial recombinant protein with GST tag. MW of the GST tag alone is 26 KDa.

Dilution

WB~~1:500~1000

IHC~~1:100~500

E~~N/A

Format

Clear, colorless solution in phosphate buffered saline, pH 7.2 .

Storage

Store at -20°C or lower. Aliquot to avoid repeated freezing and thawing.

Precautions

SORD Antibody (monoclonal) (M01) is for research use only and not for use in diagnostic or therapeutic procedures.

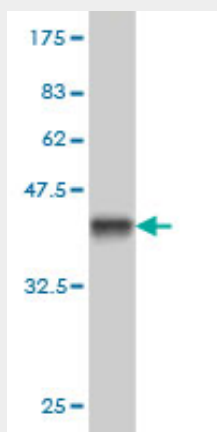
SORD Antibody (monoclonal) (M01) - Protocols

Provided below are standard protocols that you may find useful for product applications.

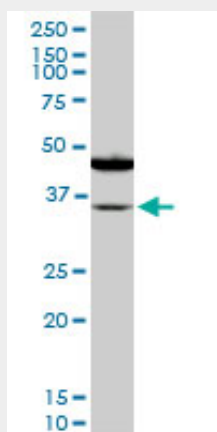
- [Western Blot](#)
- [Blocking Peptides](#)

- [Dot Blot](#)
- [Immunohistochemistry](#)
- [Immunofluorescence](#)
- [Immunoprecipitation](#)
- [Flow Cytometry](#)
- [Cell Culture](#)

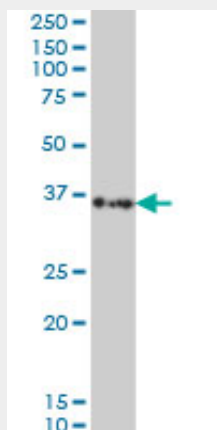
SORD Antibody (monoclonal) (M01) - Images



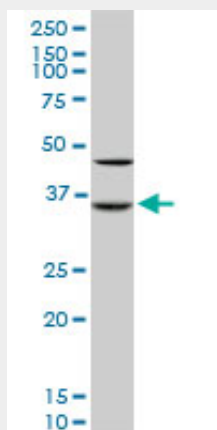
Antibody Reactive Against Recombinant Protein. Western Blot detection against Immunogen (37.84 KDa) .



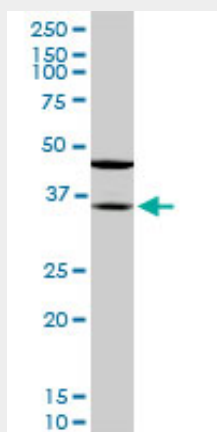
SORD monoclonal antibody (M01), clone 4D3. Western Blot analysis of SORD expression in PC-12 ((Cat # AT3993a)



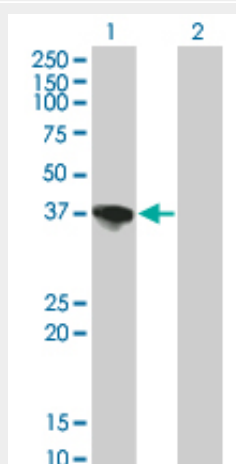
SORD monoclonal antibody (M01), clone 4D3 Western Blot analysis of SORD expression in Hela S3 NE ((Cat # AT3993a)



SORD monoclonal antibody (M01), clone 4D3. Western Blot analysis of SORD expression in Raw 264.7 ((Cat # AT3993a)



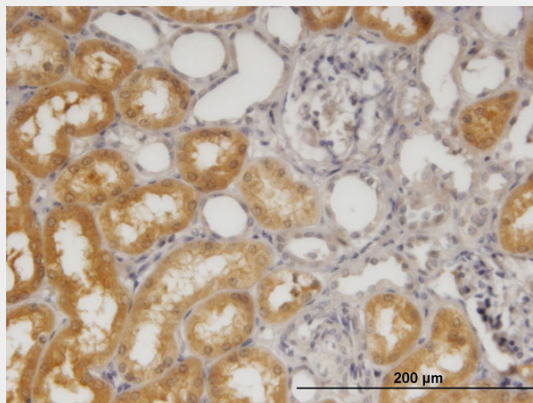
SORD monoclonal antibody (M01), clone 4D3. Western Blot analysis of SORD expression in NIH/3T3 ((Cat # AT3993a)



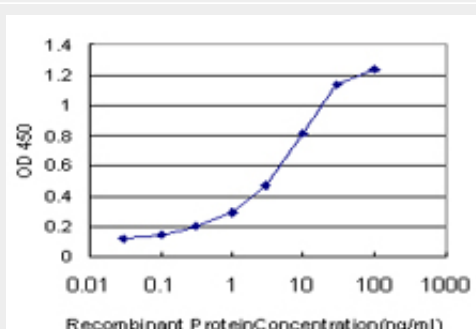
Western Blot analysis of SORD expression in transfected 293T cell line by SORD monoclonal antibody (M01), clone 4D3.

Lane 1: SORD transfected lysate(38.165 KDa).

Lane 2: Non-transfected lysate.



Immunoperoxidase of monoclonal antibody to SORD on formalin-fixed paraffin-embedded human kidney. [antibody concentration 1.2 ug/ml]



Detection limit for recombinant GST tagged SORD is approximately 0.1ng/ml as a capture antibody.

SORD Antibody (monoclonal) (M01) - Background

Sorbitol dehydrogenase (SORD; EC 1.1.1.14) catalyzes the interconversion of polyols and their corresponding ketoses, and together with aldose reductase (ALDR1; MIM 103880), makes up the sorbitol pathway that is believed to play an important role in the development of diabetic complications (summarized by Carr and Markham, 1995 [PubMed 8535074]). The first reaction of the pathway (also called the polyol pathway) is the reduction of glucose to sorbitol by ALDR1 with NADPH as the cofactor. SORD then oxidizes the sorbitol to fructose using NAD(+) cofactor.

SORD Antibody (monoclonal) (M01) - References

1.Sorbitol dehydrogenase expression is regulated by androgens in the human prostate.Szabo Z, Hamalainen J, Loikkanen I, Moilanen AM, Hirvikoski P, Vaisanen T, Paavonen TK, Vaarala MH.Oncol Rep. 2010 May;23(5):1233-9.