

**SOX30 Antibody (monoclonal) (M02)****Mouse monoclonal antibody raised against a partial recombinant SOX30.****Catalog # AT3998a****Specification**

---

**SOX30 Antibody (monoclonal) (M02) - Product Information**

Application	WB, IF
Primary Accession	<a href="#">O94993</a>
Other Accession	<a href="#">NM_178424</a>
Reactivity	Human
Host	mouse
Clonality	Monoclonal
Isotype	IgG2a Kappa
Calculated MW	81854

**SOX30 Antibody (monoclonal) (M02) - Additional Information****Gene ID** 11063**Other Names**

Transcription factor SOX-30, SOX30

**Target/Specificity**

SOX30 (NP\_848511, 644 a.a. ~ 753 a.a) partial recombinant protein with GST tag. MW of the GST tag alone is 26 KDa.

**Dilution**

WB~~1:500~1000

IF~~1:50~200

**Format**

Clear, colorless solution in phosphate buffered saline, pH 7.2 .

**Storage**

Store at -20°C or lower. Aliquot to avoid repeated freezing and thawing.

**Precautions**

SOX30 Antibody (monoclonal) (M02) is for research use only and not for use in diagnostic or therapeutic procedures.

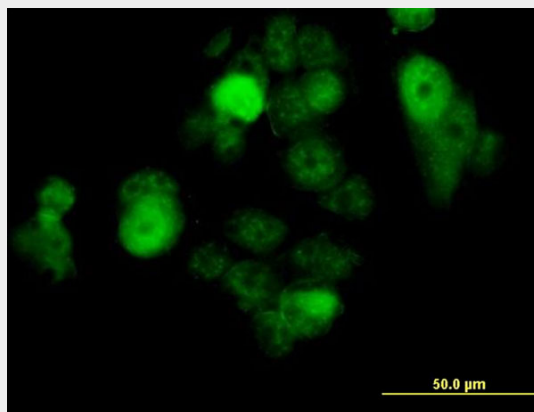
**SOX30 Antibody (monoclonal) (M02) - Protocols**

Provided below are standard protocols that you may find useful for product applications.

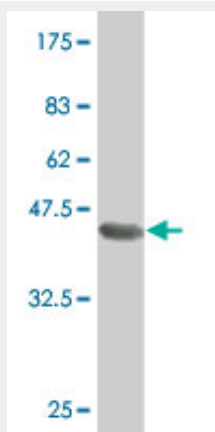
- [Western Blot](#)
- [Blocking Peptides](#)
- [Dot Blot](#)

- [Immunohistochemistry](#)
- [Immunofluorescence](#)
- [Immunoprecipitation](#)
- [Flow Cytometry](#)
- [Cell Culture](#)

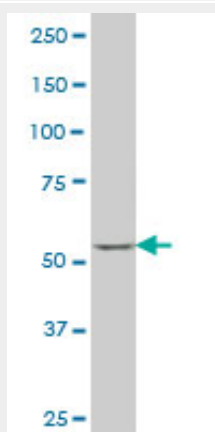
### SOX30 Antibody (monoclonal) (M02) - Images



Immunofluorescence of monoclonal antibody to SOX30 on MCF-7 cell . [antibody concentration 10 ug/ml]



Antibody Reactive Against Recombinant Protein. Western Blot detection against Immunogen (37.84 KDa) .



SOX30 monoclonal antibody (M02), clone 6H1 Western Blot analysis of SOX30 expression in

MCF-7 ( (Cat # AT3998a )

### **SOX30 Antibody (monoclonal) (M02) - Background**

This gene encodes a member of the SOX (SRY-related HMG-box) family of transcription factors involved in the regulation of embryonic development and in the determination of the cell fate. The encoded protein may act as a transcriptional regulator after forming a protein complex with other proteins. The protein may be involved in the differentiation of developing male germ cells. Two transcript variants encoding distinct isoforms have been identified for this gene.

### **SOX30 Antibody (monoclonal) (M02) - References**

Gene expression profiles of human trabecular meshwork cells induced by triamcinolone and dexamethasone. Fan BJ, et al. Invest Ophthalmol Vis Sci, 2008 May. PMID 18436822. Toward a confocal subcellular atlas of the human proteome. Barbe L, et al. Mol Cell Proteomics, 2008 Mar. PMID 18029348. Towards a proteome-scale map of the human protein-protein interaction network. Rual JF, et al. Nature, 2005 Oct 20. PMID 16189514. The status, quality, and expansion of the NIH full-length cDNA project: the Mammalian Gene Collection (MGC). Gerhard DS, et al. Genome Res, 2004 Oct. PMID 15489334. Origin and diversity of the SOX transcription factor gene family: genome-wide analysis in Fugu rubripes. Koopman P, et al. Gene, 2004 Mar 17. PMID 15019997.