

**SPG3A Antibody (monoclonal) (M10)****Mouse monoclonal antibody raised against a partial recombinant SPG3A.****Catalog # AT4020a****Specification**

---

**SPG3A Antibody (monoclonal) (M10) - Product Information**

Application	WB
Primary Accession	<a href="#">Q8WXF7</a>
Other Accession	<a href="#">NM_015915</a>
Reactivity	Human, Rat
Host	mouse
Clonality	Monoclonal
Isotype	IgG1 Kappa
Calculated MW	63544

**SPG3A Antibody (monoclonal) (M10) - Additional Information****Gene ID** 51062**Other Names**

Atlastin-1, 365-, Brain-specific GTP-binding protein, GTP-binding protein 3, GBP-3, hGBP3, Guanine nucleotide-binding protein 3, Spastic paraplegia 3 protein A, ATL1, GBP3, SPG3A

**Target/Specificity**

SPG3A (NP\_056999, 1 a.a. ~ 100 a.a) partial recombinant protein with GST tag. MW of the GST tag alone is 26 KDa.

**Dilution**

WB~~1:500~1000

**Format**

Clear, colorless solution in phosphate buffered saline, pH 7.2 .

**Storage**

Store at -20°C or lower. Aliquot to avoid repeated freezing and thawing.

**Precautions**

SPG3A Antibody (monoclonal) (M10) is for research use only and not for use in diagnostic or therapeutic procedures.

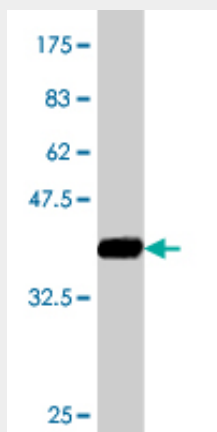
**SPG3A Antibody (monoclonal) (M10) - Protocols**

Provided below are standard protocols that you may find useful for product applications.

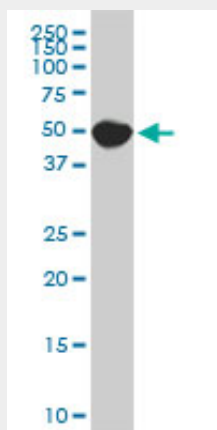
- [Western Blot](#)
- [Blocking Peptides](#)
- [Dot Blot](#)

- [Immunohistochemistry](#)
- [Immunofluorescence](#)
- [Immunoprecipitation](#)
- [Flow Cytometry](#)
- [Cell Culture](#)

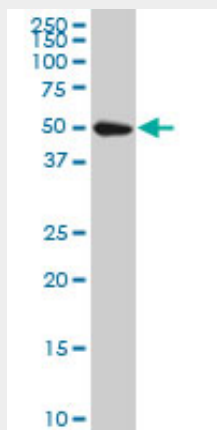
### SPG3A Antibody (monoclonal) (M10) - Images



Antibody Reactive Against Recombinant Protein. Western Blot detection against Immunogen (36.74 kDa) .



SPG3A monoclonal antibody (M10), clone 1B11. Western Blot analysis of SPG3A expression in PC-12 ( (Cat # AT4020a )



SPG3A monoclonal antibody (M10), clone 1B11. Western Blot analysis of SPG3A expression in IMR-32 (Cat # AT4020a)

### **SPG3A Antibody (monoclonal) (M10) - Background**

The protein encoded by this gene is a GTPase and a Golgi body transmembrane protein. The encoded protein can form a homotetramer and has been shown to interact with spastin and with mitogen-activated protein kinase kinase kinase 4. This protein may be involved in axonal maintenance as evidenced by the fact that defects in this gene are a cause of spastic paraplegia type 3. Three transcript variants encoding two different isoforms have been found for this gene.

### **SPG3A Antibody (monoclonal) (M10) - References**

Hereditary spastic paraplegia proteins REEP1, spastin, and atlastin-1 coordinate microtubule interactions with the tubular ER network. Park SH, et al. J Clin Invest, 2010 Apr 1. PMID 20200447. Association of genetic variants with hemorrhagic stroke in Japanese individuals. Yoshida T, et al. Int J Mol Med, 2010 Apr. PMID 20198315. Common genetic variation and performance on standardized cognitive tests. Cirulli ET, et al. Eur J Hum Genet, 2010 Jul. PMID 20125193. Assessment of a polymorphism of SDK1 with hypertension in Japanese Individuals. Oguri M, et al. Am J Hypertens, 2010 Jan. PMID 19851296. Complex phenotype in an Italian family with a novel mutation in SPG3A. de Leva MF, et al. J Neurol, 2010 Mar. PMID 19768483.