

SPRY2 Antibody (monoclonal) (M01)**Mouse monoclonal antibody raised against a full length recombinant SPRY2.****Catalog # AT4032a****Specification**

SPRY2 Antibody (monoclonal) (M01) - Product Information

Application	WB, IHC, IF, E
Primary Accession	O43597
Other Accession	BC015745
Reactivity	Human
Host	Mouse
Clonality	Monoclonal
Isotype	IgG1 Kappa
Calculated MW	34688

SPRY2 Antibody (monoclonal) (M01) - Additional Information**Gene ID** 10253**Other Names**

Protein sprouty homolog 2, Spry-2, SPRY2

Target/Specificity

SPRY2 (AAH15745.1, 1 a.a. ~ 315 a.a) full-length recombinant protein with GST tag. MW of the GST tag alone is 26 KDa.

Dilution

WB~~1:500~1000

IHC~~1:100~500

IF~~1:50~200

E~~N/A

Format

Clear, colorless solution in phosphate buffered saline, pH 7.2 .

Storage

Store at -20°C or lower. Aliquot to avoid repeated freezing and thawing.

Precautions

SPRY2 Antibody (monoclonal) (M01) is for research use only and not for use in diagnostic or therapeutic procedures.

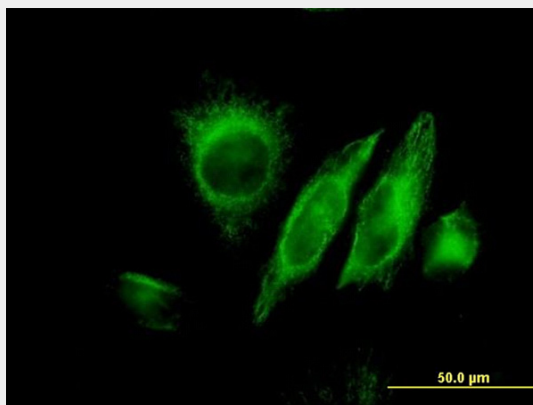
SPRY2 Antibody (monoclonal) (M01) - Protocols

Provided below are standard protocols that you may find useful for product applications.

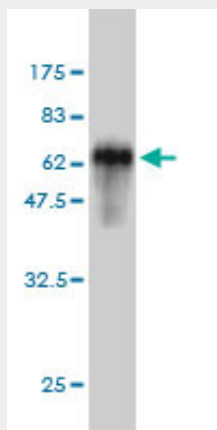
- [Western Blot](#)

- [Blocking Peptides](#)
- [Dot Blot](#)
- [Immunohistochemistry](#)
- [Immunofluorescence](#)
- [Immunoprecipitation](#)
- [Flow Cytometry](#)
- [Cell Culture](#)

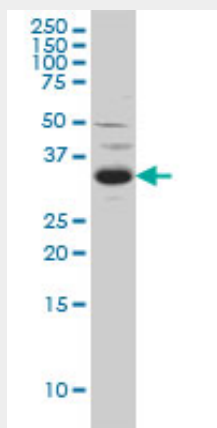
SPRY2 Antibody (monoclonal) (M01) - Images



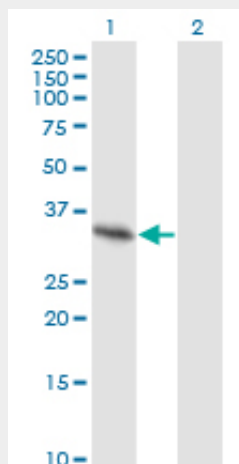
Immunofluorescence of monoclonal antibody to SPRY2 on HeLa cell. [antibody concentration 25 ug/ml]



Antibody Reactive Against Recombinant Protein. Western Blot detection against Immunogen (60.39 KDa) .

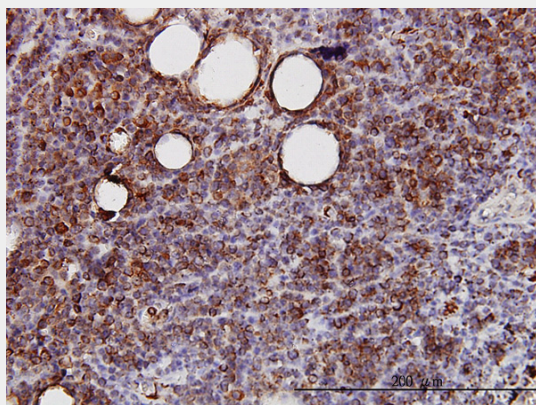


SPRY2 monoclonal antibody (M01), clone 1E10 Western Blot analysis of SPRY2 expression in C32 (Cat # AT4032a)

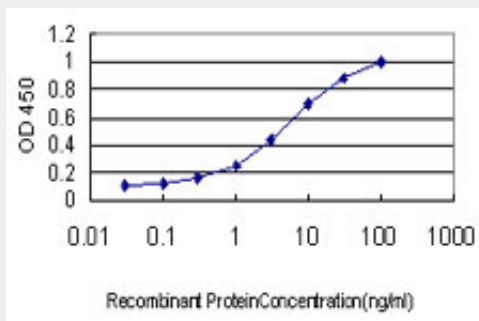


Western Blot analysis of SPRY2 expression in transfected 293T cell line by SPRY2 monoclonal antibody (M01), clone 1E10.

Lane 1: SPRY2 transfected lysate(34.7 KDa).
Lane 2: Non-transfected lysate.



Immunoperoxidase of monoclonal antibody to SPRY2 on formalin-fixed paraffin-embedded human lymphoma. [antibody concentration 3 ug/ml]



Detection limit for recombinant GST tagged SPRY2 is approximately 0.1ng/ml as a capture antibody.

SPRY2 Antibody (monoclonal) (M01) - Background

This gene encodes a protein belonging to the sprouty family. The encoded protein contains a

carboxyl-terminal cysteine-rich domain essential for the inhibitory activity on receptor tyrosine kinase signaling proteins and is required for growth factor stimulated translocation of the protein to membrane ruffles. In primary dermal endothelial cells this gene is transiently upregulated in response to fibroblast growth factor two. This protein is indirectly involved in the non-cell autonomous inhibitory effect on fibroblast growth factor two signaling. The protein interacts with Cas-Br-M (murine) ectropic retroviral transforming sequence, and can function as a bimodal regulator of epidermal growth factor receptor/mitogen-activated protein kinase signaling. This protein may play a role in alveoli branching during lung development as shown by a similar mouse protein.

SPRY2 Antibody (monoclonal) (M01) - References

1.SPROUTY2 is a β -catenin and FOXO3a target gene indicative of poor prognosis in colon cancer.Ordenez-Moran P, Irmisch A, Barbachano A, Chicote I, Tenbaum S, Landolfi S, Tabernero J, Huelsken J, Munoz A, Palmer HG. *Oncogene*. 2013 Apr 29. doi: 10.1038/onc.2013.140.2. Initial Report on Differential Expression of Sprouty Proteins 1 and 2 in Human Epithelial Ovarian Cancer Cell Lines. Moghaddam SM, Amini A, Wei AQ, Pourgholami MH, Morris DL. *J Oncol*. 2012;2012:373826. doi: 10.1155/2012/373826. Epub 2012 Nov 29. 3.SPROUTY-2 and E-cadherin regulate reciprocally and dictate colon cancer cell tumorigenicity. Barbachano A, Ordenez-Moran P, Garcia JM, Sanchez A, Pereira F, Larriba MJ, Martinez N, Hernandez J, Landolfi S, Bonilla F, Palmer HG, Rojas JM, Munoz A. *Oncogene*. 2010 Jun 14. [Epub ahead of print]