

**SSH2 Antibody (monoclonal) (M07)****Mouse monoclonal antibody raised against a partial recombinant SSH2.****Catalog # AT4045a****Specification**

---

**SSH2 Antibody (monoclonal) (M07) - Product Information**

Application	E
Primary Accession	<a href="#">Q76I76</a>
Other Accession	<a href="#">NM_033389</a>
Reactivity	Human
Host	mouse
Clonality	Monoclonal
Isotype	IgG2a Kappa
Calculated MW	158216

**SSH2 Antibody (monoclonal) (M07) - Additional Information****Gene ID** 85464**Other Names**

Protein phosphatase Slingshot homolog 2, SSH-like protein 2, SSH-2L, hSSH-2L, SSH2, KIAA1725, SSH2L

**Target/Specificity**

SSH2 (NP\_203747, 20 a.a. ~ 117 a.a) partial recombinant protein with GST tag. MW of the GST tag alone is 26 KDa.

**Format**

Clear, colorless solution in phosphate buffered saline, pH 7.2 .

**Storage**

Store at -20°C or lower. Aliquot to avoid repeated freezing and thawing.

**Precautions**

SSH2 Antibody (monoclonal) (M07) is for research use only and not for use in diagnostic or therapeutic procedures.

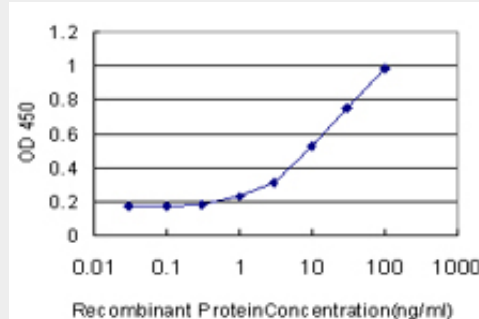
**SSH2 Antibody (monoclonal) (M07) - Protocols**

Provided below are standard protocols that you may find useful for product applications.

- [Western Blot](#)
- [Blocking Peptides](#)
- [Dot Blot](#)
- [Immunohistochemistry](#)
- [Immunofluorescence](#)
- [Immunoprecipitation](#)

- [Flow Cytometry](#)
- [Cell Culture](#)

### SSH2 Antibody (monoclonal) (M07) - Images



Detection limit for recombinant GST tagged SSH2 is approximately 1ng/ml as a capture antibody.

### SSH2 Antibody (monoclonal) (M07) - Background

The ADF (actin-depolymerizing factor)/cofilin family (see MIM 601442) is composed of stimulus-responsive mediators of actin dynamics. ADF/cofilin proteins are inactivated by kinases such as LIM domain kinase-1 (LIMK1; MIM 601329). The SSH family appears to play a role in actin dynamics by reactivating ADF/cofilin proteins in vivo (Niwa et al., 2002 [PubMed 11832213]).

### SSH2 Antibody (monoclonal) (M07) - References

Mutational analysis of mononucleotide repeats in dual specificity tyrosine phosphatase genes in gastric and colon carcinomas with microsatellite instability. Song SY, et al. APMIS, 2010 May. PMID 20477815. The slingshot family of phosphatases mediates Rac1 regulation of cofilin phosphorylation, laminin-332 organization, and motility behavior of keratinocytes. Kligys K, et al. J Biol Chem, 2007 Nov 2. PMID 17848544. Global, in vivo, and site-specific phosphorylation dynamics in signaling networks. Olsen JV, et al. Cell, 2006 Nov 3. PMID 17081983. Interplay between components of a novel LIM kinase-slingshot phosphatase complex regulates cofilin. Soosairajah J, et al. EMBO J, 2005 Feb 9. PMID 15660133. The status, quality, and expansion of the NIH full-length cDNA project: the Mammalian Gene Collection (MGC). Gerhard DS, et al. Genome Res, 2004 Oct. PMID 15489334.