

**SSH3 Antibody (monoclonal) (M01)****Mouse monoclonal antibody raised against a partial recombinant SSH3.****Catalog # AT4046a****Specification**

---

**SSH3 Antibody (monoclonal) (M01) - Product Information**

|                   |                           |
|-------------------|---------------------------|
| Application       | WB, IHC, IF, IP           |
| Primary Accession | <a href="#">Q8TE77</a>    |
| Other Accession   | <a href="#">NM_017857</a> |
| Reactivity        | Human                     |
| Host              | mouse                     |
| Clonality         | Monoclonal                |
| Isotype           | IgG2a Kappa               |
| Calculated MW     | 72996                     |

**SSH3 Antibody (monoclonal) (M01) - Additional Information****Gene ID** 54961**Other Names**

Protein phosphatase Slingshot homolog 3, SSH-like protein 3, SSH-3L, hSSH-3L, SSH3, SSH3L

**Target/Specificity**

SSH3 (NP\_060327, 293 a.a. ~ 391 a.a) partial recombinant protein with GST tag. MW of the GST tag alone is 26 KDa.

**Dilution**

WB~~1:500~1000

IHC~~1:100~500

IF~~1:50~200

IP~~N/A

**Format**

Clear, colorless solution in phosphate buffered saline, pH 7.2 .

**Storage**

Store at -20°C or lower. Aliquot to avoid repeated freezing and thawing.

**Precautions**

SSH3 Antibody (monoclonal) (M01) is for research use only and not for use in diagnostic or therapeutic procedures.

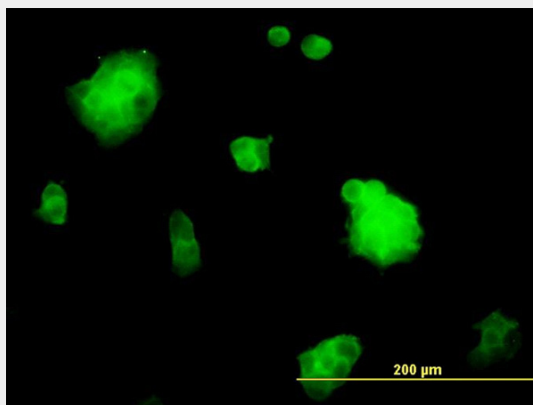
**SSH3 Antibody (monoclonal) (M01) - Protocols**

Provided below are standard protocols that you may find useful for product applications.

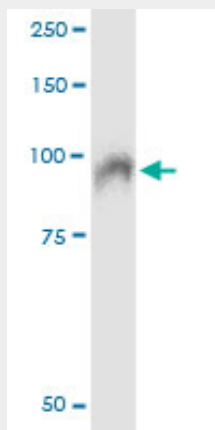
- [Western Blot](#)

- [Blocking Peptides](#)
- [Dot Blot](#)
- [Immunohistochemistry](#)
- [Immunofluorescence](#)
- [Immunoprecipitation](#)
- [Flow Cytometry](#)
- [Cell Culture](#)

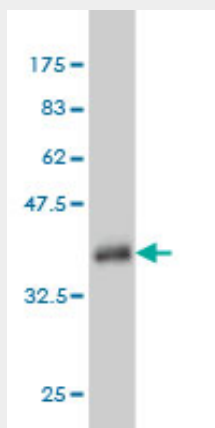
### SSH3 Antibody (monoclonal) (M01) - Images



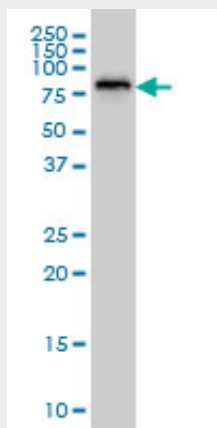
Immunofluorescence of monoclonal antibody to SSH3 on A-431 cell. [antibody concentration 10 ug/ml]



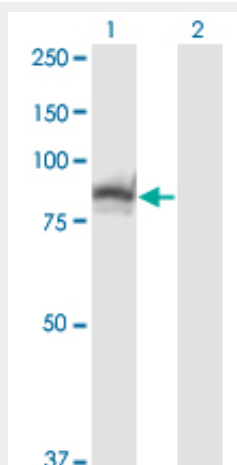
Immunoprecipitation of SSH3 transfected lysate using anti-SSH3 monoclonal antibody and Protein A Magnetic Bead ([U0007](#)), and immunoblotted with SSH3 monoclonal antibody.



Antibody Reactive Against Recombinant Protein. Western Blot detection against Immunogen (36.63 KDa) .



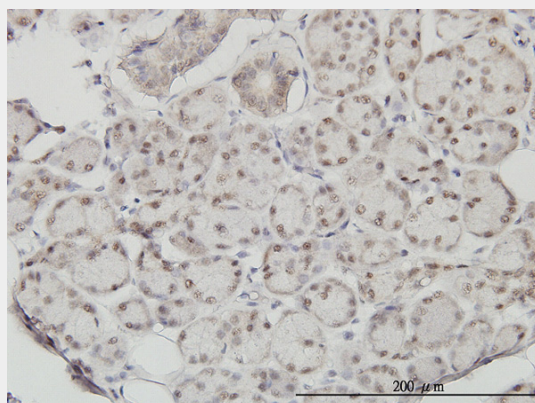
SSH3 monoclonal antibody (M01), clone 6F9 Western Blot analysis of SSH3 expression in A-431 (Cat # AT4046a )



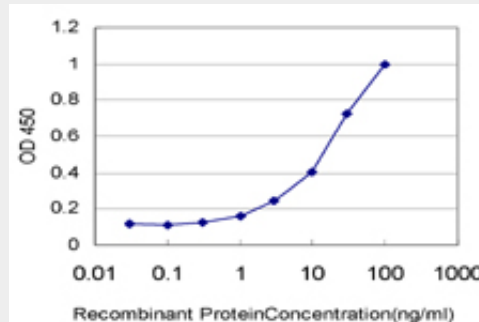
Western Blot analysis of SSH3 expression in transfected 293T cell line by SSH3 monoclonal antibody (M01), clone 6F9.

Lane 1: SSH3 transfected lysate(73 KDa).

Lane 2: Non-transfected lysate.



Immunoperoxidase of monoclonal antibody to SSH3 on formalin-fixed paraffin-embedded human salivary gland. [antibody concentration 1 ~ 10 ug/ml]



Detection limit for recombinant GST tagged SSH3 is approximately 0.3ng/ml as a capture antibody.

### SSH3 Antibody (monoclonal) (M01) - Background

The ADF (actin-depolymerizing factor)/cofilin family (see MIM 601442) is composed of stimulus-responsive mediators of actin dynamics. ADF/cofilin proteins are inactivated by kinases such as LIM domain kinase-1 (LIMK1; MIM 601329). The SSH family appears to play a role in actin dynamics by reactivating ADF/cofilin proteins in vivo (Niwa et al., 2002 [PubMed 11832213]).

### SSH3 Antibody (monoclonal) (M01) - References

Slingshot-3 dephosphorylates ADF/cofilin but is dispensable for mouse development. Kousaka K, et al. *Genesis*, 2008 May. PMID 18442045. The slingshot family of phosphatases mediates Rac1 regulation of cofilin phosphorylation, laminin-332 organization, and motility behavior of keratinocytes. Kligys K, et al. *J Biol Chem*, 2007 Nov 2. PMID 17848544. A probability-based approach for high-throughput protein phosphorylation analysis and site localization. Beausoleil SA, et al. *Nat Biotechnol*, 2006 Oct. PMID 16964243. Diversification of transcriptional modulation: large-scale identification and characterization of putative alternative promoters of human genes. Kimura K, et al. *Genome Res*, 2006 Jan. PMID 16344560. Interplay between components of a novel LIM kinase-slingshot phosphatase complex regulates cofilin. Soosairajah J, et al. *EMBO J*, 2005 Feb 9. PMID 15660133.