

STAM2 Antibody (monoclonal) (M01)**Mouse monoclonal antibody raised against a partial recombinant STAM2.****Catalog # AT4057a****Specification**

STAM2 Antibody (monoclonal) (M01) - Product Information

| | |
|-------------------|---------------------------|
| Application | WB, IP, E |
| Primary Accession | O75886 |
| Other Accession | NM_005843 |
| Reactivity | Human |
| Host | mouse |
| Clonality | Monoclonal |
| Isotype | IgG2a Kappa |
| Calculated MW | 58164 |

STAM2 Antibody (monoclonal) (M01) - Additional Information**Gene ID** 10254**Other Names**

Signal transducing adapter molecule 2, STAM-2, Hrs-binding protein, STAM2, HBP

Target/Specificity

STAM2 (NP_005834, 416 a.a. ~ 525 a.a) partial recombinant protein with GST tag. MW of the GST tag alone is 26 KDa.

Dilution

WB~~1:500~1000

IP~~N/A

E~~N/A

Format

Clear, colorless solution in phosphate buffered saline, pH 7.2 .

Storage

Store at -20°C or lower. Aliquot to avoid repeated freezing and thawing.

Precautions

STAM2 Antibody (monoclonal) (M01) is for research use only and not for use in diagnostic or therapeutic procedures.

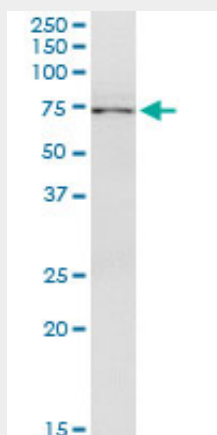
STAM2 Antibody (monoclonal) (M01) - Protocols

Provided below are standard protocols that you may find useful for product applications.

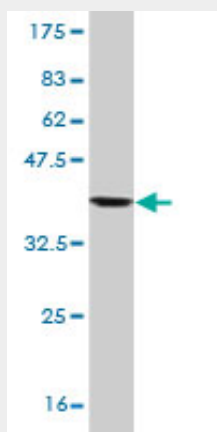
- [Western Blot](#)
- [Blocking Peptides](#)

- [Dot Blot](#)
- [Immunohistochemistry](#)
- [Immunofluorescence](#)
- [Immunoprecipitation](#)
- [Flow Cytometry](#)
- [Cell Culture](#)

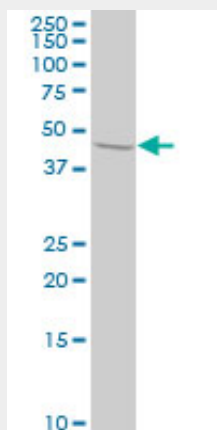
STAM2 Antibody (monoclonal) (M01) - Images



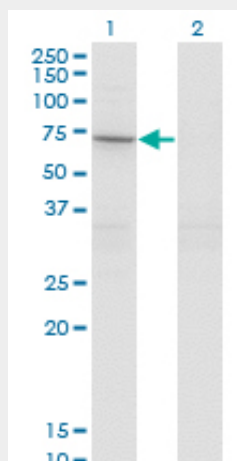
Immunoprecipitation of STAM2 transfected lysate using anti-STAM2 monoclonal antibody and Protein A Magnetic Bead ([U0007](#)), and immunoblotted with STAM2 monoclonal antibody.



Antibody Reactive Against Recombinant Protein. Western Blot detection against Immunogen (37.84 KDa) .



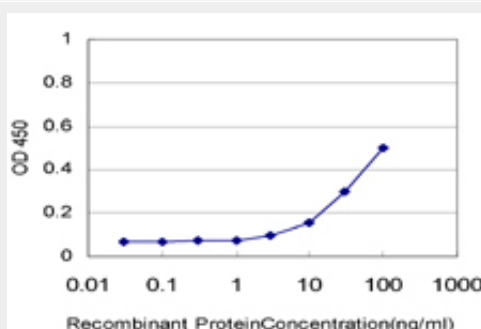
STAM2 monoclonal antibody (M01), clone 1A10 Western Blot analysis of STAM2 expression in HeLa (Cat # AT4057a)



Western Blot analysis of STAM2 expression in transfected 293T cell line by STAM2 monoclonal antibody (M01), clone 1A10.

Lane 1: STAM2 transfected lysate (Predicted MW: 58.2 KDa).

Lane 2: Non-transfected lysate.



Detection limit for recombinant GST tagged STAM2 is approximately 10ng/ml as a capture antibody.

STAM2 Antibody (monoclonal) (M01) - Background

The protein encoded by this gene is closely related to STAM, an adaptor protein involved in the downstream signaling of cytokine receptors, both of which contain a SH3 domain and the immunoreceptor tyrosine-based activation motif (ITAM). Similar to STAM, this protein acts downstream of JAK kinases, and is phosphorylated in response to cytokine stimulation. This protein and STAM thus are thought to exhibit compensatory effects on the signaling pathway downstream of JAK kinases upon cytokine stimulation.

STAM2 Antibody (monoclonal) (M01) - References

PTP1B targets the endosomal sorting machinery: dephosphorylation of regulatory sites on the endosomal sorting complex required for transport component STAM2. Stuble M, et al. J Biol Chem, 2010 Jul 30. PMID 20504764. An empirical framework for binary interactome mapping. Venkatesan K, et al. Nat Methods, 2009 Jan. PMID 19060904. STAM adaptor proteins interact with COPII complexes and function in ER-to-Golgi trafficking. Rismanchi N, et al. Traffic, 2009 Feb. PMID 19054391. E3-independent monoubiquitination of ubiquitin-binding proteins. Hoeller D, et al. Mol Cell, 2007 Jun 22. PMID 17588522. Rin1 interacts with signal-transducing adaptor molecule (STAM)

and mediates epidermal growth factor receptor trafficking and degradation. Kong C, et al. J Biol Chem, 2007 May 18. PMID 17403676.