

**STAT4 Antibody (monoclonal) (M01)****Mouse monoclonal antibody raised against a full length recombinant STAT4.****Catalog # AT4063a****Specification**

---

**STAT4 Antibody (monoclonal) (M01) - Product Information**

Application	WB, IHC, IF, IP, E
Primary Accession	<a href="#">Q14765</a>
Other Accession	<a href="#">BC031212</a>
Reactivity	Human
Host	mouse
Clonality	Monoclonal
Isotype	IgG1 Kappa
Calculated MW	85941

**STAT4 Antibody (monoclonal) (M01) - Additional Information****Gene ID** 6775**Other Names**

Signal transducer and activator of transcription 4, STAT4

**Target/Specificity**

STAT4 (AAH31212, 1 a.a. ~ 748 a.a) full-length recombinant protein with GST tag. MW of the GST tag alone is 26 KDa.

**Dilution**

WB~~1:500~1000

IHC~~1:100~500

IF~~1:50~200

IP~~N/A

E~~N/A

**Format**

Clear, colorless solution in phosphate buffered saline, pH 7.2 .

**Storage**

Store at -20°C or lower. Aliquot to avoid repeated freezing and thawing.

**Precautions**

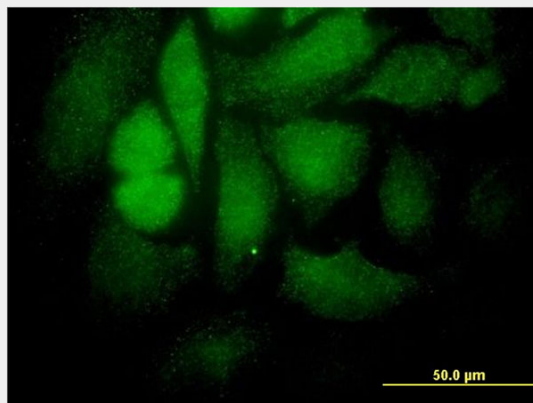
STAT4 Antibody (monoclonal) (M01) is for research use only and not for use in diagnostic or therapeutic procedures.

**STAT4 Antibody (monoclonal) (M01) - Protocols**

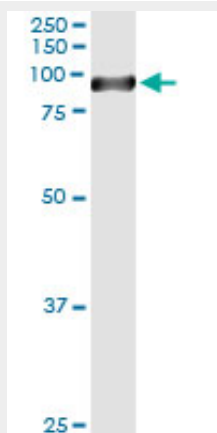
Provided below are standard protocols that you may find useful for product applications.

- [Western Blot](#)
- [Blocking Peptides](#)
- [Dot Blot](#)
- [Immunohistochemistry](#)
- [Immunofluorescence](#)
- [Immunoprecipitation](#)
- [Flow Cytometry](#)
- [Cell Culture](#)

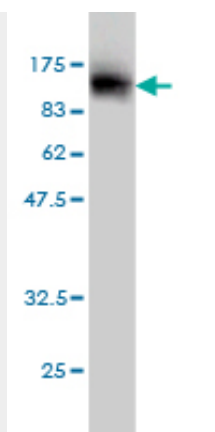
#### STAT4 Antibody (monoclonal) (M01) - Images



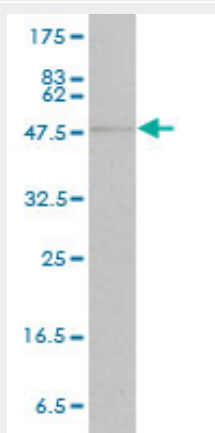
Immunofluorescence of monoclonal antibody to STAT4 on HeLa cell. [antibody concentration 10 ug/ml]



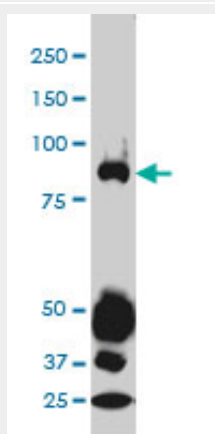
Immunoprecipitation of STAT4 transfected lysate using anti-STAT4 monoclonal antibody and Protein A Magnetic Bead ([U0007](#)), and immunoblotted with STAT4 MaxPab rabbit polyclonal antibody.



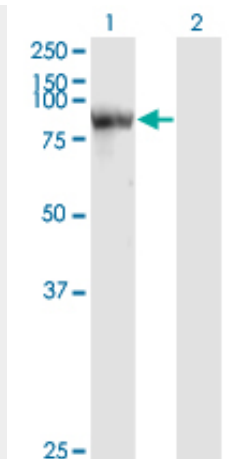
Antibody Reactive Against Recombinant Protein. Western Blot detection against Immunogen (108.02 KDa) .



STAT4 monoclonal antibody (M01), clone 1C2-1C12. Western Blot analysis of STAT4 expression in human liver.



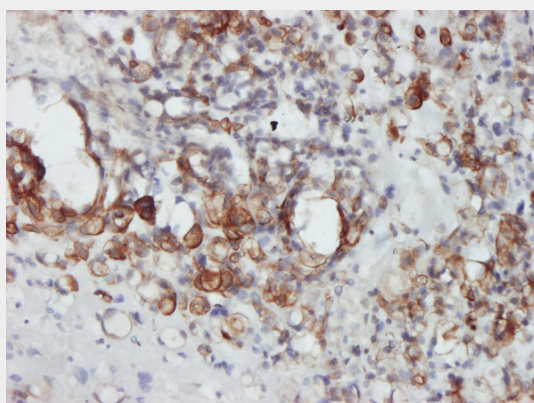
STAT4 monoclonal antibody (M01), clone 1C2-1C12 Western Blot analysis of STAT4 expression in A-549 ( Cat # AT4063a )



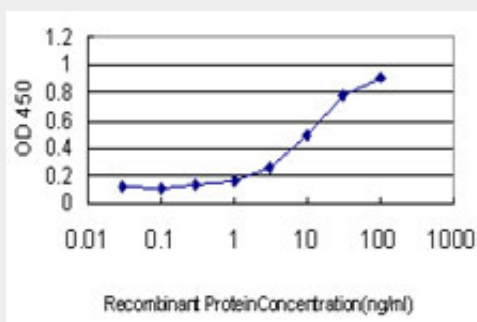
Western Blot analysis of STAT4 expression in transfected 293T cell line by STAT4 monoclonal antibody (M01), clone 1C2-1C12.

Lane 1: STAT4 transfected lysate(85.9 KDa).

Lane 2: Non-transfected lysate.



Immunoperoxidase of monoclonal antibody to STAT4 on formalin-fixed paraffin-embedded human ovary, clear cell carcinoma tissue. [antibody concentration 1 ~ 10 ug/ml]



Detection limit for recombinant GST tagged STAT4 is approximately 0.3ng/ml as a capture antibody.

### **STAT4 Antibody (monoclonal) (M01) - Background**

The protein encoded by this gene is a member of the STAT family of transcription factors. In response to cytokines and growth factors, STAT family members are phosphorylated by the receptor associated kinases, and then form homo- or heterodimers that translocate to the cell nucleus where they act as transcription activators. This protein is essential for mediating responses

to IL12 in lymphocytes, and regulating the differentiation of T helper cells.

#### **STAT4 Antibody (monoclonal) (M01) - References**

STAT4 is a confirmed genetic risk factor for Sjögren's syndrome and could be involved in type 1 interferon pathway signaling. Gestermann N, et al. Genes Immun, 2010 Jul. PMID 20535138. Interleukin-9 polymorphism in infants with respiratory syncytial virus infection: an opposite effect in boys and girls. Schuurhof A, et al. Pediatr Pulmonol, 2010 Jun. PMID 20503287. Investigation of potential non-HLA rheumatoid arthritis susceptibility loci in a European cohort increases the evidence for nine markers. Plant D, et al. Ann Rheum Dis, 2010 Aug. PMID 20498205. Genetic risk factors in lupus nephritis and IgA nephropathy--no support of an overlap. Vuong MT, et al. PLoS One, 2010 May 10. PMID 20479942. Evidence for STAT4 as a common autoimmune gene: rs7574865 is associated with colonic Crohn's disease and early disease onset. Glas J, et al. PLoS One, 2010 Apr 29. PMID 20454450.