

STAU2 Antibody (monoclonal) (M03)**Mouse monoclonal antibody raised against a partial recombinant STAU2.****Catalog # AT4070a****Specification**

STAU2 Antibody (monoclonal) (M03) - Product Information

Application	WB, E
Primary Accession	O9NUL3
Other Accession	NM_014393
Reactivity	Human
Host	mouse
Clonality	Monoclonal
Isotype	IgG1 Kappa
Calculated MW	62608

STAU2 Antibody (monoclonal) (M03) - Additional Information**Gene ID** 27067**Other Names**

Double-stranded RNA-binding protein Staufen homolog 2, STAU2

Target/Specificity

STAU2 (NP_055208, 2 a.a. ~ 90 a.a) partial recombinant protein with GST tag. MW of the GST tag alone is 26 KDa.

Dilution

WB~~1:500~1000

Format

Clear, colorless solution in phosphate buffered saline, pH 7.2 .

Storage

Store at -20°C or lower. Aliquot to avoid repeated freezing and thawing.

Precautions

STAU2 Antibody (monoclonal) (M03) is for research use only and not for use in diagnostic or therapeutic procedures.

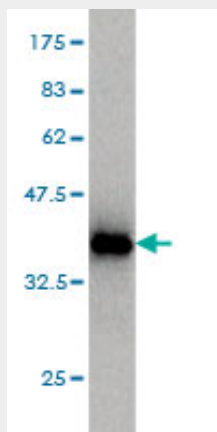
STAU2 Antibody (monoclonal) (M03) - Protocols

Provided below are standard protocols that you may find useful for product applications.

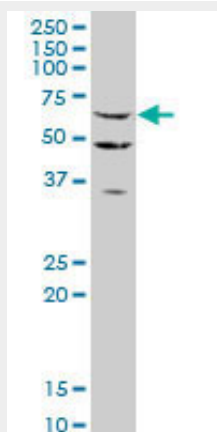
- [Western Blot](#)
- [Blocking Peptides](#)
- [Dot Blot](#)
- [Immunohistochemistry](#)

- [Immunofluorescence](#)
- [Immunoprecipitation](#)
- [Flow Cytometry](#)
- [Cell Culture](#)

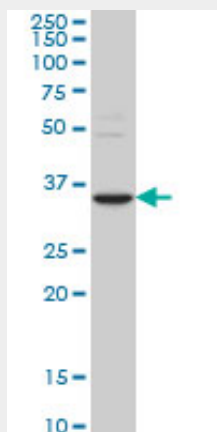
STAU2 Antibody (monoclonal) (M03) - Images



Antibody Reactive Against Recombinant Protein. Western Blot detection against Immunogen (35.53 KDa) .

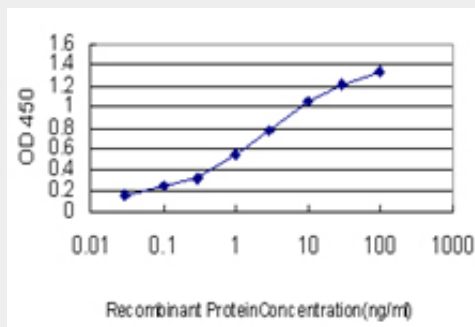


STAU2 monoclonal antibody (M03), clone 6F9. Western Blot analysis of STAU2 expression in HL-60 (Cat # AT4070a)



STAU2 monoclonal antibody (M03), clone 6F9 Western Blot analysis of STAU2 expression in

MES-SA/Dx5 ((Cat # AT4070a)



Detection limit for recombinant GST tagged STAU2 is approximately 0.1ng/ml as a capture antibody.

STAU2 Antibody (monoclonal) (M03) - Background

Staufen homolog 2 is a member of the family of double-stranded RNA (dsRNA)-binding proteins involved in the transport and/or localization of mRNAs to different subcellular compartments and/or organelles. These proteins are characterized by the presence of multiple dsRNA-binding domains which are required to bind RNAs having double-stranded secondary structures. Staufen homolog 2 shares 48.5% and 59.9% similarity with drosophila and human staufen, respectively. The exact function of Staufen homolog 2 is not known, but since it contains 3 copies of conserved dsRNA binding domain, it could be involved in double-stranded RNA binding events. Several transcript variants encoding different isoforms have been found for this gene.

STAU2 Antibody (monoclonal) (M03) - References

A genome-wide approach identifies distinct but overlapping subsets of cellular mRNAs associated with Staufen1- and Staufen2-containing ribonucleoprotein complexes. Furic L, et al. RNA, 2008 Feb. PMID 18094122. A probability-based approach for high-throughput protein phosphorylation analysis and site localization. Beausoleil SA, et al. Nat Biotechnol, 2006 Oct. PMID 16964243. A human protein-protein interaction network: a resource for annotating the proteome. Stelzl U, et al. Cell, 2005 Sep 23. PMID 16169070. The status, quality, and expansion of the NIH full-length cDNA project: the Mammalian Gene Collection (MGC). Gerhard DS, et al. Genome Res, 2004 Oct. PMID 15489334. Identification of Staufen in the human immunodeficiency virus type 1 Gag ribonucleoprotein complex and a role in generating infectious viral particles. Chatel-Chaix L, et al. Mol Cell Biol, 2004 Apr. PMID 15024055.