

STC1 Antibody (monoclonal) (M01)**Mouse monoclonal antibody raised against a partial recombinant STC1.****Catalog # AT4072a****Specification**

STC1 Antibody (monoclonal) (M01) - Product Information

Application	WB
Primary Accession	P52823
Other Accession	BC029044
Reactivity	Human
Host	mouse
Clonality	Monoclonal
Isotype	IgG2a Kappa
Calculated MW	27621

STC1 Antibody (monoclonal) (M01) - Additional Information**Gene ID** 6781**Other Names**

Stanniocalcin-1, STC-1, STC1, STC

Target/Specificity

STC1 (AAH29044, 141 a.a. ~ 247 a.a) partial recombinant protein with GST tag. MW of the GST tag alone is 26 KDa.

Dilution

WB~~1:500~1000

Format

Clear, colorless solution in phosphate buffered saline, pH 7.2 .

Storage

Store at -20°C or lower. Aliquot to avoid repeated freezing and thawing.

Precautions

STC1 Antibody (monoclonal) (M01) is for research use only and not for use in diagnostic or therapeutic procedures.

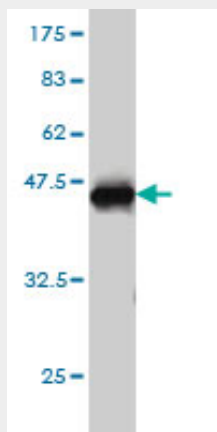
STC1 Antibody (monoclonal) (M01) - Protocols

Provided below are standard protocols that you may find useful for product applications.

- [Western Blot](#)
- [Blocking Peptides](#)
- [Dot Blot](#)
- [Immunohistochemistry](#)

- [Immunofluorescence](#)
- [Immunoprecipitation](#)
- [Flow Cytometry](#)
- [Cell Culture](#)

STC1 Antibody (monoclonal) (M01) - Images



Antibody Reactive Against Recombinant Protein. Western Blot detection against Immunogen (37.51 kDa) .

STC1 Antibody (monoclonal) (M01) - Background

This gene encodes a secreted, homodimeric glycoprotein that is expressed in a wide variety of tissues and may have autocrine or paracrine functions. The gene contains a 5' UTR rich in CAG trinucleotide repeats. The encoded protein contains 11 conserved cysteine residues and is phosphorylated by protein kinase C exclusively on its serine residues. The protein may play a role in the regulation of renal and intestinal calcium and phosphate transport, cell metabolism, or cellular calcium/phosphate homeostasis. Overexpression of human stanniocalcin 1 in mice produces high serum phosphate levels, dwarfism, and increased metabolic rate. This gene has altered expression in hepatocellular, ovarian, and breast cancers.

STC1 Antibody (monoclonal) (M01) - References

1. Human stanniocalcin-1 interacts with nuclear and cytoplasmic proteins and acts as a SUMO E3 ligase. dos Santos MT, Trindade DM, Goncalves Kde A, Bressan GC, Anastassopoulos F, Yunes JA, Kobarg J. Mol Biosyst. 2011 Jan;7(1):180-93. Epub 2010 Nov 1.