

**STEAP1 Antibody (monoclonal) (M01)****Mouse monoclonal antibody raised against a full length recombinant STEAP1.****Catalog # AT4074a****Specification**

---

**STEAP1 Antibody (monoclonal) (M01) - Product Information**

Application	IF, WB, E
Primary Accession	<a href="#">Q9UHE8</a>
Other Accession	<a href="#">BC011802</a>
Reactivity	Human
Host	mouse
Clonality	Monoclonal
Isotype	IgG1 Kappa
Calculated MW	39851

**STEAP1 Antibody (monoclonal) (M01) - Additional Information****Gene ID** 26872**Other Names**

Metalloreductase STEAP1, 1161-, Six-transmembrane epithelial antigen of prostate 1, STEAP1, PRSS24, STEAP

**Target/Specificity**

STEAP1 (AAH11802, 1 a.a. ~ 339 a.a) full-length recombinant protein with GST tag. MW of the GST tag alone is 26 KDa.

**Dilution**

WB~~1:500~1000

**Format**

Clear, colorless solution in phosphate buffered saline, pH 7.2 .

**Storage**

Store at -20°C or lower. Aliquot to avoid repeated freezing and thawing.

**Precautions**

STEAP1 Antibody (monoclonal) (M01) is for research use only and not for use in diagnostic or therapeutic procedures.

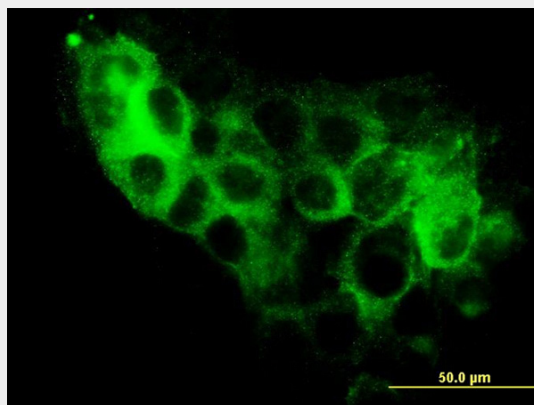
**STEAP1 Antibody (monoclonal) (M01) - Protocols**

Provided below are standard protocols that you may find useful for product applications.

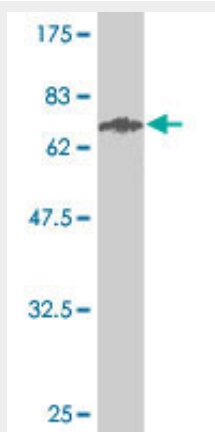
- [Western Blot](#)
- [Blocking Peptides](#)
- [Dot Blot](#)

- [Immunohistochemistry](#)
- [Immunofluorescence](#)
- [Immunoprecipitation](#)
- [Flow Cytometry](#)
- [Cell Culture](#)

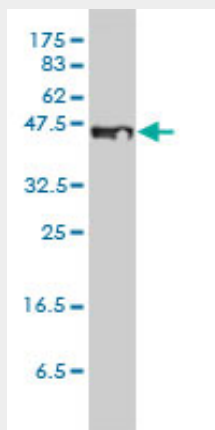
### STEAP1 Antibody (monoclonal) (M01) - Images



Immunofluorescence of monoclonal antibody to STEAP1 on A-431 cell. [antibody concentration 10 ug/ml]

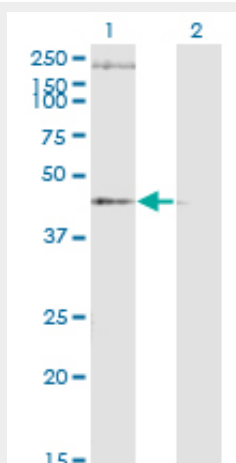


Antibody Reactive Against Recombinant Protein. Western Blot detection against Immunogen (63.03 KDa) .



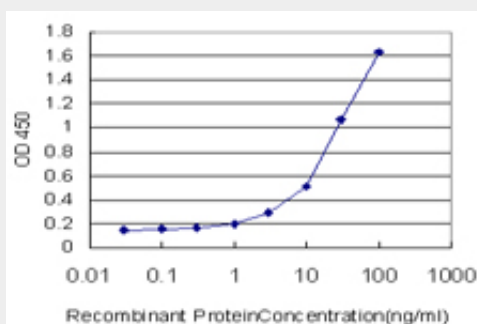
STEAP1 monoclonal antibody (M01), clone 4F6-1F3 Western Blot analysis of STEAP1 expression in

#### A-431 ( (Cat # AT4074a )



Western Blot analysis of STEAP1 expression in transfected 293T cell line by STEAP1 monoclonal antibody (M01), clone 4F6-1F3.

Lane 1: STEAP1 transfected lysate (Predicted MW: 39.9 kDa).  
Lane 2: Non-transfected lysate.



Detection limit for recombinant GST tagged STEAP1 is approximately 0.3ng/ml as a capture antibody.

#### STEAP1 Antibody (monoclonal) (M01) - Background

This gene is predominantly expressed in prostate tissue, and is found to be upregulated in multiple cancer cell lines. The gene product is predicted to be a six-transmembrane protein, and was shown to be a cell surface antigen significantly expressed at cell-cell junctions.

#### STEAP1 Antibody (monoclonal) (M01) - References

Evaluation of candidate stromal epithelial cross-talk genes identifies association between risk of serous ovarian cancer and TERT, a cancer susceptibility hot-spot. Johnatty SE, et al. PLoS Genet, 2010 Jul 8. PMID 20628624. Six-transmembrane epithelial antigen of the prostate (STEAP1 and STEAP2)-differentially expressed by murine and human mesenchymal stem cells. Vaghjiani RJ, et al. Tissue Eng Part A, 2009 Aug. PMID 19196137. Common genetic variation in candidate genes and susceptibility to subtypes of breast cancer. Mavaddat N, et al. Cancer Epidemiol Biomarkers Prev, 2009 Jan. PMID 19124506. STEAP1 is over-expressed in breast cancer and down-regulated by 17beta-estradiol in MCF-7 cells and in the rat mammary gland. Maia CJ, et al. Endocrine, 2008 Aug-Dec. PMID 18958632. STEAP mRNA detection in serum of patients with solid tumours. Valenti MT, et al. Cancer Lett, 2009 Jan 8. PMID 18793824.