

**STX1A Antibody (monoclonal) (M02)****Mouse monoclonal antibody raised against a full length recombinant STX1A.****Catalog # AT4095a****Specification**

---

**STX1A Antibody (monoclonal) (M02) - Product Information**

|                   |                            |
|-------------------|----------------------------|
| Application       | WB, IF, E                  |
| Primary Accession | <a href="#">Q16623</a>     |
| Other Accession   | <a href="#">BC003011.1</a> |
| Reactivity        | Human, Rat                 |
| Host              | mouse                      |
| Clonality         | Monoclonal                 |
| Isotype           | IgG1 Kappa                 |
| Calculated MW     | 33023                      |

**STX1A Antibody (monoclonal) (M02) - Additional Information****Gene ID** 6804**Other Names**

Syntaxin-1A, Neuron-specific antigen HPC-1, STX1A, STX1

**Target/Specificity**

STX1A (AAH03011.1, 1 a.a. ~ 251 a.a) full-length recombinant protein with GST tag. MW of the GST tag alone is 26 KDa.

**Dilution**

WB~~1:500~1000

IF~~1:50~200

E~~N/A

**Format**

Clear, colorless solution in phosphate buffered saline, pH 7.2 .

**Storage**

Store at -20°C or lower. Aliquot to avoid repeated freezing and thawing.

**Precautions**

STX1A Antibody (monoclonal) (M02) is for research use only and not for use in diagnostic or therapeutic procedures.

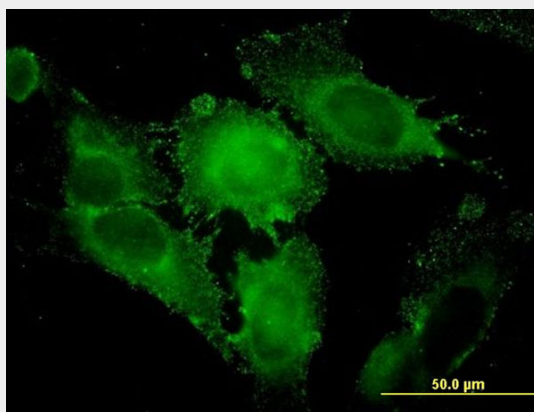
**STX1A Antibody (monoclonal) (M02) - Protocols**

Provided below are standard protocols that you may find useful for product applications.

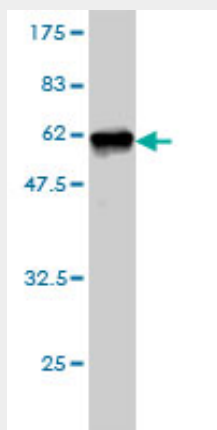
- [Western Blot](#)
- [Blocking Peptides](#)

- [Dot Blot](#)
- [Immunohistochemistry](#)
- [Immunofluorescence](#)
- [Immunoprecipitation](#)
- [Flow Cytometry](#)
- [Cell Culture](#)

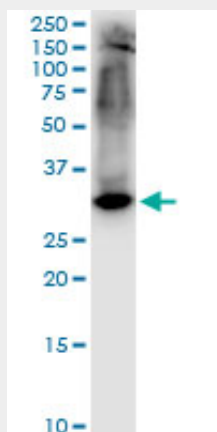
### STX1A Antibody (monoclonal) (M02) - Images



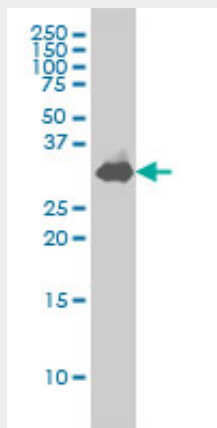
Immunofluorescence of monoclonal antibody to STX1A on HeLa cell. [antibody concentration 10 ug/ml]



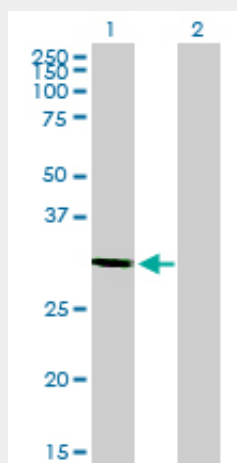
Antibody Reactive Against Recombinant Protein. Western Blot detection against Immunogen (53.35 KDa) .



STX1A monoclonal antibody (M02), clone 1B11-1A8. Western Blot analysis of STX1A expression in PC-12((Cat # AT4095a )



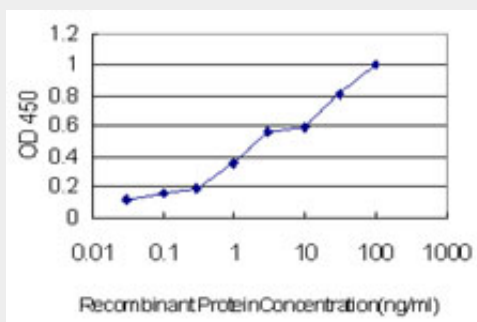
STX1A monoclonal antibody (M02), clone 1B11-1A8 Western Blot analysis of STX1A expression in IMR-32 ( (Cat # AT4095a )



Western Blot analysis of STX1A expression in transfected 293T cell line by STX1A monoclonal antibody (M02), clone 1B11-1A8.

Lane 1: STX1A transfected lysate(29 KDa).

Lane 2: Non-transfected lysate.



Detection limit for recombinant GST tagged STX1A is approximately 0.1ng/ml as a capture antibody.

### STX1A Antibody (monoclonal) (M02) - Background

Synaptic vesicles store neurotransmitters that are released during calcium-regulated exocytosis. The specificity of neurotransmitter release requires the localization of both synaptic vesicles and calcium channels to the presynaptic active zone. Syntaxins function in this vesicle fusion process. Syntaxins also serve as a substrate for botulinum neurotoxin type C, a metalloprotease that blocks exocytosis and has high affinity for a molecular complex that includes the alpha-latrotoxin receptor (MIM 600565) which produces explosive exocytosis (Zhang et al., 1995 [PubMed 7622072]).[supplied by OMIM]