

**T Antibody (monoclonal) (M02)****Mouse monoclonal antibody raised against a partial recombinant T.****Catalog # AT4131a****Specification**

---

**T Antibody (monoclonal) (M02) - Product Information**

Application	WB, E
Primary Accession	<a href="#">O15178</a>
Other Accession	<a href="#">NM_003181</a>
Reactivity	Human
Host	Mouse
Clonality	Monoclonal
Isotype	IgG2a Kappa
Calculated MW	47443

**T Antibody (monoclonal) (M02) - Additional Information****Gene ID** 6862**Other Names**

Brachyury protein, Protein T, T

**Target/Specificity**

T (NP\_003172, 222 a.a. ~ 320 a.a) partial recombinant protein with GST tag. MW of the GST tag alone is 26 KDa.

**Dilution**

WB~~1:500~1000

E~~N/A

**Format**

Clear, colorless solution in phosphate buffered saline, pH 7.2 .

**Storage**

Store at -20°C or lower. Aliquot to avoid repeated freezing and thawing.

**Precautions**

T Antibody (monoclonal) (M02) is for research use only and not for use in diagnostic or therapeutic procedures.

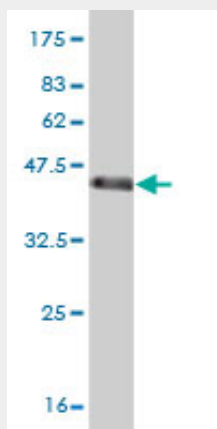
**T Antibody (monoclonal) (M02) - Protocols**

Provided below are standard protocols that you may find useful for product applications.

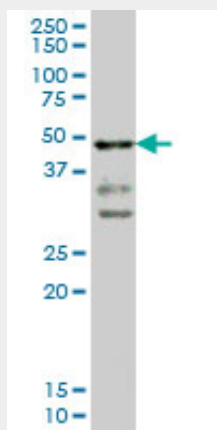
- [Western Blot](#)
- [Blocking Peptides](#)
- [Dot Blot](#)

- [Immunohistochemistry](#)
- [Immunofluorescence](#)
- [Immunoprecipitation](#)
- [Flow Cytometry](#)
- [Cell Culture](#)

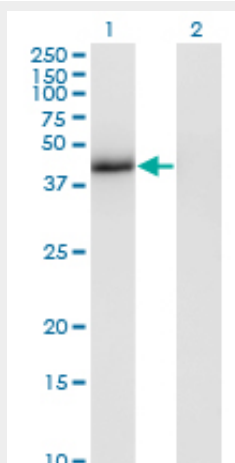
## T Antibody (monoclonal) (M02) - Images



Antibody Reactive Against Recombinant Protein. Western Blot detection against Immunogen (36.63 kDa) .

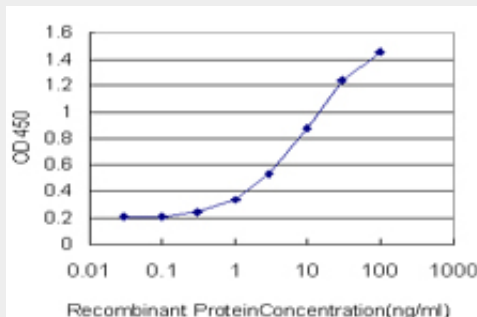


T monoclonal antibody (M02), clone 5C5 Western Blot analysis of T expression in A-549 ( Cat # AT4131a )



Western Blot analysis of T expression in transfected 293T cell line by T monoclonal antibody (M02), clone 5C5.

Lane 1: T transfected lysate(41.1 KDa).  
Lane 2: Non-transfected lysate.



Detection limit for recombinant GST tagged T is approximately 0.3ng/ml as a capture antibody.

### **T Antibody (monoclonal) (M02) - Background**

The protein encoded by this gene is an embryonic nuclear transcription factor that binds to a specific DNA element, the palindromic T-site. It binds through a region in its N-terminus, called the T-box, and effects transcription of genes required for mesoderm formation and differentiation. The protein is localized to notochord-derived cells.

### **T Antibody (monoclonal) (M02) - References**

Revisiting chordoma with brachyury, a new age marker: analysis of a validation study on 51 cases. Jambhekar NA, et al. Arch Pathol Lab Med, 2010 Aug. PMID 20670140. Generalist genes analysis of DNA markers associated with mathematical ability and disability reveals shared influence across ages and abilities. Docherty SJ, et al. BMC Genet, 2010 Jul 5. PMID 20602751. T (brachyury) gene duplication confers major susceptibility to familial chordoma. Yang XR, et al. Nat Genet, 2009 Nov. PMID 19801981. Brachyury, SOX-9, and podoplanin, new markers in the skull base chordoma vs chondrosarcoma differential: a tissue microarray-based comparative analysis. Oakley GJ, et al. Mod Pathol, 2008 Dec. PMID 18820665. Mesp1 acts as a master regulator of multipotent cardiovascular progenitor specification. Bondue A, et al. Cell Stem Cell, 2008 Jul 3. PMID 18593560.