

TAPBPL Antibody (monoclonal) (M02)**Mouse monoclonal antibody raised against a partial recombinant TAPBPL.****Catalog # AT4151a****Specification**

TAPBPL Antibody (monoclonal) (M02) - Product Information

| | |
|-------------------|---------------------------|
| Application | WB, E |
| Primary Accession | Q9BX59 |
| Other Accession | NM_018009 |
| Reactivity | Human |
| Host | mouse |
| Clonality | Monoclonal |
| Isotype | IgG2a Kappa |
| Calculated MW | 50183 |

TAPBPL Antibody (monoclonal) (M02) - Additional Information**Gene ID** 55080**Other Names**

Tapasin-related protein, TAPASIN-R, TAP-binding protein-like, TAP-binding protein-related protein, TAPBP-R, Tapasin-like, TAPBPL

Target/Specificity

TAPBPL (NP_060479, 23 a.a. ~ 121 a.a) partial recombinant protein with GST tag. MW of the GST tag alone is 26 KDa.

Dilution

WB~~1:500~1000

Format

Clear, colorless solution in phosphate buffered saline, pH 7.2 .

Storage

Store at -20°C or lower. Aliquot to avoid repeated freezing and thawing.

Precautions

TAPBPL Antibody (monoclonal) (M02) is for research use only and not for use in diagnostic or therapeutic procedures.

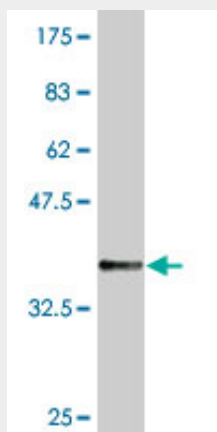
TAPBPL Antibody (monoclonal) (M02) - Protocols

Provided below are standard protocols that you may find useful for product applications.

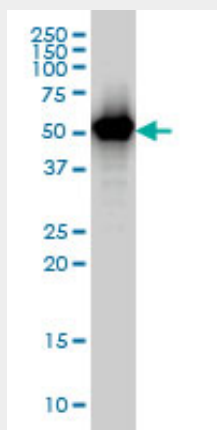
- [Western Blot](#)
- [Blocking Peptides](#)
- [Dot Blot](#)

- [Immunohistochemistry](#)
- [Immunofluorescence](#)
- [Immunoprecipitation](#)
- [Flow Cytometry](#)
- [Cell Culture](#)

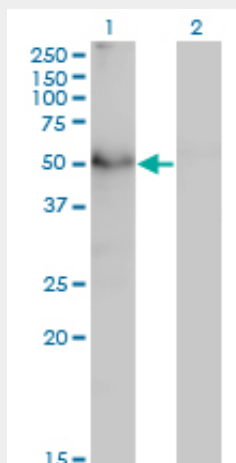
TAPBPL Antibody (monoclonal) (M02) - Images



Antibody Reactive Against Recombinant Protein. Western Blot detection against Immunogen (36.63 kDa) .



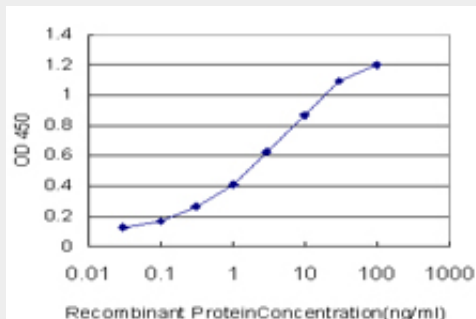
TAPBPL monoclonal antibody (M02), clone 6E3 Western Blot analysis of TAPBPL expression in A-431 ((Cat # AT4151a)



Western Blot analysis of TAPBPL expression in transfected 293T cell line by TAPBPL monoclonal antibody (M02), clone 6E3.

Lane 1: TAPBPL transfected lysate(50.2 KDa).

Lane 2: Non-transfected lysate.



Detection limit for recombinant GST tagged TAPBPL is approximately 0.03ng/ml as a capture antibody.

TAPBPL Antibody (monoclonal) (M02) - Background

Tapasin, or TAPBP (MIM 601962), is a member of the variable-constant Ig superfamily that links major histocompatibility complex (MHC) class I molecules to the transporter associated with antigen processing (TAP; see MIM 170260) in the endoplasmic reticulum (ER). The TAPBP gene is located near the MHC complex on chromosome 6p21.3. TAPBPL is a member of the Ig superfamily that is localized on chromosome 12p13.3, a region somewhat paralogous to the MHC.

TAPBPL Antibody (monoclonal) (M02) - References

Association between genetic variants in VEGF, ERCC3 and occupational benzene haematotoxicity. Hosgood HD 3rd, et al. Occup Environ Med, 2009 Dec. PMID 19773279. Transcriptomic and genetic studies identify IL-33 as a candidate gene for Alzheimer's disease. Chapuis J, et al. Mol Psychiatry, 2009 Nov. PMID 19204726. Further examination of the candidate genes in chromosome 12p13 locus for late-onset Alzheimer disease. Lee JH, et al. Neurogenetics, 2008 May. PMID 18340469. Diversification of transcriptional modulation: large-scale identification and characterization of putative alternative promoters of human genes. Kimura K, et al. Genome Res, 2006 Jan. PMID 16344560. The status, quality, and expansion of the NIH full-length cDNA project: the Mammalian Gene Collection (MGC). Gerhard DS, et al. Genome Res, 2004 Oct. PMID 15489334.