

**TCF2 Antibody (monoclonal) (M06)****Mouse monoclonal antibody raised against a partial recombinant TCF2.****Catalog # AT4184a****Specification**

---

**TCF2 Antibody (monoclonal) (M06) - Product Information**

Application	WB
Primary Accession	<a href="#">P35680</a>
Other Accession	<a href="#">NM_000458</a>
Reactivity	Human, Mouse, Rat
Host	mouse
Clonality	Monoclonal
Isotype	IgG2b Kappa
Calculated MW	61324

**TCF2 Antibody (monoclonal) (M06) - Additional Information****Gene ID** 6928**Other Names**

Hepatocyte nuclear factor 1-beta, HNF-1-beta, HNF-1B, Homeoprotein LFB3, Transcription factor 2, TCF-2, Variant hepatic nuclear factor 1, vHNF1, HNF1B, TCF2

**Target/Specificity**

TCF2 (NP\_000449, 29 a.a. ~ 118 a.a) partial recombinant protein with GST tag. MW of the GST tag alone is 26 KDa.

**Dilution**

WB~~1:500~1000

**Format**

Clear, colorless solution in phosphate buffered saline, pH 7.2 .

**Storage**

Store at -20°C or lower. Aliquot to avoid repeated freezing and thawing.

**Precautions**

TCF2 Antibody (monoclonal) (M06) is for research use only and not for use in diagnostic or therapeutic procedures.

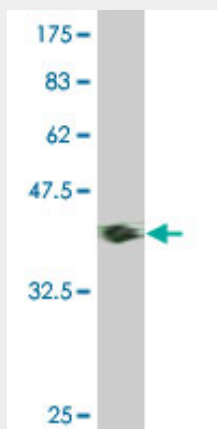
**TCF2 Antibody (monoclonal) (M06) - Protocols**

Provided below are standard protocols that you may find useful for product applications.

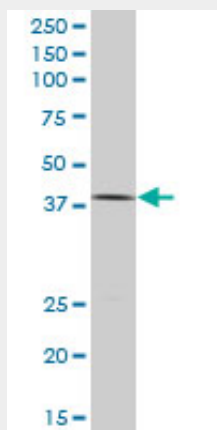
- [Western Blot](#)
- [Blocking Peptides](#)
- [Dot Blot](#)

- [Immunohistochemistry](#)
- [Immunofluorescence](#)
- [Immunoprecipitation](#)
- [Flow Cytometry](#)
- [Cell Culture](#)

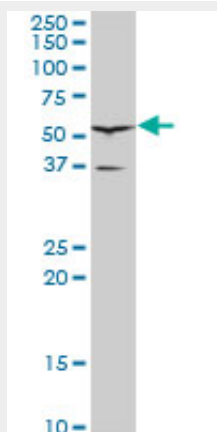
### TCF2 Antibody (monoclonal) (M06) - Images



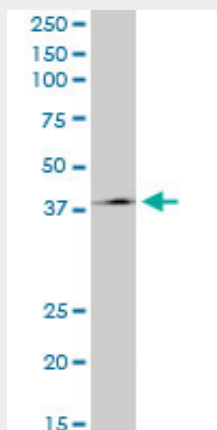
Antibody Reactive Against Recombinant Protein. Western Blot detection against Immunogen (35.90 kDa) .



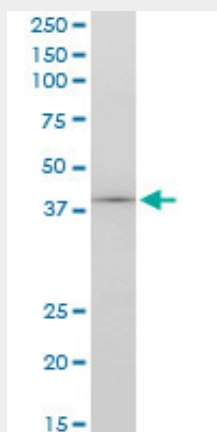
TCF2 monoclonal antibody (M06), clone 4E9. Western Blot analysis of TCF2 expression in HeLa (Cat # AT4184a )



TCF2 monoclonal antibody (M06), clone 4E9. Western Blot analysis of TCF2 expression in PC-12 (Cat # AT4184a )



TCF2 monoclonal antibody (M06), clone 4E9. Western Blot analysis of TCF2 expression in Raw 264.7((Cat # AT4184a )



TCF2 monoclonal antibody (M06), clone 4E9. Western Blot analysis of TCF2 expression in NIH/3T3((Cat # AT4184a )

#### **TCF2 Antibody (monoclonal) (M06) - Background**

This gene encodes a member of the homeodomain-containing superfamily of transcription factors. The protein binds to DNA as either a homodimer, or a heterodimer with the related protein hepatocyte nuclear factor 1-alpha. The gene has been shown to function in nephron development, and regulates development of the embryonic pancreas. Mutations in this gene result in renal cysts and diabetes syndrome and noninsulin-dependent diabetes mellitus, and expression of this gene is altered in some types of cancer. Multiple transcript variants encoding different isoforms have been found for this gene.

#### **TCF2 Antibody (monoclonal) (M06) - References**

Meta-analysis of genome-wide and replication association studies on prostate cancer. Liu H, et al. Prostate, 2010 Aug 5. PMID 20690139.COMMON VARIANTS IN 40 GENES ASSESSED FOR DIABETES INCIDENCE AND RESPONSE TO METFORMIN AND LIFESTYLE INTERVENTIONS IN THE DIABETES PREVENTION PROGRAM. Jablonski KA, et al. Diabetes, 2010 Aug 3. PMID 20682687.Mutations in the hepatocyte nuclear factor-1beta (HNF1B) gene are common with combined uterine and renal malformations but are not found with isolated uterine malformations. Oram RA, et al. Am J Obstet Gynecol, 2010 Jul 14. PMID 20633866.Variation at the NFATC2 Locus Increases the Risk of Thiazolinedione-Induced Edema in the Diabetes REDuction Assessment with ramipril and

rosiglitazone Medication (DREAM) Study. Bailey SD, et al. Diabetes Care, 2010 Jul 13. PMID 20628086. Number of prostate cancer risk alleles may identify possibly 'insignificant' disease. Helfand BT, et al. BJU Int, 2010 Jun 30. PMID 20590552.