

TCF7L2 Antibody (monoclonal) (M06)

Mouse monoclonal antibody raised against a partial recombinant TCF7L2.

Catalog # AT4192a

Specification

TCF7L2 Antibody (monoclonal) (M06) - Product Information

Application	IF, WB, IHC, E
Primary Accession	O9NOB0
Other Accession	NM_030756
Reactivity	Human
Host	Mouse
Clonality	Monoclonal
Isotype	IgG1 Kappa
Calculated MW	67919

TCF7L2 Antibody (monoclonal) (M06) - Additional Information

Gene ID 6934

Other Names

Transcription factor 7-like 2, HMG box transcription factor 4, T-cell-specific transcription factor 4, T-cell factor 4, TCF-4, hTCF-4, TCF7L2, TCF4

Target/Specificity

TCF7L2 (NP_110383, 490 a.a. ~ 596 a.a) partial recombinant protein with GST tag. MW of the GST tag alone is 26 KDa.

Dilution

WB~~1:500~1000

Format

Clear, colorless solution in phosphate buffered saline, pH 7.2 .

Storage

Store at -20°C or lower. Aliquot to avoid repeated freezing and thawing.

Precautions

TCF7L2 Antibody (monoclonal) (M06) is for research use only and not for use in diagnostic or therapeutic procedures.

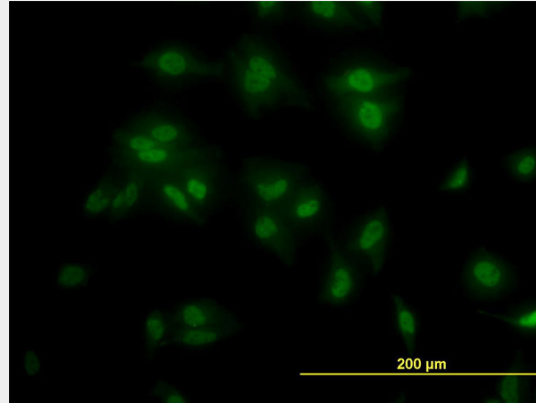
TCF7L2 Antibody (monoclonal) (M06) - Protocols

Provided below are standard protocols that you may find useful for product applications.

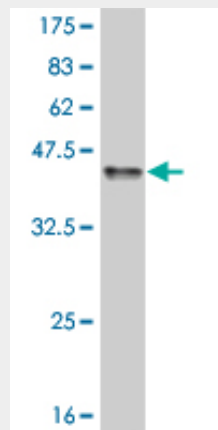
- [Western Blot](#)
- [Blocking Peptides](#)
- [Dot Blot](#)

- [Immunohistochemistry](#)
- [Immunofluorescence](#)
- [Immunoprecipitation](#)
- [Flow Cytometry](#)
- [Cell Culture](#)

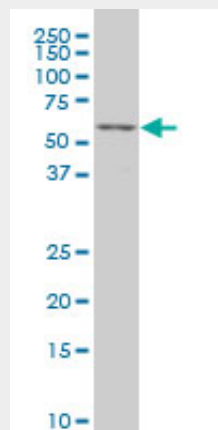
TCF7L2 Antibody (monoclonal) (M06) - Images



Immunofluorescence of monoclonal antibody to TCF7L2 on HeLa cell. [antibody concentration 10 ug/ml]

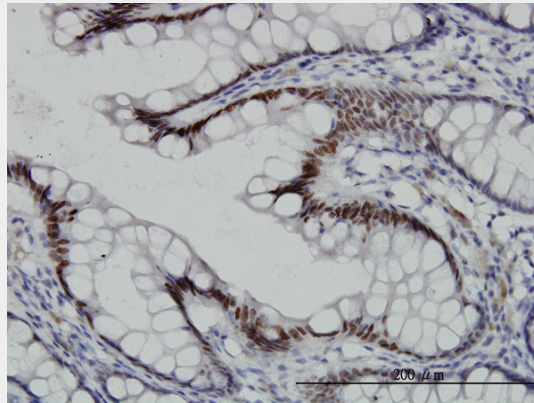


Antibody Reactive Against Recombinant Protein. Western Blot detection against Immunogen (37.51 KDa) .

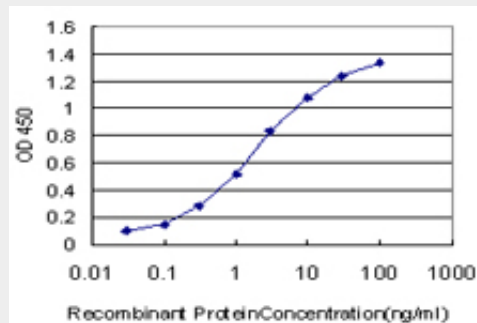


TCF7L2 monoclonal antibody (M06), clone 3A4 Western Blot analysis of TCF7L2 expression in

K-562 ((Cat # AT4192a)



Immunoperoxidase of monoclonal antibody to TCF7L2 on formalin-fixed paraffin-embedded human colon. [antibody concentration 3 ug/ml]



Detection limit for recombinant GST tagged TCF7L2 is approximately 0.03ng/ml as a capture antibody.

TCF7L2 Antibody (monoclonal) (M06) - Background

This gene encodes a high mobility group (HMG) box-containing transcription factor that plays a key role in the Wnt signaling pathway. The protein has been implicated in blood glucose homeostasis. Genetic variants of this gene are associated with increased risk of type 2 diabetes.

TCF7L2 Antibody (monoclonal) (M06) - References

Glycemia determines the effect of type 2 diabetes risk genes on insulin secretion. Heni M, et al. *Diabetes*, 2010 Aug 29. PMID 20802253. Role of BMI in the Association of the TCF7L2 rs7903146 Variant with Coronary Heart Disease: The Atherosclerosis Risk in Communities (ARIC) Study. Kucharska-Newton AM, et al. *J Obes*, 2010. PMID 20798759. Hyperglycemia and Adverse Pregnancy Outcome (HAPO) Study: common genetic variants in GSK and TCF7L2 are associated with fasting and post-challenge glucose levels in pregnancy and with the new consensus definition of gestational diabetes from the International Association of Diabetes and Pregnancy Study Groups. Freathy RM, et al. *Diabetes*, 2010 Aug 3. PMID 20682688. The balance of TCF7L2 variants with differential activities in Wnt-signaling is regulated by lithium in a GSK3beta-independent manner. Struewing I, et al. *Biochem Biophys Res Commun*, 2010 Aug 20. PMID 20654575. Potential role of TCF7L2 gene variants on cardiac sympathetic/parasympathetic activity. Boccardi V, et al. *Eur J Hum Genet*, 2010 Jul 21. PMID 20648057.