

**TCP1 Antibody (monoclonal) (M01)****Mouse monoclonal antibody raised against a full length recombinant TCP1.****Catalog # AT4198a****Specification**

---

**TCP1 Antibody (monoclonal) (M01) - Product Information**

Application	WB, IHC, IF, E
Primary Accession	<a href="#">P17987</a>
Other Accession	<a href="#">BC000665</a>
Reactivity	Human
Host	mouse
Clonality	Monoclonal
Isotype	IgG1 kappa
Calculated MW	60344

**TCP1 Antibody (monoclonal) (M01) - Additional Information****Gene ID** 6950**Other Names**

T-complex protein 1 subunit alpha, TCP-1-alpha, CCT-alpha, TCP1, CCT1, CCTA

**Target/Specificity**

TCP1 (AAH00665, 1 a.a. ~ 556 a.a) full-length recombinant protein with GST tag. MW of the GST tag alone is 26 KDa.

**Dilution**

WB~~1:500~1000

IHC~~1:100~500

IF~~1:50~200

E~~N/A

**Format**

Clear, colorless solution in phosphate buffered saline, pH 7.2 .

**Storage**

Store at -20°C or lower. Aliquot to avoid repeated freezing and thawing.

**Precautions**

TCP1 Antibody (monoclonal) (M01) is for research use only and not for use in diagnostic or therapeutic procedures.

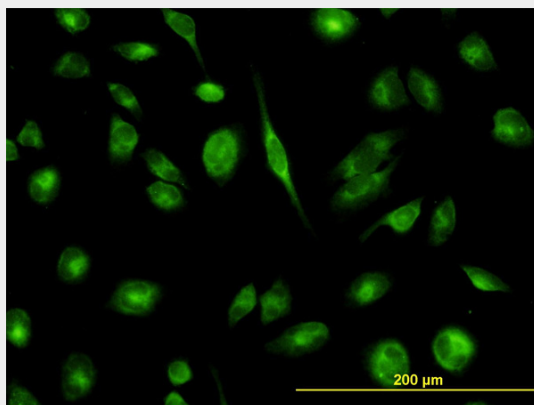
**TCP1 Antibody (monoclonal) (M01) - Protocols**

Provided below are standard protocols that you may find useful for product applications.

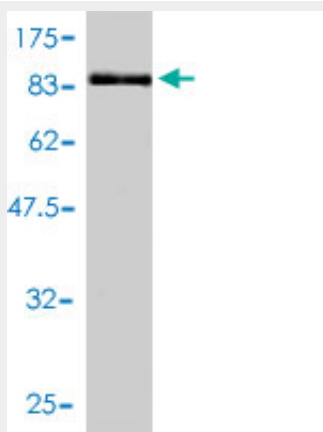
- [Western Blot](#)

- [Blocking Peptides](#)
- [Dot Blot](#)
- [Immunohistochemistry](#)
- [Immunofluorescence](#)
- [Immunoprecipitation](#)
- [Flow Cytometry](#)
- [Cell Culture](#)

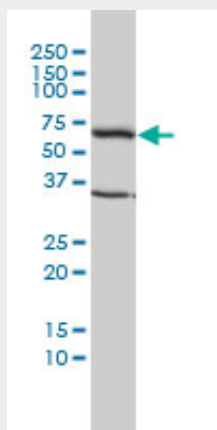
## TCP1 Antibody (monoclonal) (M01) - Images



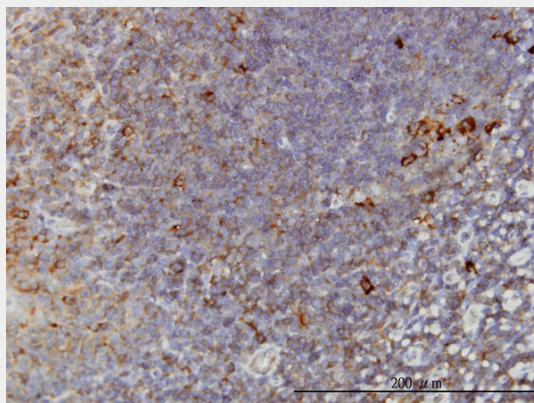
Immunofluorescence of monoclonal antibody to TCP1 on HeLa cell. [antibody concentration 10 ug/ml]



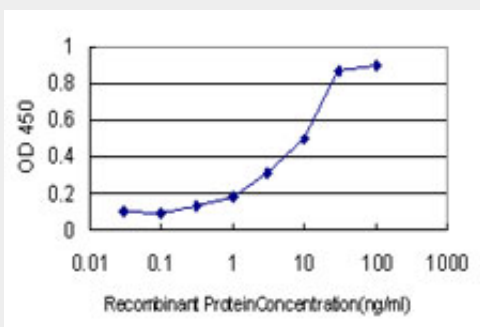
Antibody Reactive Against Recombinant Protein. Western Blot detection against Immunogen (87.01 KDa) .



TCP1 monoclonal antibody (M01), clone 2B2-D6 Western Blot analysis of TCP1 expression in Hela (Cat # AT4198a)



Immunoperoxidase of monoclonal antibody to TCP1 on formalin-fixed paraffin-embedded human tonsil. [antibody concentration 3 ug/ml]



Detection limit for recombinant GST tagged TCP1 is approximately 0.1ng/ml as a capture antibody.

### **TCP1 Antibody (monoclonal) (M01) - Background**

The protein encoded by this gene is a molecular chaperone that is a member of the chaperonin containing TCP1 complex (CCT), also known as the TCP1 ring complex (TRiC). This complex consists of two identical stacked rings, each containing eight different proteins. Unfolded polypeptides enter the central cavity of the complex and are folded in an ATP-dependent manner. The complex folds various proteins, including actin and tubulin. Alternate transcriptional splice variants of this gene, encoding different isoforms, have been characterized. In addition, three pseudogenes that appear to be derived from this gene have been found.

### **TCP1 Antibody (monoclonal) (M01) - References**

1. BBS6, BBS10, and BBS12 form a complex with CCT/TRiC family chaperonins and mediate BBSome assembly. Seo S, Baye LM, Schulz NP, Beck JS, Zhang Q, Slusarski DC, Sheffield VC. Proc Natl Acad Sci U S A. 2010 Jan 4. [Epub ahead of print]