

**TLR5 Antibody (monoclonal) (M03)****Mouse monoclonal antibody raised against a partial recombinant TLR5.****Catalog # AT4257a****Specification**

---

**TLR5 Antibody (monoclonal) (M03) - Product Information**

Application	E
Primary Accession	<a href="#">O60602</a>
Other Accession	<a href="#">NM_003268</a>
Reactivity	Human
Host	mouse
Clonality	Monoclonal
Isotype	IgG2b Kappa
Calculated MW	97800

**TLR5 Antibody (monoclonal) (M03) - Additional Information****Gene ID** 7100**Other Names**

Toll-like receptor 5, Toll/interleukin-1 receptor-like protein 3, TLR5, TIL3

**Target/Specificity**

TLR5 (NP\_003259, 517 a.a. ~ 634 a.a) partial recombinant protein with GST tag. MW of the GST tag alone is 26 KDa.

**Dilution**

E~~N/A

**Format**

Clear, colorless solution in phosphate buffered saline, pH 7.2 .

**Storage**

Store at -20°C or lower. Aliquot to avoid repeated freezing and thawing.

**Precautions**

TLR5 Antibody (monoclonal) (M03) is for research use only and not for use in diagnostic or therapeutic procedures.

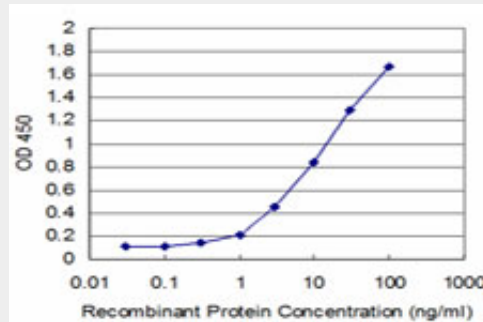
**TLR5 Antibody (monoclonal) (M03) - Protocols**

Provided below are standard protocols that you may find useful for product applications.

- [Western Blot](#)
- [Blocking Peptides](#)
- [Dot Blot](#)
- [Immunohistochemistry](#)

- [Immunofluorescence](#)
- [Immunoprecipitation](#)
- [Flow Cytometry](#)
- [Cell Culture](#)

### **TLR5 Antibody (monoclonal) (M03) - Images**



Detection limit for recombinant GST tagged TLR5 is approximately 0.3ng/ml as a capture antibody.

### **TLR5 Antibody (monoclonal) (M03) - Background**

This gene encodes a member of the toll-like receptor (TLR) family, which plays a fundamental role in pathogen recognition and activation of innate immune responses. These receptors recognize distinct pathogen-associated molecular patterns that are expressed on infectious agents. The protein encoded by this gene recognizes bacterial flagellin, the principal component of bacterial flagella and a virulence factor. The activation of this receptor mobilizes the nuclear factor NF-kappaB, which in turn activates a host of inflammatory-related target genes. Mutations in this gene have been associated with both resistance and susceptibility to systemic lupus erythematosus, and susceptibility to Legionnaire disease.

### **TLR5 Antibody (monoclonal) (M03) - References**

An approach based on a genome-wide association study reveals candidate loci for narcolepsy. Shimada M, et al. Hum Genet, 2010 Oct. PMID 20677014. A genetic association study of maternal and fetal candidate genes that predispose to preterm prelabor rupture of membranes (PROM). Romero R, et al. Am J Obstet Gynecol, 2010 Jul 29. PMID 20673868. Variation at the NFATC2 Locus Increases the Risk of Thiazolidinedione-Induced Edema in the Diabetes REduction Assessment with ramipril and rosiglitazone Medication (DREAM) Study. Bailey SD, et al. Diabetes Care, 2010 Jul 13. PMID 20628086. IL1RN VNTR and IL2-330 polymorphic genes are independently associated with chronic immune thrombocytopenia. Rocha AM, et al. Br J Haematol, 2010 Jul 9. PMID 20626741. A comprehensive genotype-phenotype interaction of different Toll-like receptor variations in a renal transplant cohort. Krüger B, et al. Clin Sci (Lond), 2010 Jul 6. PMID 20604744.