

TOP3B Antibody (monoclonal) (M01)**Mouse monoclonal antibody raised against a full length recombinant TOP3B.****Catalog # AT4306a****Specification**

TOP3B Antibody (monoclonal) (M01) - Product Information

Application	WB, E
Primary Accession	O95985
Other Accession	BC002432
Reactivity	Human
Host	mouse
Clonality	Monoclonal
Isotype	IgG2b Kappa
Calculated MW	96662

TOP3B Antibody (monoclonal) (M01) - Additional Information**Gene ID** 8940**Other Names**

DNA topoisomerase 3-beta-1, DNA topoisomerase III beta-1, TOP3B, TOP3B1

Target/Specificity

TOP3B (AAH02432, 1 a.a. ~ 862 a.a) full-length recombinant protein with GST tag. MW of the GST tag alone is 26 KDa.

Dilution

WB~~1:500~1000

Format

Clear, colorless solution in phosphate buffered saline, pH 7.2 .

Storage

Store at -20°C or lower. Aliquot to avoid repeated freezing and thawing.

Precautions

TOP3B Antibody (monoclonal) (M01) is for research use only and not for use in diagnostic or therapeutic procedures.

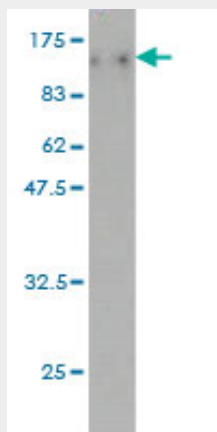
TOP3B Antibody (monoclonal) (M01) - Protocols

Provided below are standard protocols that you may find useful for product applications.

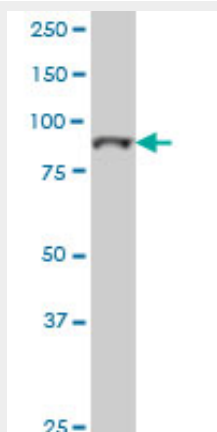
- [Western Blot](#)
- [Blocking Peptides](#)
- [Dot Blot](#)
- [Immunohistochemistry](#)

- [Immunofluorescence](#)
- [Immunoprecipitation](#)
- [Flow Cytometry](#)
- [Cell Culture](#)

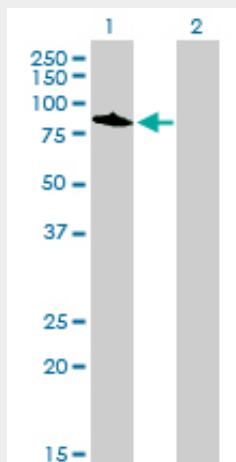
TOP3B Antibody (monoclonal) (M01) - Images



Antibody Reactive Against Recombinant Protein. Western Blot detection against Immunogen (120.56 kDa) .

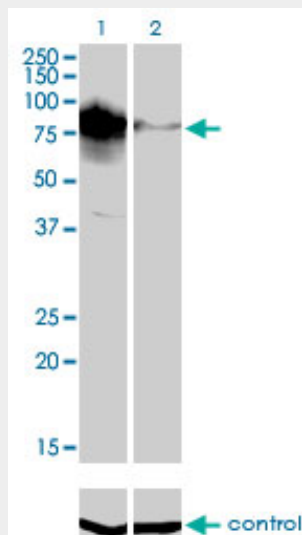


TOP3B monoclonal antibody (M01), clone 4F11 Western Blot analysis of TOP3B expression in K-562 ((Cat # AT4306a)

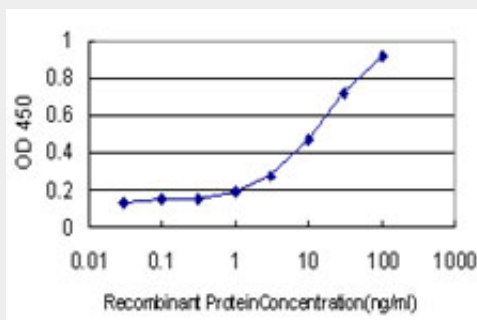


Western Blot analysis of TOP3B expression in transfected 293T cell line by TOP3B monoclonal antibody (M01), clone 4F11.

Lane 1: TOP3B transfected lysate(96.7 KDa).
Lane 2: Non-transfected lysate.



Western blot analysis of TOP3B over-expressed 293 cell line, cotransfected with TOP3B Validated Chimera RNAi (Cat # AT4306a)



Detection limit for recombinant GST tagged TOP3B is approximately 1ng/ml as a capture antibody.

TOP3B Antibody (monoclonal) (M01) - Background

This gene encodes a DNA topoisomerase, an enzyme that controls and alters the topologic states of DNA during transcription. This enzyme catalyzes the transient breaking and rejoining of a single strand of DNA which allows the strands to pass through one another, thus relaxing the supercoils and altering the topology of DNA. The enzyme interacts with DNA helicase SGS1 and plays a role in DNA recombination, cellular aging and maintenance of genome stability. Alternative splicing of the C-terminus of this gene results in three transcript variants which have distinct tissue specificity; however, not all variants have been fully described.

TOP3B Antibody (monoclonal) (M01) - References

Molecular genetics of adult ADHD: converging evidence from genome-wide association and extended pedigree linkage studies. Lesch KP, et al. J Neural Transm, 2008 Nov. PMID 18839057. Towards a proteome-scale map of the human protein-protein interaction network. Rual JF, et al. Nature, 2005 Oct 20. PMID 16189514. The status, quality, and expansion of the NIH

full-length cDNA project: the Mammalian Gene Collection (MGC). Gerhard DS, et al. Genome Res, 2004 Oct. PMID 15489334. A genome annotation-driven approach to cloning the human ORFeome. Collins JE, et al. Genome Biol, 2004. PMID 15461802. Identification of the functional elements in the promoter region of human DNA topoisomerase IIIbeta gene. Cho YH, et al. Biochim Biophys Acta, 2004 Sep 17. PMID 15358519.