

**TRIM36 Antibody (monoclonal) (M01)****Mouse monoclonal antibody raised against a partial recombinant TRIM36.****Catalog # AT4354a****Specification**

---

**TRIM36 Antibody (monoclonal) (M01) - Product Information**

Application	WB, IHC, IF, E
Primary Accession	<a href="#">O9NQ86</a>
Other Accession	<a href="#">NM_018700</a>
Reactivity	Human
Host	mouse
Clonality	Monoclonal
Isotype	IgG1 Kappa
Calculated MW	83013

**TRIM36 Antibody (monoclonal) (M01) - Additional Information****Gene ID** 55521**Other Names**

E3 ubiquitin-protein ligase TRIM36, 632-, RING finger protein 98, Tripartite motif-containing protein 36, Zinc-binding protein Rbcc728, TRIM36, RBCC728, RNF98

**Target/Specificity**

TRIM36 (NP\_061170, 391 a.a. ~ 499 a.a) partial recombinant protein with GST tag. MW of the GST tag alone is 26 KDa.

**Dilution**

WB~~1:500~1000

IHC~~1:100~500

IF~~1:50~200

E~~N/A

**Format**

Clear, colorless solution in phosphate buffered saline, pH 7.2 .

**Storage**

Store at -20°C or lower. Aliquot to avoid repeated freezing and thawing.

**Precautions**

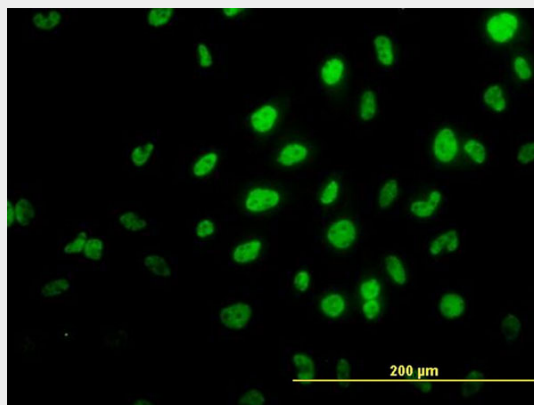
TRIM36 Antibody (monoclonal) (M01) is for research use only and not for use in diagnostic or therapeutic procedures.

**TRIM36 Antibody (monoclonal) (M01) - Protocols**

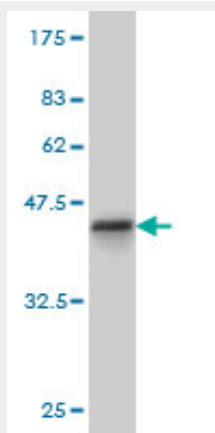
Provided below are standard protocols that you may find useful for product applications.

- [Western Blot](#)
- [Blocking Peptides](#)
- [Dot Blot](#)
- [Immunohistochemistry](#)
- [Immunofluorescence](#)
- [Immunoprecipitation](#)
- [Flow Cytometry](#)
- [Cell Culture](#)

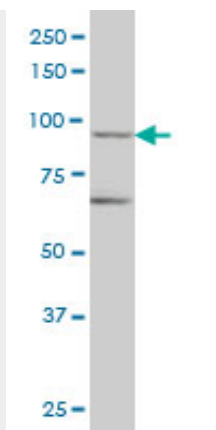
#### TRIM36 Antibody (monoclonal) (M01) - Images



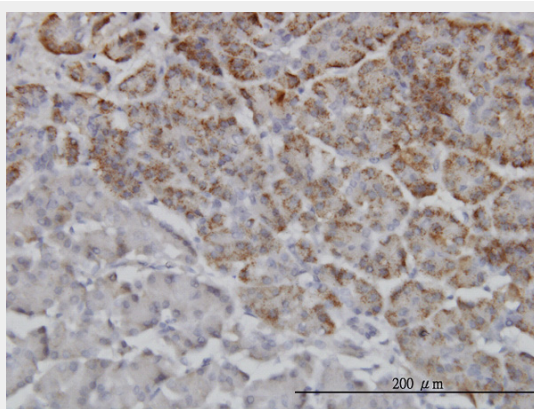
Immunofluorescence of monoclonal antibody to TRIM36 on HeLa cell. [antibody concentration 10 ug/ml]



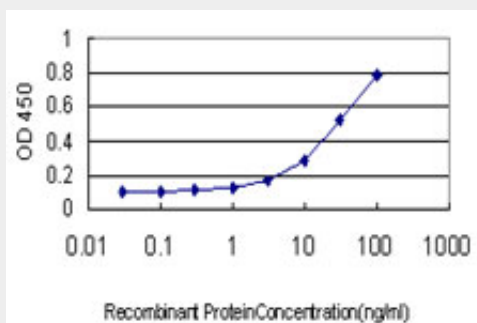
Antibody Reactive Against Recombinant Protein. Western Blot detection against Immunogen (37.73 KDa) .



TRIM36 monoclonal antibody (M01), clone 2D11 Western Blot analysis of TRIM36 expression in IMR-32 (Cat # AT4354a)



Immunoperoxidase of monoclonal antibody to TRIM36 on formalin-fixed paraffin-embedded human pancreas. [antibody concentration 3 ug/ml]



Detection limit for recombinant GST tagged TRIM36 is approximately 1ng/ml as a capture antibody.

### TRIM36 Antibody (monoclonal) (M01) - Background

The protein encoded by this gene is a member of the tripartite motif (TRIM) family. The TRIM motif includes three zinc-binding domains, a RING, a B-box type 1 and a B-box type 2, and a coiled-coil region. Multiple alternatively spliced transcript variants that encode different protein isoforms have been described for this gene.

### TRIM36 Antibody (monoclonal) (M01) - References

Personalized smoking cessation: interactions between nicotine dose, dependence and quit-success genotype score. Rose JE, et al. Mol Med, 2010 Jul-Aug. PMID 20379614. TRIM36 interacts with the

kinetochore protein CENP-H and delays cell cycle progression. Miyajima N, et al. Biochem Biophys Res Commun, 2009 Apr 10. PMID 19232519. Identification of human HAPRIN potentially involved in the acrosome reaction. Kitamura K, et al. J Androl, 2005 Jul-Aug. PMID 15955891. Cloning and characterisation of the RBCC728/TRIM36 zinc-binding protein from the tumor suppressor gene region at chromosome 5q22.3. Balint I, et al. Gene, 2004 May 12. PMID 15145053. Generation and initial analysis of more than 15,000 full-length human and mouse cDNA sequences. Strausberg RL, et al. Proc Natl Acad Sci U S A, 2002 Dec 24. PMID 12477932.