

TTF2 Antibody (monoclonal) (M12)**Mouse monoclonal antibody raised against a full length recombinant TTF2.****Catalog # AT4390a****Specification**

TTF2 Antibody (monoclonal) (M12) - Product Information

Application	WB, E
Primary Accession	O9UNY4
Other Accession	NM_003594
Reactivity	Human
Host	mouse
Clonality	Monoclonal
Isotype	IgG2a Kappa
Calculated MW	129588

TTF2 Antibody (monoclonal) (M12) - Additional Information**Gene ID** 8458**Other Names**

Transcription termination factor 2, 364-, Lodestar homolog, RNA polymerase II termination factor, Transcription release factor 2, F2, HuF2, TTF2

Target/Specificity

TTF2 (NP_003585, 385 a.a. ~ 509 a.a) full length recombinant protein with GST tag. MW of the GST tag alone is 26 KDa.

Dilution

WB~~1:500~1000

E~~N/A

Format

Clear, colorless solution in phosphate buffered saline, pH 7.2 .

Storage

Store at -20°C or lower. Aliquot to avoid repeated freezing and thawing.

Precautions

TTF2 Antibody (monoclonal) (M12) is for research use only and not for use in diagnostic or therapeutic procedures.

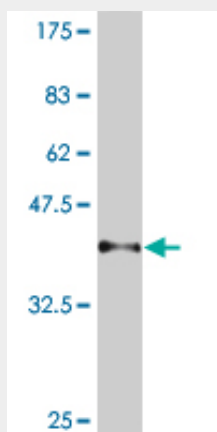
TTF2 Antibody (monoclonal) (M12) - Protocols

Provided below are standard protocols that you may find useful for product applications.

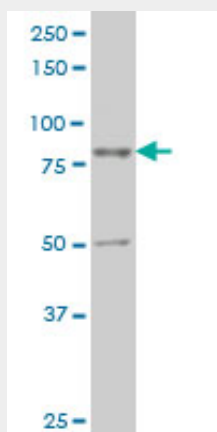
- [Western Blot](#)
- [Blocking Peptides](#)

- [Dot Blot](#)
- [Immunohistochemistry](#)
- [Immunofluorescence](#)
- [Immunoprecipitation](#)
- [Flow Cytometry](#)
- [Cell Culture](#)

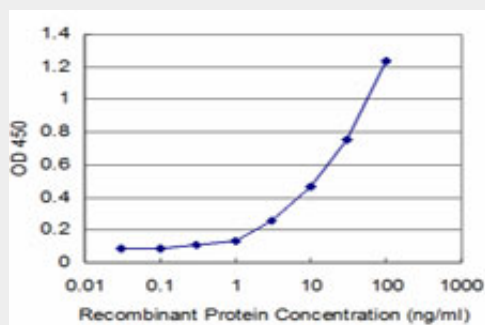
TTF2 Antibody (monoclonal) (M12) - Images



Antibody Reactive Against Recombinant Protein. Western Blot detection against Immunogen (39.75 kDa) .



TTF2 monoclonal antibody (M12), clone 2B6 Western Blot analysis of TTF2 expression in MES-SA/Dx5 ((Cat # AT4390a)



Detection limit for recombinant GST tagged TTF2 is approximately 1ng/ml as a capture antibody.

TTF2 Antibody (monoclonal) (M12) - Background

This gene encodes a member of the SWI2/SNF2 family of proteins, which play a critical role in altering protein-DNA interactions. The encoded protein has been shown to have dsDNA-dependent ATPase activity and RNA polymerase II termination activity. This protein interacts with cell division cycle 5-like, associates with human splicing complexes, and plays a role in pre-mRNA splicing.

TTF2 Antibody (monoclonal) (M12) - References

Toward a confocal subcellular atlas of the human proteome. Barbe L, et al. Mol Cell Proteomics, 2008 Mar. PMID 18029348. The interactome of the histone gene regulatory factor HiNF-P suggests novel cell cycle related roles in transcriptional control and RNA processing. Miele A, et al. J Cell Biochem, 2007 Sep 1. PMID 17577209. The DNA sequence and biological annotation of human chromosome 1. Gregory SG, et al. Nature, 2006 May 18. PMID 16710414. The status, quality, and expansion of the NIH full-length cDNA project: the Mammalian Gene Collection (MGC). Gerhard DS, et al. Genome Res, 2004 Oct. PMID 15489334. Rescue of the TTF2 knockdown phenotype with an siRNA-resistant replacement vector. Jiang Y, et al. Cell Cycle, 2004 Sep. PMID 15467445.