

UBE2A Antibody (monoclonal) (M01)**Mouse monoclonal antibody raised against a full length recombinant UBE2A.****Catalog # AT4427a****Specification**

UBE2A Antibody (monoclonal) (M01) - Product Information

Application	WB
Primary Accession	P49459
Other Accession	BC010175
Reactivity	Human
Host	mouse
Clonality	Monoclonal
Isotype	IgG1 kappa
Calculated MW	17315

UBE2A Antibody (monoclonal) (M01) - Additional Information**Gene ID** 7319**Other Names**

Ubiquitin-conjugating enzyme E2 A, RAD6 homolog A, HR6A, hHR6A, Ubiquitin carrier protein A, Ubiquitin-protein ligase A, UBE2A, RAD6A

Target/Specificity

UBE2A (AAH10175, 1 a.a. ~ 152 a.a) full-length recombinant protein with GST tag. MW of the GST tag alone is 26 KDa.

Dilution

WB~~1:500~1000

Format

Clear, colorless solution in phosphate buffered saline, pH 7.2 .

Storage

Store at -20°C or lower. Aliquot to avoid repeated freezing and thawing.

Precautions

UBE2A Antibody (monoclonal) (M01) is for research use only and not for use in diagnostic or therapeutic procedures.

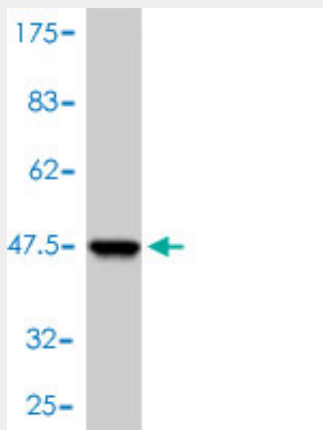
UBE2A Antibody (monoclonal) (M01) - Protocols

Provided below are standard protocols that you may find useful for product applications.

- [Western Blot](#)
- [Blocking Peptides](#)
- [Dot Blot](#)

- [Immunohistochemistry](#)
- [Immunofluorescence](#)
- [Immunoprecipitation](#)
- [Flow Cytometry](#)
- [Cell Culture](#)

UBE2A Antibody (monoclonal) (M01) - Images



Antibody Reactive Against Recombinant Protein. Western Blot detection against Immunogen (42.46 kDa) .

UBE2A Antibody (monoclonal) (M01) - Background

The modification of proteins with ubiquitin is an important cellular mechanism for targeting abnormal or short-lived proteins for degradation. Ubiquitination involves at least three classes of enzymes: ubiquitin-activating enzymes, or E1s, ubiquitin-conjugating enzymes, or E2s, and ubiquitin-protein ligases, or E3s. This gene encodes a member of the E2 ubiquitin-conjugating enzyme family. This enzyme is required for post-replicative DNA damage repair. Multiple alternatively spliced transcript variants have been found for this gene and they encode distinct isoforms.

UBE2A Antibody (monoclonal) (M01) - References

UBE2A, which encodes a ubiquitin-conjugating enzyme, is mutated in a novel X-linked mental retardation syndrome. Nascimento RM, et al. Am J Hum Genet, 2006 Sep. PMID 16909393. The status, quality, and expansion of the NIH full-length cDNA project: the Mammalian Gene Collection (MGC). Gerhard DS, et al. Genome Res, 2004 Oct. PMID 15489334. ZNF198 protein, involved in rearrangement in myeloproliferative disease, forms complexes with the DNA repair-associated HHR6A/6B and RAD18 proteins. Kunapuli P, et al. Oncogene, 2003 May 29. PMID 12776193. Supramolecular complex formation between Rad6 and proteins of the p53 pathway during DNA damage-induced response. Lyakhovich A, et al. Mol Cell Biol, 2003 Apr. PMID 12640129. RFPL4 interacts with oocyte proteins of the ubiquitin-proteasome degradation pathway. Suzumori N, et al. Proc Natl Acad Sci U S A, 2003 Jan 21. PMID 12525704.