

UBE2B Antibody (monoclonal) (M06)

Mouse monoclonal antibody raised against a partial recombinant UBE2B.

Catalog # AT4428a

Specification

UBE2B Antibody (monoclonal) (M06) - Product Information

Application	WB, E
Primary Accession	P63146
Other Accession	NM_003337
Reactivity	Human
Host	mouse
Clonality	Monoclonal
Isotype	IgG2a Kappa
Calculated MW	17312

UBE2B Antibody (monoclonal) (M06) - Additional Information

Gene ID 7320

Other Names

Ubiquitin-conjugating enzyme E2 B, RAD6 homolog B, HR6B, hHR6B, Ubiquitin carrier protein B, Ubiquitin-conjugating enzyme E2-17 kDa, Ubiquitin-protein ligase B, UBE2B, RAD6B

Target/Specificity

UBE2B (NP_003328.1, 63 a.a. ~ 152 a.a) partial recombinant protein with GST tag. MW of the GST tag alone is 26 KDa.

Dilution

WB~~1:500~1000

E~~N/A

Format

Clear, colorless solution in phosphate buffered saline, pH 7.2 .

Storage

Store at -20°C or lower. Aliquot to avoid repeated freezing and thawing.

Precautions

UBE2B Antibody (monoclonal) (M06) is for research use only and not for use in diagnostic or therapeutic procedures.

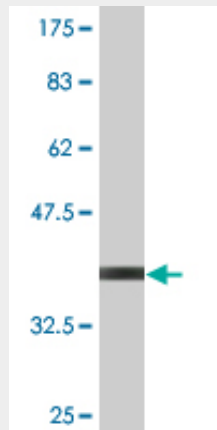
UBE2B Antibody (monoclonal) (M06) - Protocols

Provided below are standard protocols that you may find useful for product applications.

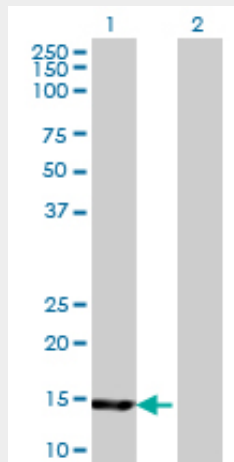
- [Western Blot](#)
- [Blocking Peptides](#)

- [Dot Blot](#)
- [Immunohistochemistry](#)
- [Immunofluorescence](#)
- [Immunoprecipitation](#)
- [Flow Cytometry](#)
- [Cell Culture](#)

UBE2B Antibody (monoclonal) (M06) - Images

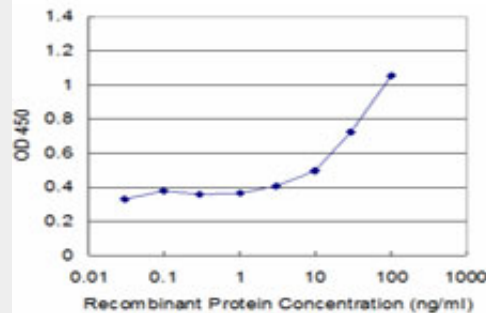


Antibody Reactive Against Recombinant Protein. Western Blot detection against Immunogen (35.64 KDa) .



Western Blot analysis of UBE2B expression in transfected 293T cell line by UBE2B monoclonal antibody (M06), clone 4C3.

Lane 1: UBE2B transfected lysate(17.3 KDa).
Lane 2: Non-transfected lysate.



Detection limit for recombinant GST tagged UBE2B is approximately 3ng/ml as a capture antibody.

UBE2B Antibody (monoclonal) (M06) - Background

The modification of proteins with ubiquitin is an important cellular mechanism for targeting abnormal or short-lived proteins for degradation. Ubiquitination involves at least three classes of enzymes: ubiquitin-activating enzymes, or E1s, ubiquitin-conjugating enzymes, or E2s, and ubiquitin-protein ligases, or E3s. This gene encodes a member of the E2 ubiquitin-conjugating enzyme family. This enzyme is required for post-replicative DNA damage repair. Its protein sequence is 100% identical to the mouse, rat, and rabbit homologs, which indicates that this enzyme is highly conserved in eukaryotic evolution.

UBE2B Antibody (monoclonal) (M06) - References

Evaluation of 172 candidate polymorphisms for association with oligozoospermia or azoospermia in a large cohort of men of European descent. Aston KI, et al. Hum Reprod, 2010 Jun. PMID 20378615. Direct characterization of E2-dependent target specificity and processivity using an artificial p27-linker-E2 ubiquitination system. Ryu KS, et al. BMB Rep, 2008 Dec 31. PMID 19123975. Novel variants in UBE2B gene and idiopathic male infertility. Suryavathi V, et al. J Androl, 2008 Sep-Oct. PMID 18497339. Novel UBE2B-associated polymorphisms in an azoospermic/oligozoospermic population. Huang I, et al. Asian J Androl, 2008 May. PMID 18385908. Recognition of forked and single-stranded DNA structures by human RAD18 complexed with RAD6B protein triggers its recruitment to stalled replication forks. Tsuji Y, et al. Genes Cells, 2008 Apr. PMID 18363965.