

UBE2C Antibody (monoclonal) (M04)

Mouse monoclonal antibody raised against a full length recombinant UBE2C.

Catalog # AT4430a

Specification

UBE2C Antibody (monoclonal) (M04) - Product Information

Application	WB, IF
Primary Accession	O00762
Other Accession	BC050736
Reactivity	Human
Host	mouse
Clonality	Monoclonal
Isotype	IgG2a Kappa
Calculated MW	19652

UBE2C Antibody (monoclonal) (M04) - Additional Information

Gene ID 11065

Other Names

Ubiquitin-conjugating enzyme E2 C, UbcH10, Ubiquitin carrier protein C, Ubiquitin-protein ligase C, UBE2C, UBCH10

Target/Specificity

UBE2C (AAH50736, 1 a.a. ~ 179 a.a) full-length recombinant protein with GST tag. MW of the GST tag alone is 26 KDa.

Dilution

WB~~1:500~1000

IF~~1:50~200

Format

Clear, colorless solution in phosphate buffered saline, pH 7.2 .

Storage

Store at -20°C or lower. Aliquot to avoid repeated freezing and thawing.

Precautions

UBE2C Antibody (monoclonal) (M04) is for research use only and not for use in diagnostic or therapeutic procedures.

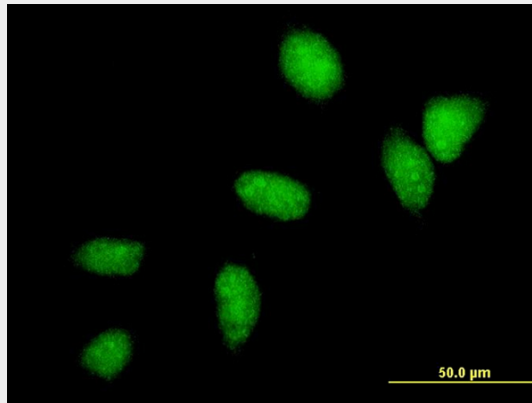
UBE2C Antibody (monoclonal) (M04) - Protocols

Provided below are standard protocols that you may find useful for product applications.

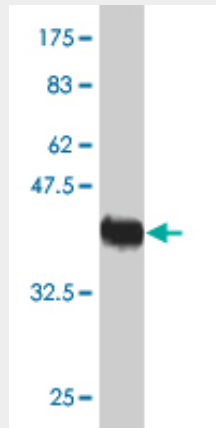
- [Western Blot](#)
- [Blocking Peptides](#)

- [Dot Blot](#)
- [Immunohistochemistry](#)
- [Immunofluorescence](#)
- [Immunoprecipitation](#)
- [Flow Cytometry](#)
- [Cell Culture](#)

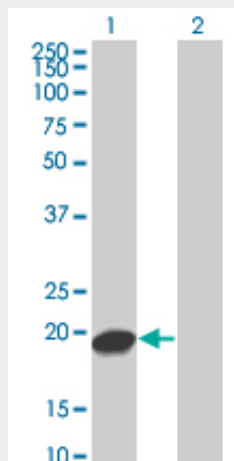
UBE2C Antibody (monoclonal) (M04) - Images



Immunofluorescence of monoclonal antibody to UBE2C on HeLa cell . [antibody concentration 10 ug/ml]



Antibody Reactive Against Recombinant Protein. Western Blot detection against Immunogen (45.43 KDa) .



Western Blot analysis of UBE2C expression in transfected 293T cell line by UBE2C monoclonal antibody (M04), clone 3B1.

Lane 1: UBE2C transfected lysate(19.7 KDa).
Lane 2: Non-transfected lysate.