

UBE2H Antibody (monoclonal) (M01)**Mouse monoclonal antibody raised against a full length recombinant UBE2H.****Catalog # AT4437a****Specification**

UBE2H Antibody (monoclonal) (M01) - Product Information

Application	WB, IF, E
Primary Accession	P62256
Other Accession	BC006277
Reactivity	Human
Host	mouse
Clonality	Monoclonal
Isotype	IgG2a kappa
Calculated MW	20655

UBE2H Antibody (monoclonal) (M01) - Additional Information**Gene ID** 7328**Other Names**

Ubiquitin-conjugating enzyme E2 H, UbcH2, Ubiquitin carrier protein H, Ubiquitin-conjugating enzyme E2-20K, Ubiquitin-protein ligase H, UBE2H

Target/Specificity

UBE2H (AAH06277, 1 a.a. ~ 183 a.a) full-length recombinant protein with GST tag. MW of the GST tag alone is 26 KDa.

Dilution

WB~~1:500~1000

IF~~1:50~200

E~~N/A

Format

Clear, colorless solution in phosphate buffered saline, pH 7.2 .

Storage

Store at -20°C or lower. Aliquot to avoid repeated freezing and thawing.

Precautions

UBE2H Antibody (monoclonal) (M01) is for research use only and not for use in diagnostic or therapeutic procedures.

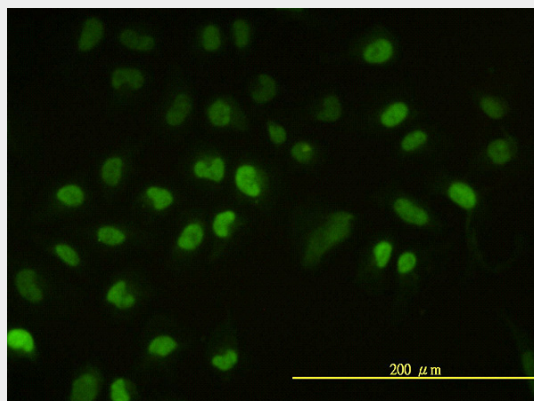
UBE2H Antibody (monoclonal) (M01) - Protocols

Provided below are standard protocols that you may find useful for product applications.

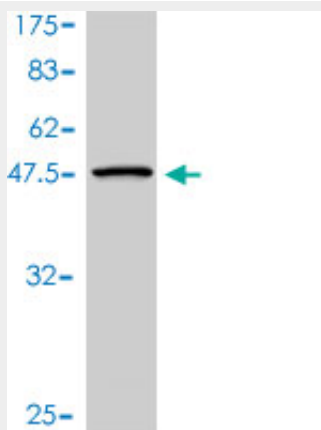
- [Western Blot](#)

- [Blocking Peptides](#)
- [Dot Blot](#)
- [Immunohistochemistry](#)
- [Immunofluorescence](#)
- [Immunoprecipitation](#)
- [Flow Cytometry](#)
- [Cell Culture](#)

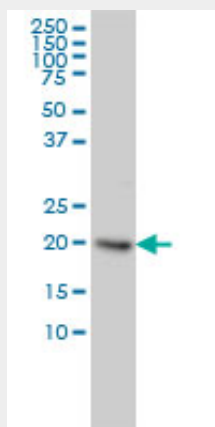
UBE2H Antibody (monoclonal) (M01) - Images



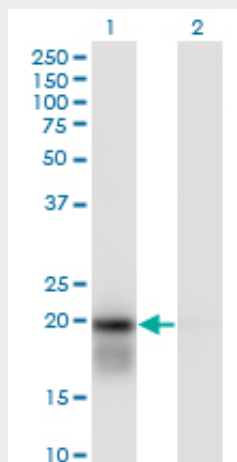
Immunofluorescence of monoclonal antibody to UBE2H on HeLa cell. [antibody concentration 10 ug/ml]



Antibody Reactive Against Recombinant Protein. Western Blot detection against Immunogen (45.87 KDa) .

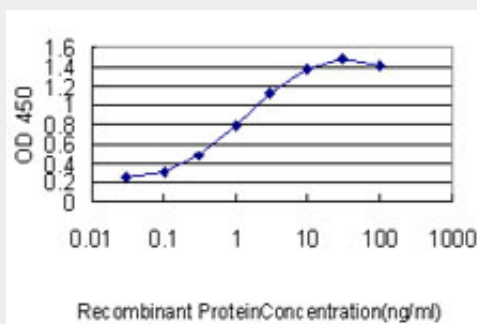


UBE2H monoclonal antibody (M01), clone 3C4-1A2 Western Blot analysis of UBE2H expression in HeLa (Cat # AT4437a)



Western Blot analysis of UBE2H expression in transfected 293T cell line by UBE2H monoclonal antibody (M01), clone 3C4-1A2.

Lane 1: UBE2H transfected lysate(20.7 KDa).
Lane 2: Non-transfected lysate.



Detection limit for recombinant GST tagged UBE2H is approximately 0.03ng/ml as a capture antibody.

UBE2H Antibody (monoclonal) (M01) - Background

The modification of proteins with ubiquitin is an important cellular mechanism for targeting abnormal or short-lived proteins for degradation. Ubiquitination involves at least three classes of enzymes: ubiquitin-activating enzymes, or E1s, ubiquitin-conjugating enzymes, or E2s, and ubiquitin-protein ligases, or E3s. This gene encodes a member of the E2 ubiquitin-conjugating enzyme family. The encoded protein sequence is 100% identical to the mouse homolog and 98% identical to the frog and zebrafish homologs. Two alternatively spliced transcript variants have been found for this gene and they encode distinct isoforms.

UBE2H Antibody (monoclonal) (M01) - References

Targets of the Tal1 transcription factor in erythrocytes: E2 ubiquitin conjugase regulation by Tal1. Lausen J, et al. J Biol Chem, 2010 Feb 19. PMID 20028976. Association study of the ubiquitin conjugating enzyme gene UBE2H in sporadic ALS. Martin I, et al. Amyotroph Lateral Scler, 2009 Oct-Dec. PMID 19922136. A common variant in DRD3 receptor is associated with autism spectrum disorder. de Krom M, et al. Biol Psychiatry, 2009 Apr 1. PMID 19058789. Association study of the ubiquitin conjugating enzyme gene UBE2H in sporadic ALS. Martin I, et al. Amyotroph Lateral Scler,

2008 Oct 14. PMID 18855187. Toward a confocal subcellular atlas of the human proteome. Barbe L, et al. Mol Cell Proteomics, 2008 Mar. PMID 18029348.