

UBE3A Antibody (monoclonal) (M01)**Mouse monoclonal antibody raised against a partial recombinant UBE3A.****Catalog # AT4445a****Specification**

UBE3A Antibody (monoclonal) (M01) - Product Information

Application	WB, IHC, IF, E
Primary Accession	Q05086
Other Accession	BC009271
Reactivity	Human, Rat
Host	mouse
Clonality	Monoclonal
Isotype	IgG2a Kappa
Calculated MW	100688

UBE3A Antibody (monoclonal) (M01) - Additional Information**Gene ID** 7337**Other Names**

Ubiquitin-protein ligase E3A, 632-, E6AP ubiquitin-protein ligase, Human papillomavirus E6-associated protein, Oncogenic protein-associated protein E6-AP, Renal carcinoma antigen NY-REN-54, UBE3A, E6AP, EPVE6AP, HPVE6A

Target/Specificity

UBE3A (AAH09271, 51 a.a. ~ 150 a.a) partial recombinant protein with GST tag. MW of the GST tag alone is 26 KDa.

Dilution

WB~~1:500~1000

IHC~~1:100~500

IF~~1:50~200

E~~N/A

Format

Clear, colorless solution in phosphate buffered saline, pH 7.2 .

Storage

Store at -20°C or lower. Aliquot to avoid repeated freezing and thawing.

Precautions

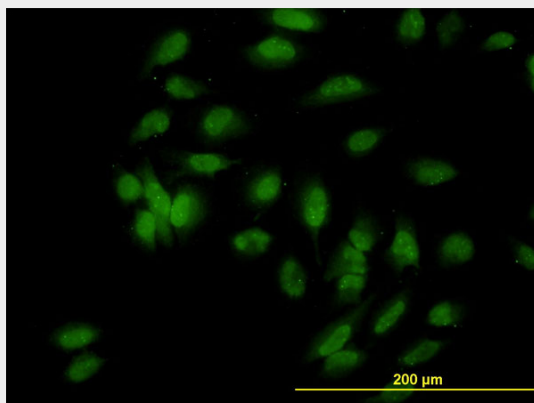
UBE3A Antibody (monoclonal) (M01) is for research use only and not for use in diagnostic or therapeutic procedures.

UBE3A Antibody (monoclonal) (M01) - Protocols

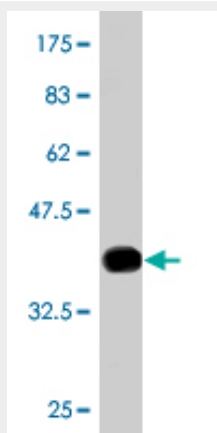
Provided below are standard protocols that you may find useful for product applications.

- [Western Blot](#)
- [Blocking Peptides](#)
- [Dot Blot](#)
- [Immunohistochemistry](#)
- [Immunofluorescence](#)
- [Immunoprecipitation](#)
- [Flow Cytometry](#)
- [Cell Culture](#)

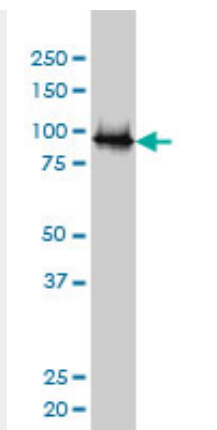
UBE3A Antibody (monoclonal) (M01) - Images



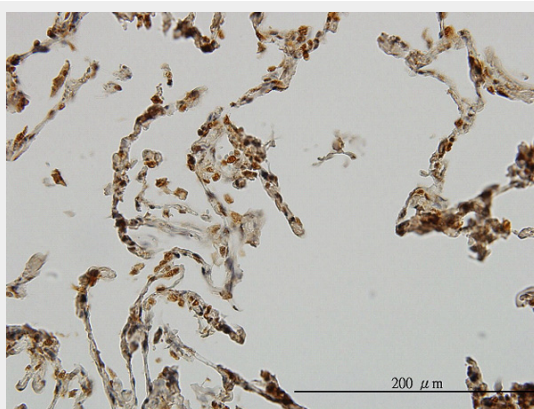
Immunofluorescence of monoclonal antibody to UBE3A on HeLa cell. [antibody concentration 10 ug/ml]



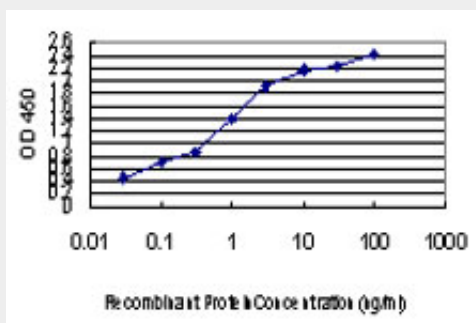
Antibody Reactive Against Recombinant Protein. Western Blot detection against Immunogen (36.74 KDa) .



UBE3A monoclonal antibody (M01), clone 2F6 Western Blot analysis of UBE3A expression in Jurkat (Cat # AT4445a)



Immunoperoxidase of monoclonal antibody to UBE3A on formalin-fixed paraffin-embedded human lung. [antibody concentration 3 ug/ml]



Detection limit for recombinant GST tagged UBE3A is approximately 0.03ng/ml as a capture antibody.

UBE3A Antibody (monoclonal) (M01) - Background

This gene encodes an E3 ubiquitin-protein ligase, part of the ubiquitin protein degradation system. This imprinted gene is maternally expressed in brain and biallelically expressed in other tissues. Maternally inherited deletion of this gene causes Angelman Syndrome, characterized by severe motor and intellectual retardation, ataxia, hypotonia, epilepsy, absence of speech, and characteristic facies. The protein also interacts with the E6 protein of human papillomavirus types 16 and 18, resulting in ubiquitination and proteolysis of tumor protein p53. Alternative splicing of this gene results in three transcript variants encoding three isoforms with different N-termini. Additional transcript variants have been described, but their full length nature has not been determined.

UBE3A Antibody (monoclonal) (M01) - References

1.The E6 proteins from multiple beta HPV types degrade Bak and protect keratinocytes from apoptosis after UVB irradiation.Underbrink MP, Howie HL, Bedard KM, Koop JI, Galloway DA.J Virol. 2008 Nov;82(21):10408-17. Epub 2008 Aug 20.

UBE3A Antibody (monoclonal) (M01) - Citations

- [A fine balance: Regulation of hippocampal Arc/Arg3.1 transcription, translation and degradation in a rat model of normal cognitive aging.](#)