

**VCL Antibody (monoclonal) (M01)****Mouse monoclonal antibody raised against a full length recombinant VCL.****Catalog # AT4505a****Specification**

---

**VCL Antibody (monoclonal) (M01) - Product Information**

Application	WB, IF
Primary Accession	<a href="#">P18206</a>
Other Accession	<a href="#">BC039174</a>
Reactivity	Human
Host	mouse
Clonality	Monoclonal
Isotype	IgG1 kappa
Calculated MW	123799

**VCL Antibody (monoclonal) (M01) - Additional Information****Gene ID** 7414**Other Names**

Vinculin, Metavinculin, MV, VCL

**Target/Specificity**

VCL (AAH39174.1, 1 a.a. ~ 1066 a.a) full-length recombinant protein with GST tag. MW of the GST tag alone is 26 KDa.

**Dilution**

WB~~1:500~1000

IF~~1:50~200

**Format**

Clear, colorless solution in phosphate buffered saline, pH 7.2 .

**Storage**

Store at -20°C or lower. Aliquot to avoid repeated freezing and thawing.

**Precautions**

VCL Antibody (monoclonal) (M01) is for research use only and not for use in diagnostic or therapeutic procedures.

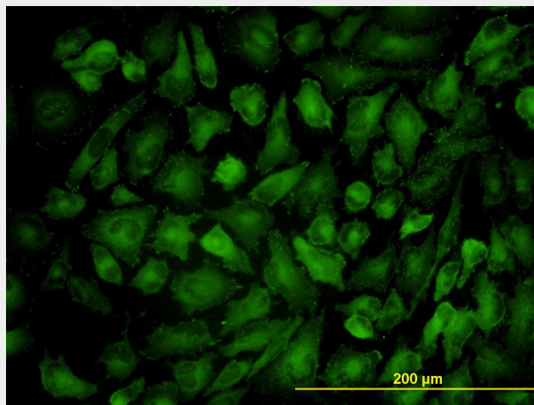
**VCL Antibody (monoclonal) (M01) - Protocols**

Provided below are standard protocols that you may find useful for product applications.

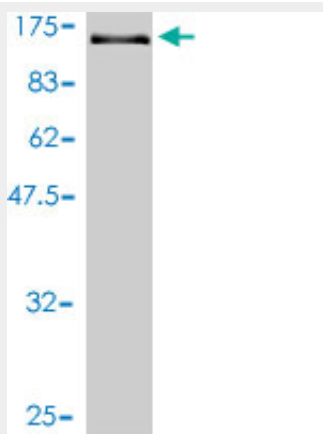
- [Western Blot](#)
- [Blocking Peptides](#)
- [Dot Blot](#)

- [Immunohistochemistry](#)
- [Immunofluorescence](#)
- [Immunoprecipitation](#)
- [Flow Cytometry](#)
- [Cell Culture](#)

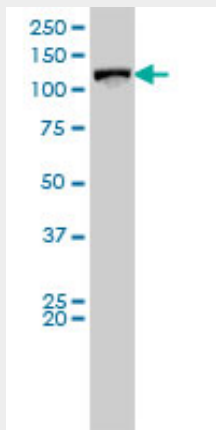
## VCL Antibody (monoclonal) (M01) - Images



Immunofluorescence of monoclonal antibody to VCL on HeLa cell. [antibody concentration 10 ug/ml]



Antibody Reactive Against Recombinant Protein. Western Blot detection against Immunogen (143 KDa) .



VCL monoclonal antibody (M01), clone 2C6-1B5 Western Blot analysis of VCL expression in HeLa (

(Cat # AT4505a )

### **VCL Antibody (monoclonal) (M01) - Background**

Vinculin is a cytoskeletal protein associated with cell-cell and cell-matrix junctions, where it is thought to function as one of several interacting proteins involved in anchoring F-actin to the membrane. Defects in VCL are the cause of cardiomyopathy dilated type 1W. Dilated cardiomyopathy is a disorder characterized by ventricular dilation and impaired systolic function, resulting in congestive heart failure and arrhythmia. Multiple alternatively spliced transcript variants have been found for this gene, but the biological validity of some variants has not been determined.

### **VCL Antibody (monoclonal) (M01) - References**

1. Ascorbylperoxide contaminating parenteral nutrition perturbs the lipid metabolism in newborn guinea pig. Maghdessian R, Cote F, Rouleau T, Ouadda AB, Levy E, Lavoie JC. J Pharmacol Exp Ther. 2010 Apr 7. [Epub ahead of print]