

WDR4 Antibody (monoclonal) (M01)**Mouse monoclonal antibody raised against a full length recombinant WDR4.****Catalog # AT4531a****Specification**

WDR4 Antibody (monoclonal) (M01) - Product Information

Application	WB, IHC, E
Primary Accession	P57081
Other Accession	BC001074
Reactivity	Human
Host	mouse
Clonality	Monoclonal
Isotype	IgG1 Kappa
Calculated MW	45490

WDR4 Antibody (monoclonal) (M01) - Additional Information**Gene ID** 10785**Other Names**

tRNA (guanine-N(7)-)-methyltransferase non-catalytic subunit WDR4
{ECO:0000255|HAMAP-Rule:MF_03056}, WD repeat-containing protein 4
{ECO:0000255|HAMAP-Rule:MF_03056}, WDR4 {ECO:0000255|HAMAP-Rule:MF_03056}

Target/Specificity

WDR4 (AAH01074, 1 a.a. ~ 266 a.a) full-length recombinant protein with GST tag. MW of the GST tag alone is 26 KDa.

Dilution

WB~~1:500~1000

Format

Clear, colorless solution in phosphate buffered saline, pH 7.2 .

Storage

Store at -20°C or lower. Aliquot to avoid repeated freezing and thawing.

Precautions

WDR4 Antibody (monoclonal) (M01) is for research use only and not for use in diagnostic or therapeutic procedures.

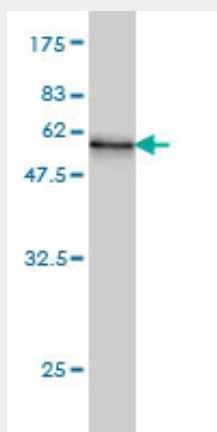
WDR4 Antibody (monoclonal) (M01) - Protocols

Provided below are standard protocols that you may find useful for product applications.

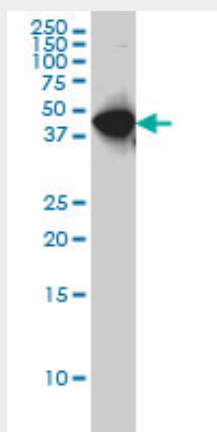
- [Western Blot](#)
- [Blocking Peptides](#)

- [Dot Blot](#)
- [Immunohistochemistry](#)
- [Immunofluorescence](#)
- [Immunoprecipitation](#)
- [Flow Cytometry](#)
- [Cell Culture](#)

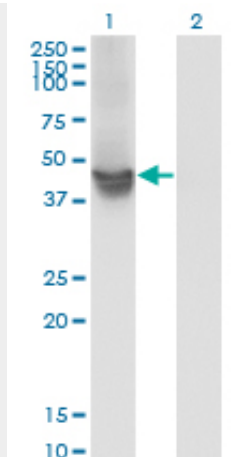
WDR4 Antibody (monoclonal) (M01) - Images



Antibody Reactive Against Recombinant Protein. Western Blot detection against Immunogen (55 kDa) .



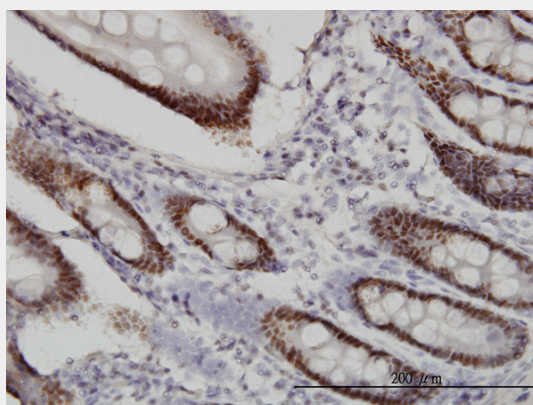
WDR4 monoclonal antibody (M01), clone 1F9 Western Blot analysis of WDR4 expression in HeLa S3 NE ((Cat # AT4531a)



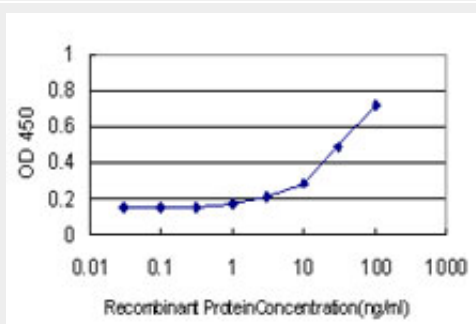
Western Blot analysis of WDR4 expression in transfected 293T cell line by WDR4 monoclonal antibody (M01), clone 1F9.

Lane 1: WDR4 transfected lysate (Predicted MW: 45.5 KDa).

Lane 2: Non-transfected lysate.



Immunoperoxidase of monoclonal antibody to WDR4 on formalin-fixed paraffin-embedded human small Intestine. [antibody concentration 1 ug/ml]



Detection limit for recombinant GST tagged WDR4 is approximately 1ng/ml as a capture antibody.

WDR4 Antibody (monoclonal) (M01) - Background

This gene encodes a member of the WD repeat protein family. WD repeats are minimally conserved regions of approximately 40 amino acids typically bracketed by gly-his and trp-aspartate (GH-WD), which may facilitate formation of heterotrimeric or multiprotein complexes. Members of this family are involved in a variety of cellular processes, including cell cycle progression, signal

transduction, apoptosis, and gene regulation. This gene is excluded as a candidate for a form of nonsyndromic deafness (DFNB10), but is still a candidate for other disorders mapped to 21q22.3 as well as for the development of Down syndrome phenotypes. Two transcript variants encoding the same protein have been found for this gene.

WDR4 Antibody (monoclonal) (M01) - References

Toward a confocal subcellular atlas of the human proteome. Barbe L, et al. Mol Cell Proteomics, 2008 Mar. PMID 18029348. Global, in vivo, and site-specific phosphorylation dynamics in signaling networks. Olsen JV, et al. Cell, 2006 Nov 3. PMID 17081983. Cell array-based intracellular localization screening reveals novel functional features of human chromosome 21 proteins. Hu YH, et al. BMC Genomics, 2006 Jun 16. PMID 16780588. Towards a proteome-scale map of the human protein-protein interaction network. Rual JF, et al. Nature, 2005 Oct 20. PMID 16189514. The tRNA methylase METTL1 is phosphorylated and inactivated by PKB and RSK in vitro and in cells. Cartledge RA, et al. EMBO J, 2005 May 4. PMID 15861136.