

**WIPI1 Antibody (monoclonal) (M02)****Mouse monoclonal antibody raised against a partial recombinant WIPI1.****Catalog # AT4539a****Specification**

---

**WIPI1 Antibody (monoclonal) (M02) - Product Information**

Application	WB, E
Primary Accession	<a href="#">Q5MNZ9</a>
Other Accession	<a href="#">NM_017983</a>
Reactivity	Human, Rat
Host	mouse
Clonality	Monoclonal
Isotype	IgG2b Kappa
Calculated MW	48673

**WIPI1 Antibody (monoclonal) (M02) - Additional Information****Gene ID** 55062**Other Names**

WD repeat domain phosphoinositide-interacting protein 1, WIPI-1, Atg18 protein homolog, WD40 repeat protein interacting with phosphoinositides of 49 kDa, WIPI 49 kDa, WIPI1, WIPI49

**Target/Specificity**

WIPI1 (NP\_060453.2, 348 a.a. ~ 445 a.a) partial recombinant protein with GST tag. MW of the GST tag alone is 26 KDa.

**Dilution**

WB~~1:500~1000

E~~N/A

**Format**

Clear, colorless solution in phosphate buffered saline, pH 7.2 .

**Storage**

Store at -20°C or lower. Aliquot to avoid repeated freezing and thawing.

**Precautions**

WIPI1 Antibody (monoclonal) (M02) is for research use only and not for use in diagnostic or therapeutic procedures.

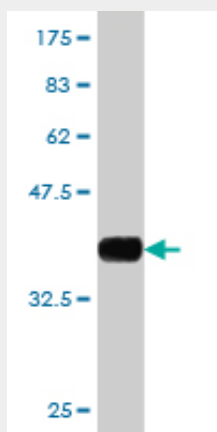
**WIPI1 Antibody (monoclonal) (M02) - Protocols**

Provided below are standard protocols that you may find useful for product applications.

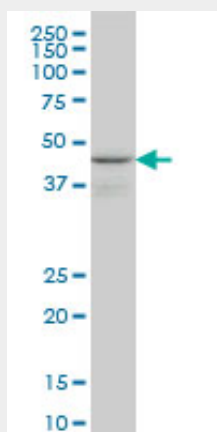
- [Western Blot](#)
- [Blocking Peptides](#)

- [Dot Blot](#)
- [Immunohistochemistry](#)
- [Immunofluorescence](#)
- [Immunoprecipitation](#)
- [Flow Cytometry](#)
- [Cell Culture](#)

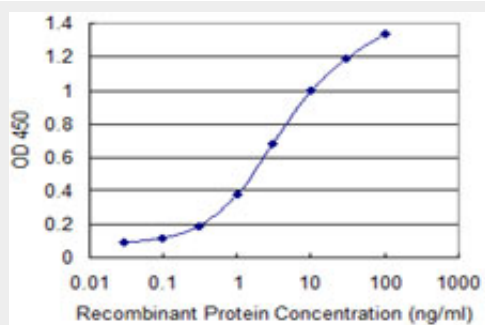
## WIPI1 Antibody (monoclonal) (M02) - Images



Antibody Reactive Against Recombinant Protein. Western Blot detection against Immunogen (36.52 kDa) .



WIPI1 monoclonal antibody (M02), clone 3C1 Western Blot analysis of WIPI1 expression in PC-12 (Cat # AT4539a )



Detection limit for recombinant GST tagged WIPI1 is 0.03 ng/ml as a capture antibody.

## WIPI1 Antibody (monoclonal) (M02) - Background

WD40 repeat proteins are key components of many essential biologic functions. They regulate the assembly of multiprotein complexes by presenting a beta-propeller platform for simultaneous and reversible protein-protein interactions. Members of the WIPI subfamily of WD40 repeat proteins, such as WIPI1, have a 7-bladed propeller structure and contain a conserved motif for interaction with phospholipids (Proikas-Cezanne et al., 2004 [PubMed 15602573]).

#### **WIPI1 Antibody (monoclonal) (M02) - References**

Forty-three loci associated with plasma lipoprotein size, concentration, and cholesterol content in genome-wide analysis. Chasman DI, et al. PLoS Genet, 2009 Nov. PMID 19936222. Human WIPI-1 puncta-formation: a novel assay to assess mammalian autophagy. Proikas-Cezanne T, et al. FEBS Lett, 2007 Jul 24. PMID 17618624. A human protein-protein interaction network: a resource for annotating the proteome. Stelzl U, et al. Cell, 2005 Sep 23. PMID 16169070. WIPI-1alpha (WIPI49), a member of the novel 7-bladed WIPI protein family, is aberrantly expressed in human cancer and is linked to starvation-induced autophagy. Proikas-Cezanne T, et al. Oncogene, 2004 Dec 16. PMID 15602573. The status, quality, and expansion of the NIH full-length cDNA project: the Mammalian Gene Collection (MGC). Gerhard DS, et al. Genome Res, 2004 Oct. PMID 15489334.