

ZFP36L1 Antibody (monoclonal) (M02)**Mouse monoclonal antibody raised against a partial recombinant ZFP36L1.****Catalog # AT4574a****Specification**

ZFP36L1 Antibody (monoclonal) (M02) - Product Information

Application	WB, E
Primary Accession	Q07352
Other Accession	NM_004926
Reactivity	Human
Host	mouse
Clonality	Monoclonal
Isotype	IgG1 Kappa
Calculated MW	36314

ZFP36L1 Antibody (monoclonal) (M02) - Additional Information**Gene ID** 677**Other Names**

Zinc finger protein 36, C3H1 type-like 1, Butyrate response factor 1, EGF-response factor 1, ERF-1, Protein TIS11B, ZFP36L1, BERG36, BRF1, ERF1, RNF162B, TIS11B

Target/Specificity

ZFP36L1 (NP_004917, 1 a.a. ~ 108 a.a) partial recombinant protein with GST tag. MW of the GST tag alone is 26 KDa.

Dilution

WB~~1:500~1000

E~~N/A

Format

Clear, colorless solution in phosphate buffered saline, pH 7.2 .

Storage

Store at -20°C or lower. Aliquot to avoid repeated freezing and thawing.

Precautions

ZFP36L1 Antibody (monoclonal) (M02) is for research use only and not for use in diagnostic or therapeutic procedures.

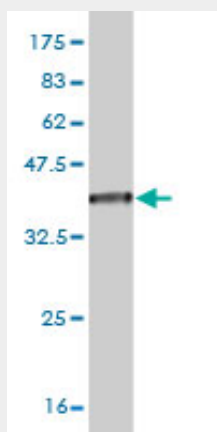
ZFP36L1 Antibody (monoclonal) (M02) - Protocols

Provided below are standard protocols that you may find useful for product applications.

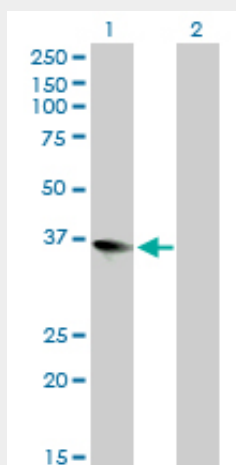
- [Western Blot](#)
- [Blocking Peptides](#)

- [Dot Blot](#)
- [Immunohistochemistry](#)
- [Immunofluorescence](#)
- [Immunoprecipitation](#)
- [Flow Cytometry](#)
- [Cell Culture](#)

ZFP36L1 Antibody (monoclonal) (M02) - Images

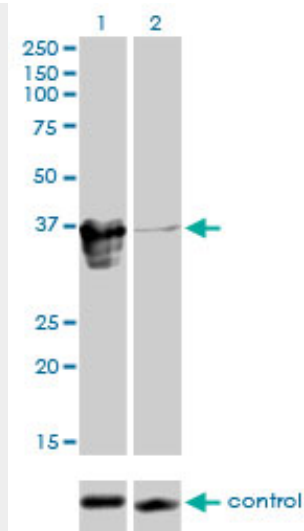


Antibody Reactive Against Recombinant Protein. Western Blot detection against Immunogen (37.62 KDa) .

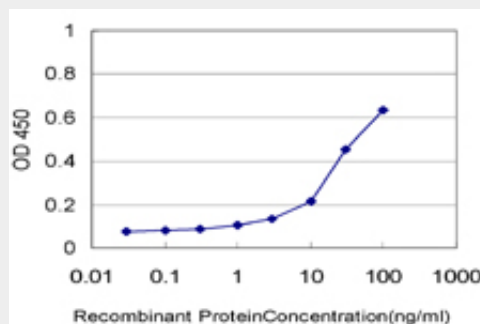


Western Blot analysis of ZFP36L1 expression in transfected 293T cell line by ZFP36L1 monoclonal antibody (M02), clone 1A3.

Lane 1: ZFP36L1 transfected lysate (36.3 KDa).
Lane 2: Non-transfected lysate.



Western blot analysis of ZFP36L1 over-expressed 293 cell line, cotransfected with ZFP36L1 Validated Chimera RNAi (Cat # AT4574a)



Detection limit for recombinant GST tagged ZFP36L1 is approximately 1ng/ml as a capture antibody.

ZFP36L1 Antibody (monoclonal) (M02) - Background

This gene is a member of the TIS11 family of early response genes. Family members are induced by various agonists such as the phorbol ester TPA and the polypeptide mitogen EGF. The gene is well conserved across species and has a promoter that contains motifs seen in other early-response genes. The encoded protein contains a distinguishing putative zinc finger domain with a repeating cys-his motif. This putative nuclear transcription factor most likely functions in regulating the response to growth factors.

ZFP36L1 Antibody (monoclonal) (M02) - References

Multiple common variants for celiac disease influencing immune gene expression. Dubois PC, et al. Nat Genet, 2010 Apr. PMID 20190752. ZFP36L1 is regulated by growth factors and cytokines in keratinocytes and influences their VEGF production. Hacker C, et al. Growth Factors, 2010 Jun. PMID 20166898. Von Hippel-Lindau gene product modulates TIS11B expression in renal cell carcinoma: impact on vascular endothelial growth factor expression in hypoxia. Sinha S, et al. J Biol Chem, 2009 Nov 20. PMID 19801654. Structural insights into eRF3 and stop codon recognition by eRF1. Cheng Z, et al. Genes Dev, 2009 May 1. PMID 19417105. Involvement of Tis11b, an AU-rich binding protein, in induction of apoptosis by rituximab in B cell chronic lymphocytic leukemia cells. Baou M, et al. Leukemia, 2009 May. PMID 19092855.