

**ZIC1 Antibody (monoclonal) (M01)****Mouse monoclonal antibody raised against a partial recombinant ZIC1.****Catalog # AT4578a****Specification**

---

**ZIC1 Antibody (monoclonal) (M01) - Product Information**

Application	WB, E
Primary Accession	<a href="#">Q15915</a>
Other Accession	<a href="#">NM_003412</a>
Reactivity	Human
Host	mouse
Clonality	Monoclonal
Isotype	IgG
Calculated MW	48309

**ZIC1 Antibody (monoclonal) (M01) - Additional Information****Gene ID** 7545**Other Names**

Zinc finger protein ZIC 1, Zinc finger protein 201, Zinc finger protein of the cerebellum 1, ZIC1, ZIC, ZNF201

**Target/Specificity**

ZIC1 (NP\_003403, 2 a.a. ~ 95 a.a) partial recombinant protein with GST tag. MW of the GST tag alone is 26 KDa.

**Dilution**

WB~~1:500~1000

E~~N/A

**Format**

Clear, colorless solution in phosphate buffered saline, pH 7.2 .

**Storage**

Store at -20°C or lower. Aliquot to avoid repeated freezing and thawing.

**Precautions**

ZIC1 Antibody (monoclonal) (M01) is for research use only and not for use in diagnostic or therapeutic procedures.

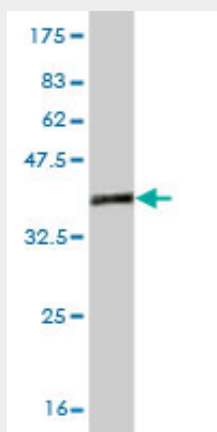
**ZIC1 Antibody (monoclonal) (M01) - Protocols**

Provided below are standard protocols that you may find useful for product applications.

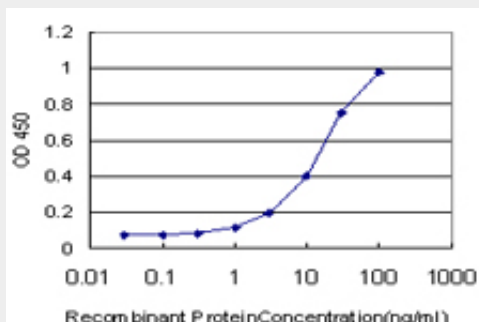
- [Western Blot](#)
- [Blocking Peptides](#)

- [Dot Blot](#)
- [Immunohistochemistry](#)
- [Immunofluorescence](#)
- [Immunoprecipitation](#)
- [Flow Cytometry](#)
- [Cell Culture](#)

### ZIC1 Antibody (monoclonal) (M01) - Images



Antibody Reactive Against Recombinant Protein. Western Blot detection against Immunogen (36.08 KDa) .



Detection limit for recombinant GST tagged ZIC1 is approximately 0.3ng/ml as a capture antibody.

### ZIC1 Antibody (monoclonal) (M01) - Background

This gene encodes a member of the ZIC family of C2H2-type zinc finger proteins. Members of this family are important during development. Aberrant expression of this gene is seen in medulloblastoma, a childhood brain tumor. This gene is closely linked to the gene encoding zinc finger protein of the cerebellum 4, a related family member on chromosome 3. This gene encodes a transcription factor that can bind and transactivate the apolipoprotein E gene.

### ZIC1 Antibody (monoclonal) (M01) - References

ZIC1 is downregulated through promoter hypermethylation in gastric cancer. Wang LJ, et al. Biochem Biophys Res Commun, 2009 Feb 20. PMID 19135984. Genome-wide association analysis of susceptibility and clinical phenotype in multiple sclerosis. Baranzini SE, et al. Hum Mol Genet, 2009 Feb 15. PMID 19010793. Inhibition of translation in living eukaryotic cells by an RNA G-quadruplex motif. Arora A, et al. RNA, 2008 Jul. PMID 18515550. Toward a confocal subcellular atlas of the human proteome. Barbe L, et al. Mol Cell Proteomics, 2008 Mar. PMID 18029348. ZIC1 gene expression is controlled by DNA and histone methylation in mesenchymal proliferations.

Pourebrahim R, et al. FEBS Lett, 2007 Oct 30. PMID 17936758.