

ZWINT Antibody (monoclonal) (M01)**Mouse monoclonal antibody raised against a full length recombinant ZWINT.****Catalog # AT4651a****Specification**

ZWINT Antibody (monoclonal) (M01) - Product Information

Application	WB, IF, E
Primary Accession	O95229
Other Accession	BC020979
Reactivity	Human
Host	mouse
Clonality	Monoclonal
Isotype	IgG2a Kappa
Calculated MW	31293

ZWINT Antibody (monoclonal) (M01) - Additional Information**Gene ID** 11130**Other Names**

ZW10 interactor, ZW10-interacting protein 1, Zwint-1, ZWINT

Target/Specificity

ZWINT (AAH20979, 1 a.a. ~ 277 a.a) full-length recombinant protein with GST tag. MW of the GST tag alone is 26 KDa.

Dilution

WB~~1:500~1000

IF~~1:50~200

E~~N/A

Format

Clear, colorless solution in phosphate buffered saline, pH 7.2 .

Storage

Store at -20°C or lower. Aliquot to avoid repeated freezing and thawing.

Precautions

ZWINT Antibody (monoclonal) (M01) is for research use only and not for use in diagnostic or therapeutic procedures.

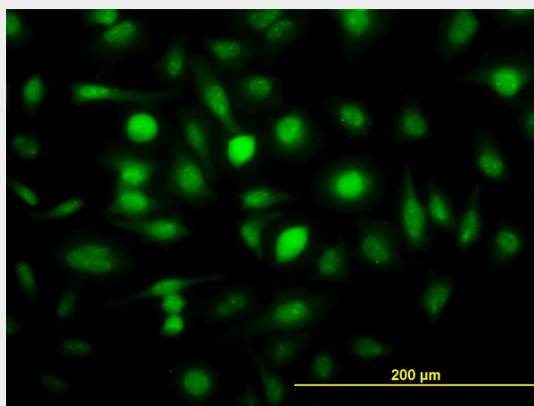
ZWINT Antibody (monoclonal) (M01) - Protocols

Provided below are standard protocols that you may find useful for product applications.

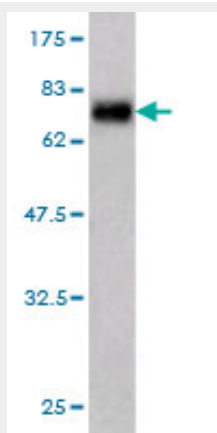
- [Western Blot](#)
- [Blocking Peptides](#)

- [Dot Blot](#)
- [Immunohistochemistry](#)
- [Immunofluorescence](#)
- [Immunoprecipitation](#)
- [Flow Cytometry](#)
- [Cell Culture](#)

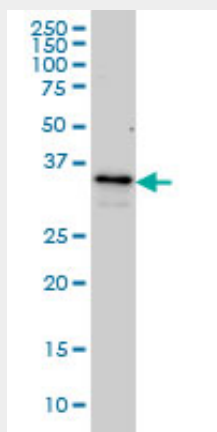
ZWINT Antibody (monoclonal) (M01) - Images



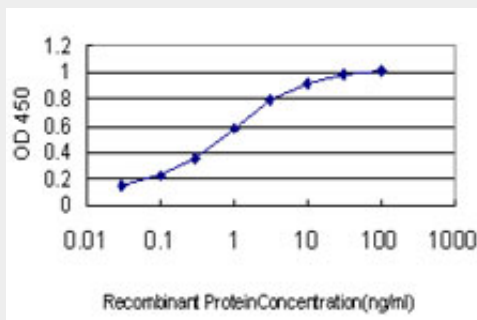
Immunofluorescence of monoclonal antibody to ZWINT on HeLa cell. [antibody concentration 10 ug/ml]



Antibody Reactive Against Recombinant Protein. Western Blot detection against Immunogen (56.21 KDa) .



ZWINT monoclonal antibody (M01), clone 6D3 Western Blot analysis of ZWINT expression in Hela S3 NE ((Cat # AT4651a)



Detection limit for recombinant GST tagged ZWINT is approximately 0.03ng/ml as a capture antibody.

ZWINT Antibody (monoclonal) (M01) - Background

This gene encodes a protein that is clearly involved in kinetochore function although an exact role is not known. It interacts with ZW10, another kinetochore protein, possibly regulating the association between ZW10 and kinetochores. The encoded protein localizes to prophase kinetochores before ZW10 does and it remains detectable on the kinetochore until late anaphase. It has a uniform distribution in the cytoplasm of interphase cells. Alternatively spliced transcript variants encoding different isoforms have been found for this gene.

ZWINT Antibody (monoclonal) (M01) - References

Single nucleotide polymorphisms in chromosomal instability genes and risk and clinical outcome of breast cancer: a Swedish prospective case-control study. Brendle A, et al. Eur J Cancer, 2009 Feb. PMID 19008095. Stable hZW10 kinetochore residency, mediated by hZwint-1 interaction, is essential for the mitotic checkpoint. Famulski JK, et al. J Cell Biol, 2008 Feb 11. PMID 18268100. Association studies of 23 positional/functional candidate genes on chromosome 10 in late-onset Alzheimer's disease. Morgan AR, et al. Am J Med Genet B Neuropsychiatr Genet, 2007 Sep 5. PMID 17373700. Hec1 sequentially recruits Zwint-1 and ZW10 to kinetochores for faithful chromosome segregation and spindle checkpoint control. Lin YT, et al. Oncogene, 2006 Nov 2. PMID 16732327. ZW10 links mitotic checkpoint signaling to the structural kinetochore. Kops GJ, et al. J Cell Biol, 2005 Apr 11. PMID 15824131.