

**APC Anti-Human CD8a (RPA-T8) Antibody**  
**Catalog # ATB10011****Specification**

---

**APC Anti-Human CD8a (RPA-T8) Antibody - Product Information**

Application	FC
Isotype	Mouse IgG1, kappa
Concentration	5 uL (0.25 ug)/test
Reactivity	Human
Formulation	10 mM NaH <sub>2</sub> PO <sub>4</sub> , 150 mM NaCl, 0.09% Na <sub>2</sub> S <sub>2</sub> O <sub>3</sub> , 0.1% gelatin, pH7.2
Host	Mouse

**APC Anti-Human CD8a (RPA-T8) Antibody - Additional Information**

Gene ID	925
Gene Name	CD8A
Alternative Name(s)	
CD8 alpha, leu-2a	

**Format**  
APC**Preparation**

This monoclonal antibody was purified from tissue culture supernatant via affinity chromatography. The purified antibody was conjugated under optimal conditions, with unreacted dye removed from the preparation. It is recommended to store the product undiluted at 4°C, and protected from prolonged exposure to light. Do not freeze.

**Application Notes**

This antibody preparation has been pre-titrated and quality-tested for flow cytometry using an appropriate cell type. The antibody has been diluted for use at 5 uL per test, defined as the amount of antibody that will stain a cell sample in a final volume of approximately 100 uL. The number of cells within a sample should be determined empirically, but typically ranges between 1x10<sup>5</sup> to 1x10<sup>8</sup> cells.

**Storage Conditions**

2-8°C protected from light

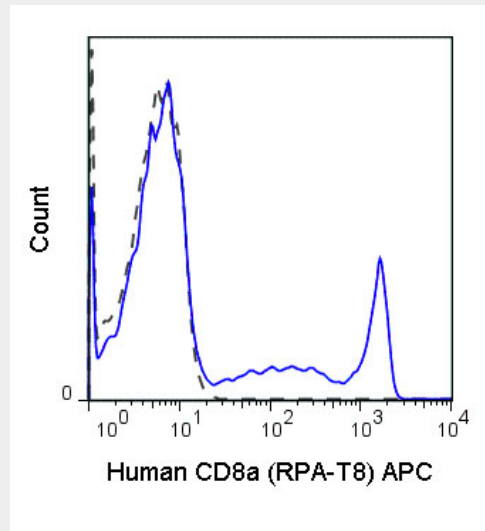
**APC Anti-Human CD8a (RPA-T8) Antibody - Protocols**

Provided below are standard protocols that you may find useful for product applications.

- [Western Blot](#)
- [Blocking Peptides](#)
- [Dot Blot](#)
- [Immunohistochemistry](#)
- [Immunofluorescence](#)

- [Immunoprecipitation](#)
- [Flow Cytometry](#)
- [Cell Culture](#)

#### **APC Anti-Human CD8a (RPA-T8) Antibody - Images**



Human peripheral blood lymphocytes were stained with 5 uL (0.25 ug) Anti-Human CD8a APC (ATB10011) (solid line) or 0.25 ug Mouse IgG1 APC isotype control.

#### **APC Anti-Human CD8a (RPA-T8) Antibody - Background**

The RPA-T8 antibody is specific for the 32-34 kDa alpha chain of human CD8, known as CD8a or CD8 alpha. CD8a can form a homodimer (CD8 alpha-alpha), but is more commonly expressed as a heterodimer with a second chain known as CD8b or CD8 beta. CD8 acts as a co-receptor for antigen recognition and subsequent T cell activation that is initiated upon binding of the T cell receptor (TCR) to antigen-bearing MHC Class I molecules. The cytoplasmic domains of CD8 provide binding sites for the tyrosine kinase lck, facilitating intracellular signaling events that lead to T cell activation, development, and cytotoxic effector functions. CD8+ cytotoxic T cells (CTLs) play an important role in inducing cell death of tumor cells, as well as cells infected by virus, bacteria or parasites. The RPA-T8 antibody is widely used as a phenotypic marker for CD8 on cytotoxic T cells, thymocytes, as well as on certain cell types that do not also express the TCR, including some NK cells and lymphoid dendritic cells. It is cross-reactive with CD8 in several non-human species, including Baboon, Chimpanzee, Cynomolgus and Rhesus. If used together with an alternative Anti-Human CD8a clone, Hit8a, the RPA-T8 antibody will not block binding of Hit8a to CD8a.