

APC Anti-Mouse CD25 (PC61.5) Antibody
Catalog # ATB10018**Specification**

APC Anti-Mouse CD25 (PC61.5) Antibody - Product Information

Application	FC
Isotype	Rat IgG1, lambda
Concentration	0.2 mg/mL
Reactivity	Mouse
Formulation	10 mM NaH ₂ PO ₄ , 150 mM NaCl, 0.09% Na ₂ S ₂ O ₃ , 0.1% gelatin, pH7.2
Host	Rat

APC Anti-Mouse CD25 (PC61.5) Antibody - Additional Information

Gene ID	16184
Gene Name	IL2ra

Alternative Name(s)Interleukin-2 Receptor alpha, IL-2R α , Ly-43, p55, Tac**Format**

APC

Preparation

This monoclonal antibody was purified from tissue culture supernatant via affinity chromatography. The purified antibody was conjugated under optimal conditions, with unreacted dye removed from the preparation. It is recommended to store the product undiluted at 4°C, and protected from prolonged exposure to light. Do not freeze.

Application Notes

This antibody preparation has been quality-tested for flow cytometry using mouse spleen cells, or an appropriate cell type (where indicated). The amount of antibody required for optimal staining of a cell sample should be determined empirically in your system.

Storage Conditions

2-8°C protected from light

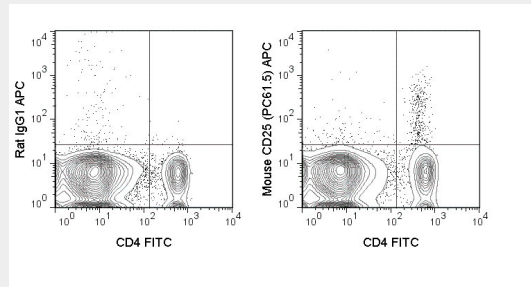
APC Anti-Mouse CD25 (PC61.5) Antibody - Protocols

Provided below are standard protocols that you may find useful for product applications.

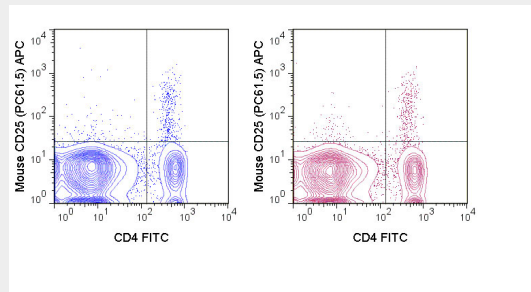
- [Western Blot](#)
- [Blocking Peptides](#)
- [Dot Blot](#)
- [Immunohistochemistry](#)
- [Immunofluorescence](#)
- [Immunoprecipitation](#)
- [Flow Cytometry](#)

- [Cell Culture](#)

APC Anti-Mouse CD25 (PC61.5) Antibody - Images



C57Bl/6 splenocytes were stained with FITC Anti-Mouse CD4 (35-0041) and 0.125 ug APC Anti-Mouse CD25 (ATB10018) (right panel) or 0.125 ug APC Rat IgG1 (left panel).



C57Bl/6 splenocytes were stained with Anti-Mouse CD4 FITC and 0.125 ug APC Anti-Mouse CD25 (PC61.5) manufactured by Tonbo Biosciences (left panel) or eBioscience (right panel).

APC Anti-Mouse CD25 (PC61.5) Antibody - Background

The PC61.5 antibody is specific for mouse CD25, a 55 kDa surface protein also known as the Interleukin-2 Receptor alpha chain, or IL-2R alpha. CD25 may bind IL-2 by itself, although with low affinity and without induction of cell signaling. CD25 is also expressed within a high-affinity complex, along with the IL-2R beta chain (CD122) and the common gamma chain (CD132), to form a signaling receptor complex. Expression of CD25 varies during developmental stages of T and B cells, is induced on activated mature T and B cells, and is present on subsets of dendritic cells. CD25 signaling as part of the IL-2 receptor complex triggers T cell activation and proliferation, as well as modulating the differentiation and function of Th17 cells, T regulatory (Treg) cells, and dendritic cells. The PC61.5 antibody is used as a marker for T cells, B cells and dendritic cell subsets. Expression of CD25, CD4 and the transcription factor Foxp3 is regarded as a phenotypic signature for Treg cells. As such, this antibody is widely used for depletion of Treg cells in vivo, as well as to distinguish Treg cells from naïve or conventional T cells which are CD25-.