

APC-Cy7 Anti-Mouse Ly-6G (1A8) Antibody
Catalog # ATB10071**Specification**

APC-Cy7 Anti-Mouse Ly-6G (1A8) Antibody - Product Information

| | |
|---------------|--|
| Application | FC |
| Isotype | Rat IgG2a, kappa |
| Concentration | 0.2 mg/mL |
| Reactivity | Mouse |
| Formulation | 10 mM NaH ₂ PO ₄ , 150 mM NaCl, 0.09% NaN ₃ , 0.1% gelatin, pH7.2 |
| Host | Rat |

APC-Cy7 Anti-Mouse Ly-6G (1A8) Antibody - Additional Information

| | |
|---------------------|--------|
| Gene ID | 546644 |
| Alternative Name(s) | |
| Gr-1 | |

Format
APC-Cy7**Preparation**

This monoclonal antibody preparation was purified from tissue culture supernatant via affinity chromatography. For In Vivo Ready™ (IVR) products, each preparation is also evaluated for endotoxin levels using the LAL assay. It is recommended to store the product undiluted at 4°C. Do not freeze.

Application Notes

This antibody preparation has been quality-tested for flow cytometry using mouse spleen cells, or an appropriate cell type (where indicated). The amount of antibody required for optimal staining of a cell sample should be determined empirically in your system.

Storage Conditions

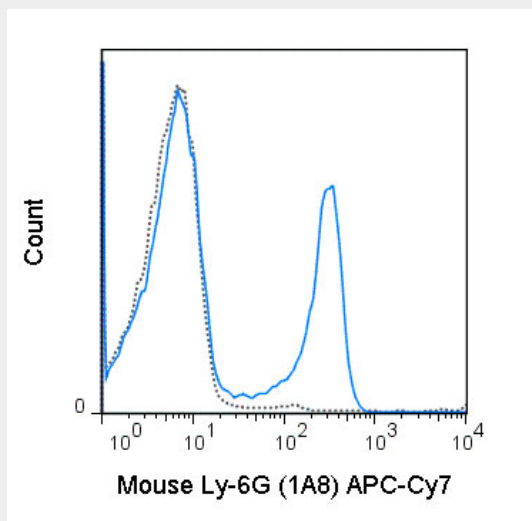
2-8°C protected from light

APC-Cy7 Anti-Mouse Ly-6G (1A8) Antibody - Protocols

Provided below are standard protocols that you may find useful for product applications.

- [Western Blot](#)
- [Blocking Peptides](#)
- [Dot Blot](#)
- [Immunohistochemistry](#)
- [Immunofluorescence](#)
- [Immunoprecipitation](#)
- [Flow Cytometry](#)
- [Cell Culture](#)

APC-Cy7 Anti-Mouse Ly-6G (1A8) Antibody - Images



C57Bl/6 bone marrow cells were stained with 0.5 ug APC-Cy7 Anti-Mouse Ly-6G (ATB10071) (solid line) or 0.5 ug APC-Cy7 Rat IgG2a isotype control (dashed line).

APC-Cy7 Anti-Mouse Ly-6G (1A8) Antibody - Background

The 1A8 antibody binds to mouse Ly-6G, commonly known as Gr-1, a member of the Ly-6 superfamily of GPI-anchored cell surface proteins with roles in cell signaling and cell adhesion. Gr-1 is differentially expressed during development and maturation of cells in the myeloid lineage and is expression at varying stages and levels on monocytes, macrophages, granulocytes, and peripheral neutrophils. In the mouse, the 1A8 antibody is typically used in combination with the macrophage labeling antibody M1/70 (Anti-CD11b) for phenotypic analysis of monocytes, macrophages and granulocytes. Note: for identification of Ly-6C, an alternative antibody, clone RB6-8C5, has been reported to cross-react with Ly-6C on cells expressing this antigen (Fleming et al. 1993. J. Immunol. 151:2399-2408 and Sasmono et al. 2007. J. Leukoc. Biol. 82: 111-123) and has been cited in the literature for identification of Ly-6G/Ly-6C.