

Biotin Anti-Human/Mouse CD45R (B220) (RA3-6B2) Antibody
Catalog # ATB10078**Specification****Biotin Anti-Human/Mouse CD45R (B220) (RA3-6B2) Antibody - Product Information**

Application	FC
Isotype	Rat IgG2a, kappa
Concentration	0.5 mg/mL
Reactivity	Human, Mouse
Formulation	10 mM NaH ₂ PO ₄ , 150 mM NaCl, 0.09% NaN ₃ , 0.1% gelatin, pH7.2
Host	Rat

Biotin Anti-Human/Mouse CD45R (B220) (RA3-6B2) Antibody - Additional Information

Gene ID	19264
Alternative Name(s)	
Ly-5, Lyt-4, T200	

Format
Biotin**Preparation**

This monoclonal antibody was purified from tissue culture supernatant via affinity chromatography. The purified antibody was conjugated under optimal conditions, with unreacted dye removed from the preparation. It is recommended to store the product undiluted at 4°C, and protected from prolonged exposure to light. Do not freeze.

Application Notes

This antibody preparation has been quality-tested for flow cytometry using mouse spleen cells, or an appropriate cell type (where indicated). The amount of antibody required for optimal staining of a cell sample should be determined empirically in your system.

Storage Conditions

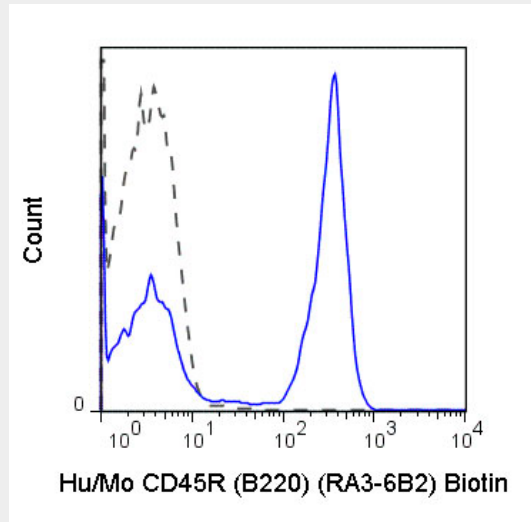
2-8°C protected from light

Biotin Anti-Human/Mouse CD45R (B220) (RA3-6B2) Antibody - Protocols

Provided below are standard protocols that you may find useful for product applications.

- [Western Blot](#)
- [Blocking Peptides](#)
- [Dot Blot](#)
- [Immunohistochemistry](#)
- [Immunofluorescence](#)
- [Immunoprecipitation](#)
- [Flow Cytometry](#)
- [Cell Culture](#)

Biotin Anti-Human/Mouse CD45R (B220) (RA3-6B2) Antibody - Images



C57Bl/6 splenocytes were stained with 0.06 ug Anti-Hu/Mo CD45R (B220) Biotin (ATB10078) (solid line) or 0.06 ug Rat IgG2a Biotin isotype control (dashed line), followed by Streptavidin FITC.

Biotin Anti-Human/Mouse CD45R (B220) (RA3-6B2) Antibody - Background

The RA3-6B2 antibody reacts with the human and mouse CD45 isoform known as CD45R, or B220, a protein tyrosine phosphatase of 220 kDa. CD45 is one of the most abundant hematopoietic markers, and is expressed on all leukocytes (the Leukocyte Common Antigen, LCA). Various isoforms are generated and expressed in cell-specific patterns, all critical for leukocyte function. In mouse, the CD45R/B220 isoform is predominantly found on B cells, at varying levels on all stages from pro-B cells to activated B cells, and may also be detected on certain T cell and NK cell subsets. It is of note that B220 is not similarly expressed on human B cells, where it appears to be differentiation-specific and therefore expressed on only some B cell subsets. Other forms of CD45 with restricted cellular expression include CD45RA, CD45RB, CD45RO and several others. The RA3-6B2 antibody is one of the most consistently used leukocyte markers for B cells, T cell subsets and NK cell subsets in human and mouse. This antibody has also been reported as cross-reactive with feline CD45R/B220.