

**FITC Anti-Human CD11b (ICRF44) Antibody**  
**Catalog # ATB10104****Specification**

---

**FITC Anti-Human CD11b (ICRF44) Antibody - Product Information**

Application	FC
Isotype	Mouse IgG1, kappa
Concentration	5 uL (1 ug)/test
Reactivity	Human
Formulation	10 mM NaH <sub>2</sub> PO <sub>4</sub> , 150 mM NaCl, 0.09% Na <sub>2</sub> S <sub>2</sub> O <sub>3</sub> , 0.1% gelatin, pH7.2
Host	Mouse

**FITC Anti-Human CD11b (ICRF44) Antibody - Additional Information**

Gene ID	3684
Gene Name	ITGAM
<b>Alternative Name(s)</b>	
Mac-1, integrin $\alpha$ M, Itgam, CR3	

**Format**  
FITC**Preparation**

This monoclonal antibody was purified from tissue culture supernatant via affinity chromatography. The purified antibody was conjugated under optimal conditions, with unreacted dye removed from the preparation. It is recommended to store the product undiluted at 4°C, and protected from prolonged exposure to light. Do not freeze.

**Application Notes**

This antibody preparation has been pre-titrated and quality-tested for flow cytometry using an appropriate cell type. The antibody has been diluted for use at 5 uL per test, defined as the amount of antibody that will stain a cell sample in a final volume of approximately 100 uL. The number of cells within a sample should be determined empirically, but typically ranges between 1x10<sup>5</sup> to 1x10<sup>8</sup> cells.

**Storage Conditions**

2-8°C protected from light

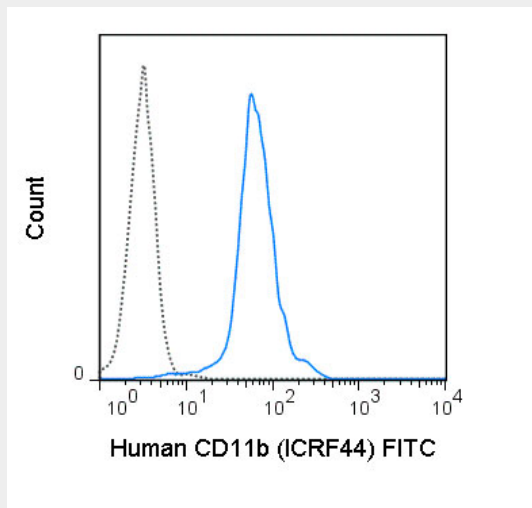
**FITC Anti-Human CD11b (ICRF44) Antibody - Protocols**

Provided below are standard protocols that you may find useful for product applications.

- [Western Blot](#)
- [Blocking Peptides](#)
- [Dot Blot](#)
- [Immunohistochemistry](#)
- [Immunofluorescence](#)

- [Immunoprecipitation](#)
- [Flow Cytometry](#)
- [Cell Culture](#)

#### **FITC Anti-Human CD11b (ICRF44) Antibody - Images**



Human peripheral blood monocytes were stained with 5 uL (1 ug) FITC Anti-Human CD11b (ATB10104) (solid line) or 1 ug FITC Mouse IgG1 isotype control (dashed line).

#### **FITC Anti-Human CD11b (ICRF44) Antibody - Background**

The ICRF44 antibody reacts with human CD11b, also known as integrin alpha M. This 165-170 kDa cell surface glycoprotein is part of a family of integrin receptors that mediate adhesion between cells (cell-cell) and components of the extracellular matrix, e.g. fibrinogen (cell-matrix). In addition, integrins are active signaling receptors which recruit leukocytes to inflammatory sites and promote cell activation. Complete, functional integrin receptors consist of distinct combinations of integrin chains which are differentially expressed. Integrin alpha M (CD11b) assembles with Integrin beta-2 (CD18) into a receptor known as Macrophage Antigen-1 (Mac-1) or complement receptor type 3 (CR3). This receptor binds and induces intracellular signaling through ICAM-1, ICAM-2, ICAM-3 and ICAM-4 on endothelial cells and can also facilitate removal of iC3b bearing foreign cells. The ICRF44 antibody is widely used as a marker for CD11b expression on macrophages, granulocytes, and subsets of NK cells. It is reported to be cross-reactive with a number of non-human species including Baboon, Chimpanzee, Cynomolgus, Rhesus and Swine.