

**FITC Anti-Human CD45RO (UCHL1) Antibody**  
**Catalog # ATB10112****Specification****FITC Anti-Human CD45RO (UCHL1) Antibody - Product Information**

Application	FC
Isotype	Mouse IgG2a, kappa
Concentration	5 uL (0.5 ug)/test
Reactivity	Human
Formulation	10 mM NaH <sub>2</sub> PO <sub>4</sub> , 150 mM NaCl, 0.09% NaN <sub>3</sub> , 0.1% gelatin, pH7.2
Host	Mouse

**FITC Anti-Human CD45RO (UCHL1) Antibody - Additional Information**

Gene ID	5788
Gene Name	PTPRC
Format	
FITC	

**Preparation**

This monoclonal antibody was purified from tissue culture supernatant via affinity chromatography. The purified antibody was conjugated under optimal conditions, with unreacted dye removed from the preparation. It is recommended to store the product undiluted at 4°C, and protected from prolonged exposure to light. Do not freeze.

**Application Notes**

This antibody preparation has been pre-titrated and quality-tested for flow cytometry using an appropriate cell type. The antibody has been diluted for use at 5 uL per test, defined as the amount of antibody that will stain a cell sample in a final volume of approximately 100 uL. The number of cells within a sample should be determined empirically, but typically ranges between 1x10<sup>5</sup> to 1x10<sup>8</sup> cells.

**Storage Conditions**

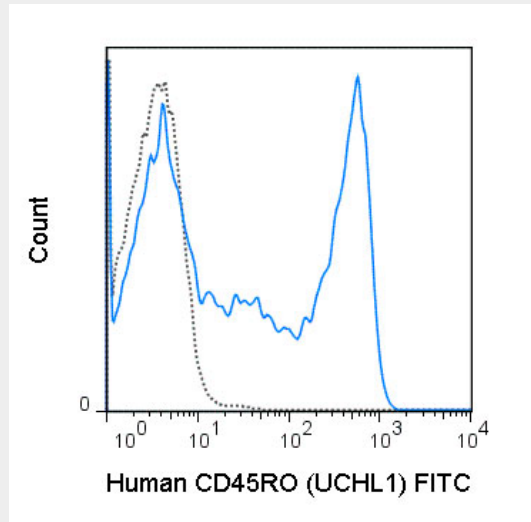
2-8°C protected from light

**FITC Anti-Human CD45RO (UCHL1) Antibody - Protocols**

Provided below are standard protocols that you may find useful for product applications.

- [Western Blot](#)
- [Blocking Peptides](#)
- [Dot Blot](#)
- [Immunohistochemistry](#)
- [Immunofluorescence](#)
- [Immunoprecipitation](#)
- [Flow Cytometry](#)
- [Cell Culture](#)

## FITC Anti-Human CD45RO (UCHL1) Antibody - Images



Human peripheral blood lymphocytes were stained with 5  $\mu$ L (0.5  $\mu$ g) FITC Anti-Human CD45RO (ATB10112) (solid line) or 0.5  $\mu$ g FITC Mouse IgG2a isotype control.

## FITC Anti-Human CD45RO (UCHL1) Antibody - Background

The UCHL1 antibody reacts with the human CD45 isoform known as CD45RO, a protein tyrosine phosphatase of 220 kDa. CD45 is one of the most abundant hematopoietic markers, and is expressed on all leukocytes (the Leukocyte Common Antigen, LCA). Various isoforms are generated and expressed in cell-specific patterns. With their broad cell distribution, CD45 isoforms are critical for many leukocyte functions, regulating signal transduction and cell activation associated with the T cell receptor, B cell receptor, and IL-2 receptor. Other forms of CD45, with restricted cellular expression, include CD45R (B220), CD45RA, CD45RB, and others. The UCHL1 antibody is widely used as a marker for human CD45RO expression on thymocytes, activated memory T cells, monocytes, macrophages and granulocytes. The antibody is reported to be cross-reactive for Chimpanzee CD45RO.