

PerCP-Cy5.5 Anti-Mouse Ly-6G (1A8) Antibody
Catalog # ATB10282**Specification****PerCP-Cy5.5 Anti-Mouse Ly-6G (1A8) Antibody - Product Information**

Application	FC
Isotype	Rat IgG2a, kappa
Concentration	0.2 mg/mL
Reactivity	Mouse
Formulation	10 mM NaH ₂ PO ₄ , 150 mM NaCl, 0.09% NaN ₃ , 0.1% gelatin, pH7.2
Host	Rat

PerCP-Cy5.5 Anti-Mouse Ly-6G (1A8) Antibody - Additional Information

Gene ID	546644
Alternative Name(s)	
Gr-1	

Format
PerCP-Cy5.5**Preparation**

This monoclonal antibody was purified from tissue culture supernatant via affinity chromatography. The purified antibody was conjugated under optimal conditions, with unreacted dye removed from the preparation. It is recommended to store the product undiluted at 4°C, and protected from prolonged exposure to light. Do not freeze.

Application Notes

percp-cy5-5-anti-mouse-ly-6g-1a8.html

Storage Conditions

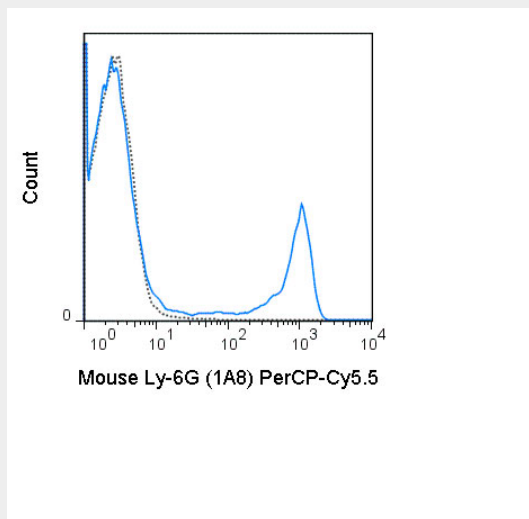
2-8°C protected from light

PerCP-Cy5.5 Anti-Mouse Ly-6G (1A8) Antibody - Protocols

Provided below are standard protocols that you may find useful for product applications.

- [Western Blot](#)
- [Blocking Peptides](#)
- [Dot Blot](#)
- [Immunohistochemistry](#)
- [Immunofluorescence](#)
- [Immunoprecipitation](#)
- [Flow Cytometry](#)
- [Cell Culture](#)

PerCP-Cy5.5 Anti-Mouse Ly-6G (1A8) Antibody - Images



C57Bl/6 bone marrow cells were stained with 0.25 ug PerCP-Cy5.5 Anti-Mouse Ly-6G (ATB10282) (solid line) or 0.25 ug PerCP-Cy5.5 Rat IgG2a isotype control (dashed line).

PerCP-Cy5.5 Anti-Mouse Ly-6G (1A8) Antibody - Background

The 1A8 antibody binds to mouse Ly-6G, commonly known as Gr-1, a member of the Ly-6 superfamily of GPI-anchored cell surface proteins with roles in cell signaling and cell adhesion. Gr-1 is differentially expressed during development and maturation of cells in the myeloid lineage and is expression at varying stages and levels on monocytes, macrophages, granulocytes, and peripheral neutrophils. In the mouse, the 1A8 antibody is typically used in combination with the macrophage labeling antibody M1/70 (Anti-CD11b) for phenotypic analysis of monocytes, macrophages and granulocytes. Note: for identification of Ly-C, an alternative antibody, clone RB6-8C5, has been reported to cross-react with Ly-6C on cells expressing this antigen (Fleming et al. 1993. J. Immunol. 151:2399-2408 and Sasmono et al. 2007. J. Leukoc. Biol. 82: 111-123) and has been cited in the literature for identification of Ly-6G/Ly-6C.