

violetFluor™ 450 Anti-Human CD38 (HIT2) Antibody
Catalog # ATB10352**Specification**

violetFluor™ 450 Anti-Human CD38 (HIT2) Antibody - Product Information

Application	FC
Isotype	Mouse IgG1, kappa
Concentration	5 uL (0.5 ug)/test
Reactivity	Human
Formulation	10 mM NaH ₂ PO ₄ , 150 mM NaCl, 0.09% NaN ₃ , 0.1% gelatin, pH7.2

violetFluor™ 450 Anti-Human CD38 (HIT2) Antibody - Additional Information**Format**

violetFluor™ 450

Preparation

This monoclonal antibody was purified from tissue culture supernatant via affinity chromatography. The purified antibody was conjugated under optimal conditions, with unreacted dye removed from the preparation. It is recommended to store the product undiluted at 4°C, and protected from prolonged exposure to light. Do not freeze.

Application Notes

This antibody preparation has been pre-titrated and quality-tested for flow cytometry using an appropriate cell type. The antibody has been diluted for use at 5 uL per test, defined as the amount of antibody that will stain a cell sample in a final volume of approximately 100 uL. The number of cells within a sample should be determined empirically, but typically ranges between 1x10⁵ to 1x10⁸ cells. violetFluor™ 450 dye is excited by the violet (405 nm) laser and has a peak emission of 450 nm. The most common band pass filters for this dye are 440/40 or 450/50. violetFluor™ 450 can be used as an alternative for Pacific Blue®, BD Horizon™ V450 or eFluor® 450.

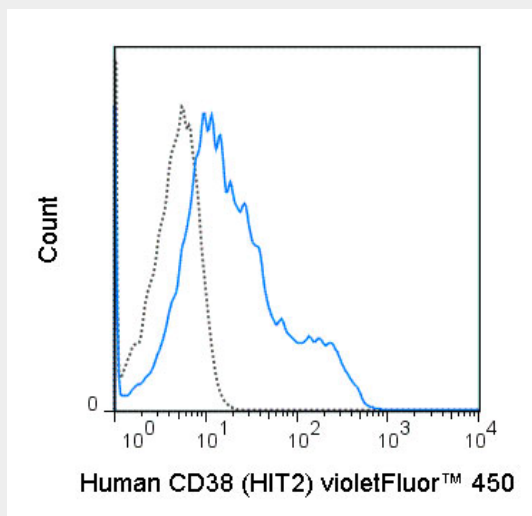
Storage Conditions

2-8°C protected from light

violetFluor™ 450 Anti-Human CD38 (HIT2) Antibody - Protocols

Provided below are standard protocols that you may find useful for product applications.

- [Western Blot](#)
- [Blocking Peptides](#)
- [Dot Blot](#)
- [Immunohistochemistry](#)
- [Immunofluorescence](#)
- [Immunoprecipitation](#)
- [Flow Cytometry](#)
- [Cell Culture](#)

violetFluor™ 450 Anti-Human CD38 (HIT2) Antibody - Images

Human peripheral blood lymphocytes were stained with 5 uL (0.5 ug) violetFluor™ 450 Anti-Human CD38 (ATB10352) (solid line) or 0.5 ug violetFluor™ 450 Mouse IgG1 isotype control (dashed line).

violetFluor™ 450 Anti-Human CD38 (HIT2) Antibody - Background

The HIT2 antibody is specific for human CD38, a 45 kD type II transmembrane glycoprotein expressed on thymocytes, activated T and B cells, and monocytes as well as other non-hematopoietic cells. CD38 is an ectoenzyme that functions to catalyze the synthesis and hydrolysis of cyclic ADP-ribose and is involved in cell signaling, regulating cell adhesion, and activation. Additionally, CD38 has been shown to be a prognostic marker for some leukemias and other diseases.