

violetFluor™ 450 Anti-Mouse CD45.1 (A20) Antibody
Catalog # ATB10356**Specification****violetFluor™ 450 Anti-Mouse CD45.1 (A20) Antibody - Product Information**

Application	FC
Isotype	Mouse IgG2a, kappa
Concentration	0.2 mg/mL
Reactivity	Mouse
Formulation	10 mM NaH ₂ PO ₄ , 150 mM NaCl, 0.09% NaN ₃ , 0.1% gelatin, pH7.2

violetFluor™ 450 Anti-Mouse CD45.1 (A20) Antibody - Additional Information

Gene ID	19264
Alternative Name(s)	
SJL, Ly5.1	

Format

violetFluor™ 450

Preparation

This monoclonal antibody was purified from tissue culture supernatant via affinity chromatography. The purified antibody was conjugated under optimal conditions, with unreacted dye removed from the preparation. It is recommended to store the product undiluted at 4°C, and protected from prolonged exposure to light. Do not freeze.

Application Notes

This antibody preparation has been quality-tested for flow cytometry using mouse spleen cells, or an appropriate cell type (where indicated). The amount of antibody required for optimal staining of a cell sample should be determined empirically in your system. violetFluor™ 450 dye is excited by the violet (405 nm) laser and has a peak emission of 450 nm. The most common band pass filters for this dye are 440/40 or 450/50. violetFluor™ 450 can be used as an alternative for Pacific Blue®, BD Horizon™ V450 or eFluor® 450.

Storage Conditions

2-8°C protected from light

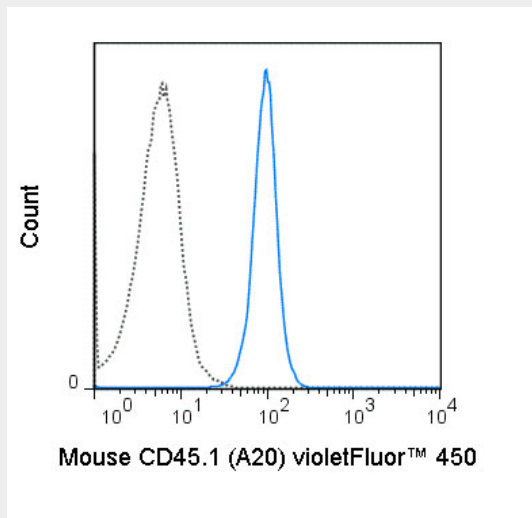
violetFluor™ 450 Anti-Mouse CD45.1 (A20) Antibody - Protocols

Provided below are standard protocols that you may find useful for product applications.

- [Western Blot](#)
- [Blocking Peptides](#)
- [Dot Blot](#)
- [Immunohistochemistry](#)
- [Immunofluorescence](#)
- [Immunoprecipitation](#)

- [Flow Cytometry](#)
- [Cell Culture](#)

violetFluor™ 450 Anti-Mouse CD45.1 (A20) Antibody - Images



SJL splenocytes were stained with 0.5 ug violetFluor™ 450 Anti-Mouse CD45.1 (25-0453) (solid line) or 0.5 ug violetFluor™ 450 Mouse IgG2a isotype control (dashed line).

violetFluor™ 450 Anti-Mouse CD45.1 (A20) Antibody - Background

The A20 antibody reacts with mouse CD45.1, also known as Ly5.1, which is a strain-specific allelic form of the CD45 Leukocyte Common Antigen (LCA). Functionally, CD45 is a protein tyrosine phosphatase whose broad cell distribution supports a critical role in many leukocyte functions, including regulation of signal transduction and cell activation associated with the T cell and B cell receptors. The A20 antibody is typically used as a leukocyte marker in Ly5.1 mouse strains: SJL/J, DA, STS/A and RIII. The antibody has been demonstrated to be specific for CD45.1 and is not cross-reactive with CD45.2 bearing cells.