

FITC Anti-Mouse CD2 (RM2-5) Antibody
Catalog # ATB10374**Specification****FITC Anti-Mouse CD2 (RM2-5) Antibody - Product Information**

Application	FC
Isotype	Rat IgG2b, lambda
Concentration	0.5 mg/mL
Reactivity	Mouse
Formulation	10 mM NaH ₂ PO ₄ , 150 mM NaCl, 0.09% Na ₂ S ₂ O ₃ , 0.1% gelatin, pH7.2
Host	Rat

FITC Anti-Mouse CD2 (RM2-5) Antibody - Additional Information

Gene ID	12481
Gene Name	Cd2
Alternative Name(s)	
LFA-2, Ly-37	

Format
FITC**Preparation**

This monoclonal antibody was purified from tissue culture supernatant via affinity chromatography. The purified antibody was conjugated under optimal conditions, with unreacted dye removed from the preparation. It is recommended to store the product undiluted at 4°C, and protected from prolonged exposure to light. Do not freeze.

Application Notes

This antibody preparation has been quality-tested for flow cytometry using mouse spleen cells, or an appropriate cell type (where indicated). The amount of antibody required for optimal staining of a cell sample should be determined empirically in your system.

Storage Conditions

2-8°C protected from light

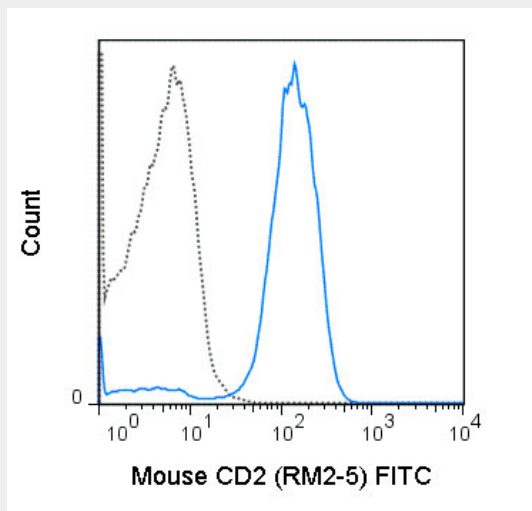
FITC Anti-Mouse CD2 (RM2-5) Antibody - Protocols

Provided below are standard protocols that you may find useful for product applications.

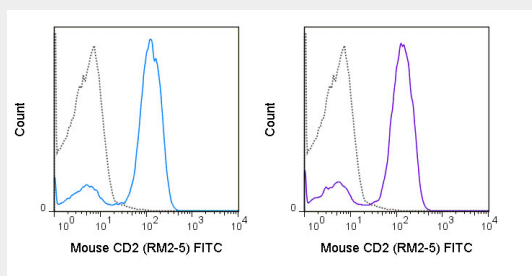
- [Western Blot](#)
- [Blocking Peptides](#)
- [Dot Blot](#)
- [Immunohistochemistry](#)
- [Immunofluorescence](#)
- [Immunoprecipitation](#)
- [Flow Cytometry](#)

- [Cell Culture](#)

FITC Anti-Mouse CD2 (RM2-5) Antibody - Images



C57Bl/6 splenocytes were stained with 0.25 ug FITC Anti-Mouse CD2 (ATB10374) (solid line) or 0.25 ug FITC Rat IgG2b (dashed line).



C57Bl/6 splenocytes were stained with 0.125 ug FITC Anti-Mouse CD2 (RM2-5) manufactured by Tonbo Biosciences (left panel) or BioLegend (right panel).

FITC Anti-Mouse CD2 (RM2-5) Antibody - Background

The RM2-5 antibody reacts with mouse CD2, an approximately 50 kDa glycoprotein, and a member of the Ig superfamily. CD2, also known as LFA-2, is a receptor for CD48 in the mouse and is expressed on the cell surface of all mouse lymphocytes. CD2 mediates adhesion between cells and is involved in T cell activation. RM2-5 is reported to block CD2-mediated cell:cell adhesion.

FITC Anti-Mouse CD2 (RM2-5) Antibody - References

Yagita H, Nakamura T, Karasuyama H, Okumura K. 1989. Proc. Natl. Acad. Sci. 86(2):645-9.
Nakamura T, Takahashi K, Fukazawa T, Koyanagi M, Yokoyama A, Kato H, Yagita H, Okumura K. 1990. J. Immunol. 145(11):3628-34. Criado G, Feito MJ, Rojo JM. 1996. Eur. J. Immunol. 26(6):1228-34. Cibotti R, Punt JA, Dash KS, Sharrow SO, Singer A. 1997. Immunity. 6(3):245-55.