

MME Antibody (N-term)
Purified Rabbit Polyclonal Antibody (Pab)
Catalog # AW5015**Specification**

MME Antibody (N-term) - Product Information

Application	WB,E
Primary Accession	P08473
Reactivity	Human, Mouse, Rat
Host	Rabbit
Clonality	polyclonal
Calculated MW	H=86;M=86;Rat=86 KDa
Isotype	Rabbit IgG
Antigen Source	HUMAN

MME Antibody (N-term) - Additional Information**Gene ID** 4311**Antigen Region**
99-132**Other Names**

Neprilysin, Atriopeptidase, Common acute lymphocytic leukemia antigen, CALLA, Enkephalinase, Neutral endopeptidase 2411, NEP, Neutral endopeptidase, Skin fibroblast elastase, SFE, CD10, MME, EPN

Dilution

WB~~1:1000

Target/Specificity

This MME antibody is generated from a rabbit immunized with a KLH conjugated synthetic peptide between 99-132 amino acids from the N-terminal region of human MME.

Format

Purified polyclonal antibody supplied in PBS with 0.09% (W/V) sodium azide. This antibody is purified through a protein A column, followed by peptide affinity purification.

Storage

Maintain refrigerated at 2-8°C for up to 2 weeks. For long term storage store at -20°C in small aliquots to prevent freeze-thaw cycles.

Precautions

MME Antibody (N-term) is for research use only and not for use in diagnostic or therapeutic procedures.

MME Antibody (N-term) - Protein Information

Name MME {ECO:0000303|PubMed:27588448, ECO:0000312|HGNC:HGNC:7154}

Function

Thermolysin-like specificity, but is almost confined on acting on polypeptides of up to 30 amino acids (PubMed:15283675, PubMed:6208535, PubMed:6349683, PubMed:8168535). Biologically important in the destruction of opioid peptides such as Met- and Leu-enkephalins by cleavage of a Gly-Phe bond (PubMed:17101991, PubMed:6349683). Catalyzes cleavage of bradykinin, substance P and neurotensin peptides (PubMed:6208535). Able to cleave angiotensin-1, angiotensin-2 and angiotensin 1-9 (PubMed:15283675, PubMed:6349683). Involved in the degradation of atrial natriuretic factor (ANF) and brain natriuretic factor (BNP(1-32)) (PubMed:16254193, PubMed:2531377, PubMed:2972276). Displays UV-inducible elastase activity toward skin preelastic and elastic fibers (PubMed:20876573).

Cellular Location

Cell membrane; Single-pass type II membrane protein

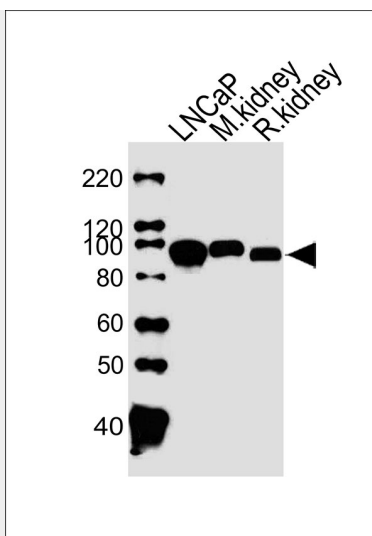
MME Antibody (N-term) - Protocols

Provided below are standard protocols that you may find useful for product applications.

- [Western Blot](#)
- [Blocking Peptides](#)
- [Dot Blot](#)
- [Immunohistochemistry](#)
- [Immunofluorescence](#)
- [Immunoprecipitation](#)
- [Flow Cytometry](#)
- [Cell Culture](#)

MME Antibody (N-term) - Images





Western blot analysis of lysates from LNCaP cell line, mouse kidney and rat kidney tissue lysate (from left to right), using MME Antibody (N-term) (Cat. #AW5015). AW5015 was diluted at 1:1000 at each lane. A goat anti-rabbit IgG H&L (HRP) at 1:10000 dilution was used as the secondary antibody.

MME Antibody (N-term) - Background

Thermolysin-like specificity, but is almost confined on acting on polypeptides of up to 30 amino acids. Biologically important in the destruction of opioid peptides such as Met- and Leu-enkephalins by cleavage of a Gly-Phe bond. Able to cleave angiotensin-1, angiotensin-2 and angiotensin 1-9. Involved in the degradation of atrial natriuretic factor (ANF). Displays UV- inducible elastase activity toward skin preelastic and elastic fibers.

MME Antibody (N-term) - References

- Letarte M., et al. *J. Exp. Med.* 168:1247-1253(1988).
- Shipp M.A., et al. *Proc. Natl. Acad. Sci. U.S.A.* 85:4819-4823(1988).
- Adamio L., et al. *Proc. Natl. Acad. Sci. U.S.A.* 86:7103-7107(1989).
- Ota T., et al. *Nat. Genet.* 36:40-45(2004).
- Mural R.J., et al. Submitted (SEP-2005) to the EMBL/GenBank/DDBJ databases.