

RPL6 Antibody (N-term)
Purified Rabbit Polyclonal Antibody (Pab)
Catalog # AW5024**Specification**

RPL6 Antibody (N-term) - Product Information

Application	IHC-P, IF, FC, WB,E
Primary Accession	Q02878
Reactivity	Human
Host	Rabbit
Clonality	polyclonal
Calculated MW	H=33 KDa
Isotype	Rabbit IgG
Antigen Source	HUMAN

RPL6 Antibody (N-term) - Additional Information**Gene ID** 6128**Antigen Region**
2-35**Other Names**

60S ribosomal protein L6, Neoplasm-related protein C140, Tax-responsive enhancer element-binding protein 107, TaxREB107, RPL6, TXREB1

Dilution

IHC-P~~1:25

IF~~1:25

FC~~1:25

WB~~1:1000

Target/Specificity

This RPL6 antibody is generated from a rabbit immunized with a KLH conjugated synthetic peptide between 2-35amino acids from the N-terminal region of human RPL6.

Format

Purified polyclonal antibody supplied in PBS with 0.09% (W/V) sodium azide. This antibody is purified through a protein A column, followed by peptide affinity purification.

Storage

Maintain refrigerated at 2-8°C for up to 2 weeks. For long term storage store at -20°C in small aliquots to prevent freeze-thaw cycles.

Precautions

RPL6 Antibody (N-term) is for research use only and not for use in diagnostic or therapeutic procedures.

RPL6 Antibody (N-term) - Protein Information

Name RPL6**Synonyms** TXREB1**Function**

Component of the large ribosomal subunit (PubMed:12962325, PubMed:23636399, PubMed:25901680, PubMed:25957688, PubMed:32669547). The ribosome is a large ribonucleoprotein complex responsible for the synthesis of proteins in the cell (PubMed:12962325, PubMed:23636399, PubMed:25901680, PubMed:25957688, PubMed:32669547).

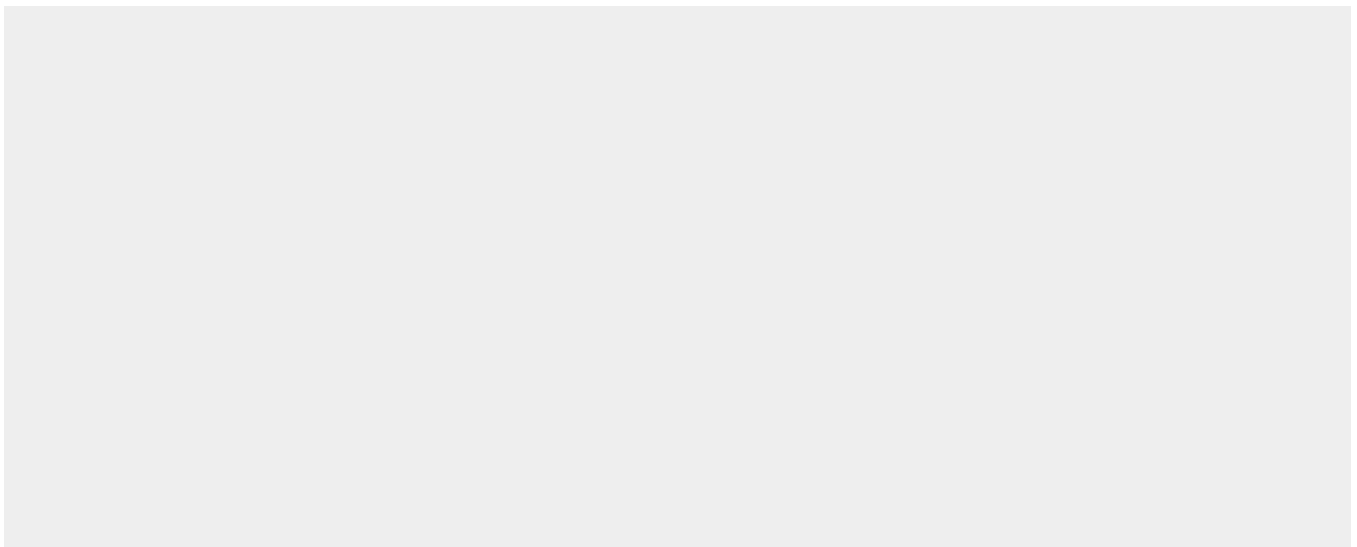
Cellular Location

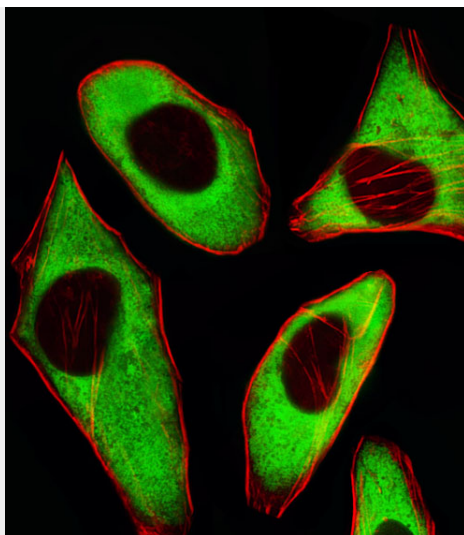
Cytoplasm, cytosol. Cytoplasm Rough endoplasmic reticulum {ECO:0000250|UniProtKB:Q2YGT9} Note=Detected on cytosolic polysomes (PubMed:25957688). Detected in ribosomes that are associated with the rough endoplasmic reticulum (By similarity). {ECO:0000250|UniProtKB:Q2YGT9, ECO:0000269|PubMed:25957688}

RPL6 Antibody (N-term) - Protocols

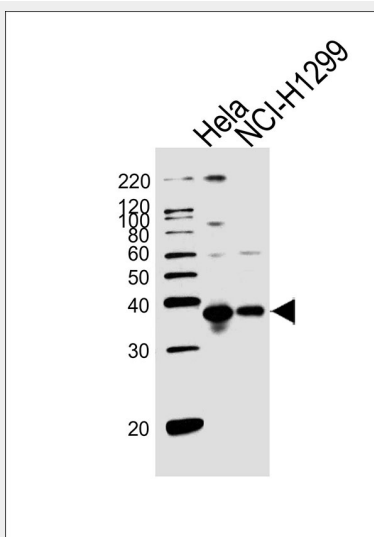
Provided below are standard protocols that you may find useful for product applications.

- [Western Blot](#)
- [Blocking Peptides](#)
- [Dot Blot](#)
- [Immunohistochemistry](#)
- [Immunofluorescence](#)
- [Immunoprecipitation](#)
- [Flow Cytometry](#)
- [Cell Culture](#)

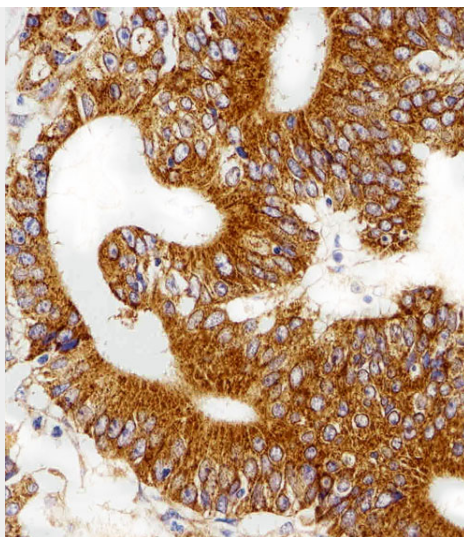
RPL6 Antibody (N-term) - Images



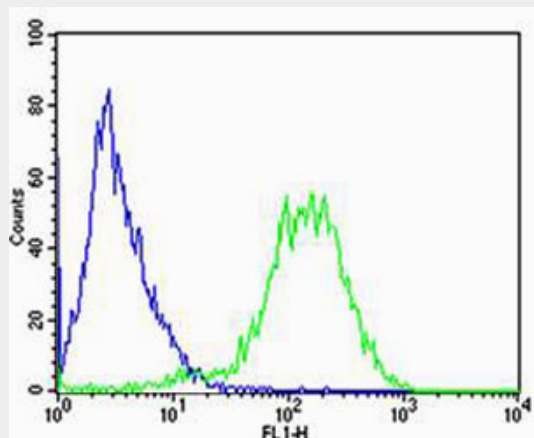
Fluorescent image of HeLa cells stained with RPL6 Antibody (N-term)(Cat#AW5024). AW5024 was diluted at 1:25 dilution. An Alexa Fluor 488-conjugated goat anti-rabbit IgG at 1:400 dilution was used as the secondary antibody (green). Cytoplasmic actin was counterstained with Alexa Fluor® 555 conjugated with Phalloidin (red).



Western blot analysis of lysates from HeLa, NCI-H1299 cell line (from left to right), using RPL6 Antibody (N-term)(Cat. #AW5024). AW5024 was diluted at 1:1000 at each lane. A goat anti-rabbit IgG H&L(HRP) at 1:10000 dilution was used as the secondary antibody.



Immunohistochemical analysis of paraffin-embedded H. gastric carcinoma section using RPL6 Antibody (N-term)(Cat#NA). NA was diluted at 1:100 dilution. A peroxidase-conjugated goat anti-rabbit IgG at 1:400 dilution was used as the secondary antibody, followed by DAB staining.



Flow cytometric analysis of Jurkat cells using RPL6 Antibody (N-term)(green, Cat#AW5024) compared to an isotype control of rabbit IgG(blue). AW5024 was diluted at 1:25 dilution. An Alexa Fluor® 488 goat anti-rabbit IgG at 1:400 dilution was used as the secondary antibody.

RPL6 Antibody (N-term) - Background

Specifically binds to domain C of the Tax-responsive enhancer element in the long terminal repeat of HTLV-I.

RPL6 Antibody (N-term) - References

Zaman G.J.R.,et al.Nucleic Acids Res. 21:1673-1673(1993).
Morita T.,et al.AIDS Res. Hum. Retroviruses 9:115-121(1993).
Kenmochi N.,et al.J. Hum. Genet. 45:290-293(2000).
Ohta K.,et al.J. Mol. Endocrinol. 12:85-92(1994).
Odintsova T.I.,et al.J. Protein Chem. 22:249-258(2003).