

PMM2 Antibody (C-term)
Affinity Purified Rabbit Polyclonal Antibody (Pab)
Catalog # AW5044

Specification

PMM2 Antibody (C-term) - Product Information

Application	WB,E
Primary Accession	O15305
Other Accession	O9Z2M7 , O60HD6 , Q3SZJ9 , NP_000294.1
Reactivity	Human
Predicted	Mouse, Monkey, Bovine
Host	Rabbit
Clonality	Polyclonal
Calculated MW	28082 Da
Isotype	Rabbit IgG
Antigen Source	HUMAN

PMM2 Antibody (C-term) - Additional Information

Gene ID 5373

Antigen Region
198-226

Other Names
PMM2; Phosphomannomutase 2

Dilution
WB~~1:2000

Target/Specificity
This PMM2 antibody is generated from rabbits immunized with a KLH conjugated synthetic peptide between 198-226 amino acids from the C-terminal region of human PMM2.

Format
Purified polyclonal antibody supplied in PBS with 0.09% (W/V) sodium azide. This antibody is purified through a protein A column, followed by peptide affinity purification.

Storage
Maintain refrigerated at 2-8°C for up to 2 weeks. For long term storage store at -20°C in small aliquots to prevent freeze-thaw cycles.

Precautions
PMM2 Antibody (C-term) is for research use only and not for use in diagnostic or therapeutic procedures.

PMM2 Antibody (C-term) - Protein Information

Name PMM2

Function

Involved in the synthesis of the GDP-mannose and dolichol- phosphate-mannose required for a number of critical mannosyl transfer reactions.

Cellular Location

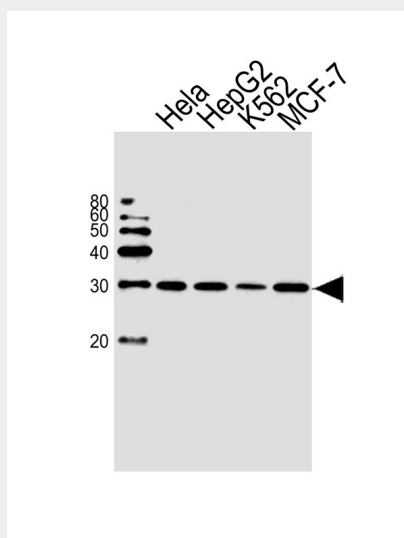
Cytoplasm.

PMM2 Antibody (C-term) - Protocols

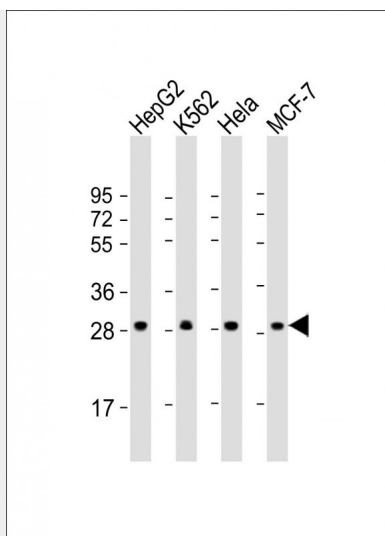
Provided below are standard protocols that you may find useful for product applications.

- [Western Blot](#)
- [Blocking Peptides](#)
- [Dot Blot](#)
- [Immunohistochemistry](#)
- [Immunofluorescence](#)
- [Immunoprecipitation](#)
- [Flow Cytometry](#)
- [Cell Culture](#)

PMM2 Antibody (C-term) - Images



Western blot analysis of lysates from HeLa, HepG2, K562, MCF-7 cell line (from left to right), using PMM2 Antibody (C-term)(Cat. #AW5044). AW5044 was diluted at 1:1000 at each lane. A goat anti-rabbit IgG H&L(HRP) at 1:10000 dilution was used as the secondary antibody.



All lanes : Anti-PMM2 Antibody (C-term) at 1:2000 dilution Lane 1: HepG2 whole cell lysate Lane 2: K562 whole cell lysate Lane 3: Hela whole cell lysate Lane 4: MCF-7 whole cell lysate Lysates/proteins at 20 µg per lane. Secondary Goat Anti-Rabbit IgG, (H+L), Peroxidase conjugated at 1/10000 dilution. Predicted band size : 28 kDa Blocking/Dilution buffer: 5% NFDM/TBST.

PMM2 Antibody (C-term) - Background

The protein encoded by this gene catalyzes the isomerization of mannose 6-phosphate to mannose 1-phosphate, which is a precursor to GDP-mannose necessary for the synthesis of dolichol-P-oligosaccharides. Mutations in this gene have been shown to cause defects in glycoprotein biosynthesis, which manifests as carbohydrate-deficient glycoprotein syndrome type I. [provided by RefSeq].

PMM2 Antibody (C-term) - References

Vega, A.I., et al. Hum. Mutat. 30(5):795-803(2009)
Coman, D., et al. Am. J. Med. Genet. A 146(3):389-392(2008)
Vermeer, S., et al. J. Neurol. 254(10):1356-1358(2007)
Coman, D., et al. J Clin Neurosci 14(7):668-672(2007)
Schollen, E., et al. Mol. Genet. Metab. 90(4):408-413(2007)