

HLA-C Antibody (N-term)
Affinity Purified Rabbit Polyclonal Antibody (Pab)
Catalog # AW5046**Specification**

HLA-C Antibody (N-term) - Product Information

| | |
|-------------------|---|
| Application | WB, FC,E |
| Primary Accession | P10321 |
| Other Accession | P30490 , P30488 , P30487 , P30486 , P30485 , P30483 , P30481 , P30479 , Q04826 , P18463 , P30464 , P30461 |
| Reactivity | Human |
| Host | Rabbit |
| Clonality | Polyclonal |
| Calculated MW | 40,649 Da Da |
| Isotype | Rabbit IgG |
| Antigen Source | HUMAN |

HLA-C Antibody (N-term) - Additional Information**Antigen Region**

62-90

Other Names

HLA class I histocompatibility antigen, C alpha chain, HLA-Cw, Human leukocyte antigen C

Dilution

WB~~1:1000

FC~~1:25

Target/Specificity

This HLA-C antibody is generated from rabbits immunized with a KLH conjugated synthetic peptide between 62-90 amino acids from the N-terminal region of human HLA-C.

Format

Purified polyclonal antibody supplied in PBS with 0.09% (W/V) sodium azide. This antibody is purified through a protein A column, followed by peptide affinity purification.

Storage

Maintain refrigerated at 2-8°C for up to 2 weeks. For long term storage store at -20°C in small aliquots to prevent freeze-thaw cycles.

Precautions

HLA-C Antibody (N-term) is for research use only and not for use in diagnostic or therapeutic procedures.

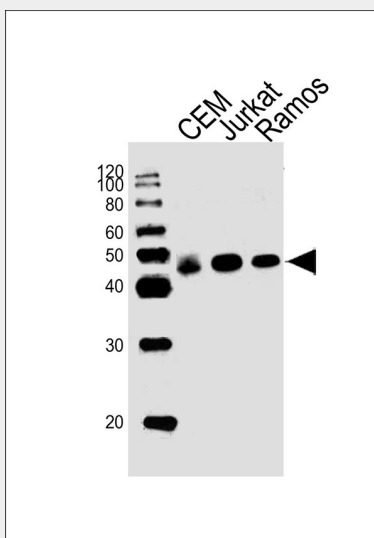
HLA-C Antibody (N-term) - Protein Information

HLA-C Antibody (N-term) - Protocols

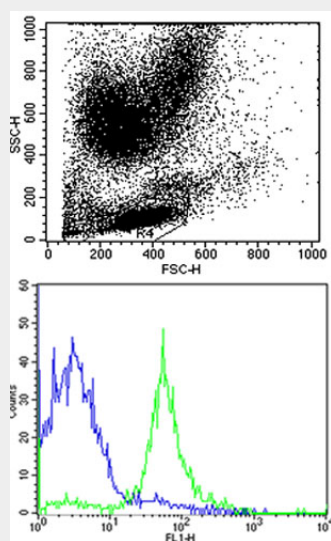
Provided below are standard protocols that you may find useful for product applications.

- [Western Blot](#)
- [Blocking Peptides](#)
- [Dot Blot](#)
- [Immunohistochemistry](#)
- [Immunofluorescence](#)
- [Immunoprecipitation](#)
- [Flow Cytometry](#)
- [Cell Culture](#)

HLA-C Antibody (N-term) - Images

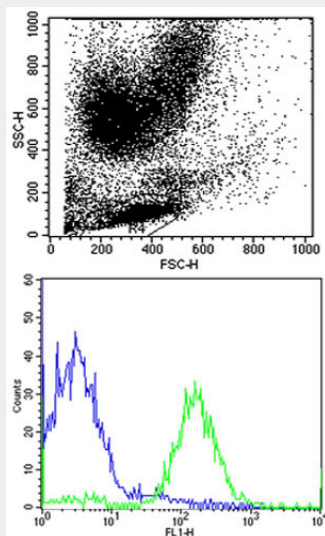


Western blot analysis of lysates from CEM, Jurkat, Ramos cell line (from left to right), using HLA-C Antibody (N-term) (Cat. #AW5046). AW5046 was diluted at 1:1000 at each lane. A goat anti-rabbit IgG H&L(HRP) at 1:10000 dilution was used as the secondary antibody.



Flow cytometric analysis of human peripheral blood lymphocytes cells using HLA-C Antibody

(N-term) (green, Cat#AW5046) compared to an isotype control of rabbit IgG (blue). AW5046 was diluted at 1:25 dilution. An Alexa Fluor 488-conjugated goat anti-rabbit IgG at 1:400 dilution was used as the secondary antibody.



Flow cytometric analysis of human peripheral blood lymphocytes cells using HLA-C Antibody (N-term) (green, Cat#AW5046) compared to an isotype control of rabbit IgG (blue). AW5046 was diluted at 1:25 dilution. An Alexa Fluor 488-conjugated goat anti-rabbit IgG at 1:400 dilution was used as the secondary antibody.

HLA-C Antibody (N-term) - Background

HLA-B is involved in the presentation of foreign antigens to the immune system.

HLA-C Antibody (N-term) - References

- Higgins,C.M., et.al., Ann. Rheum. Dis. 51 (7), 855-862 (1992)
 Guild,B.C.et.al., J. Biol. Chem. 259 (14), 9235-9240 (1984)
 Orr,H.T., et.alt., Biochemistry 18 (25), 5711-5720 (1979)