

**EEF1B2 Antibody (Center)**  
**Purified Rabbit Polyclonal Antibody (Pab)**  
**Catalog # AW5048****Specification**

---

**EEF1B2 Antibody (Center) - Product Information**

Application	FC, IF, IHC-P, WB,E
Primary Accession	<a href="#">P24534</a>
Other Accession	<a href="#">Q9YGO1</a>
Reactivity	Human
Predicted	Chicken
Host	Rabbit
Clonality	Polyclonal
Calculated MW	H=25 KDa
Isotype	Rabbit IgG
Antigen Source	HUMAN

**EEF1B2 Antibody (Center) - Additional Information****Gene ID** 1933**Antigen Region**  
54-86**Other Names**  
Elongation factor 1-beta, EF-1-beta, EEF1B2, EEF1B, EF1B**Dilution**  
FC~~1:25  
IF~~1:25  
IHC-P~~1:25  
WB~~1:1000**Target/Specificity**  
This EEF1B2 antibody is generated from a rabbit immunized with a KLH conjugated synthetic peptide between 54-86 amino acids from the Central region of human EEF1B2.**Format**  
Purified polyclonal antibody supplied in PBS with 0.09% (W/V) sodium azide. This antibody is purified through a protein A column, followed by peptide affinity purification.**Storage**  
Maintain refrigerated at 2-8°C for up to 2 weeks. For long term storage store at -20°C in small aliquots to prevent freeze-thaw cycles.**Precautions**  
EEF1B2 Antibody (Center) is for research use only and not for use in diagnostic or therapeutic procedures.

## EEF1B2 Antibody (Center) - Protein Information

**Name** EEF1B2

**Synonyms** EEF1B, EF1B

### Function

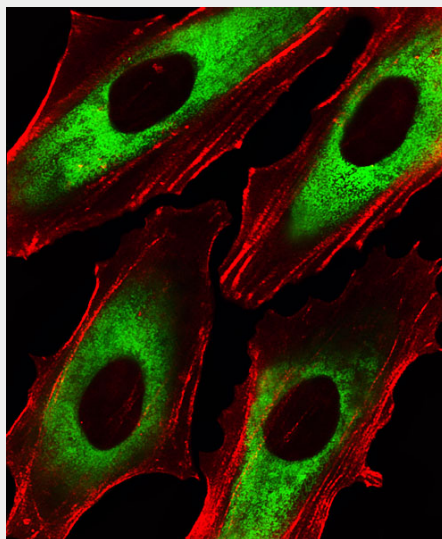
Catalytic subunit of the guanine nucleotide exchange factor (GEF) (eEF1B subcomplex) of the eukaryotic elongation factor 1 complex (eEF1) (By similarity). Stimulates the exchange of GDP for GTP on elongation factor 1A (eEF1A), probably by displacing GDP from the nucleotide binding pocket in eEF1A (By similarity).

## EEF1B2 Antibody (Center) - Protocols

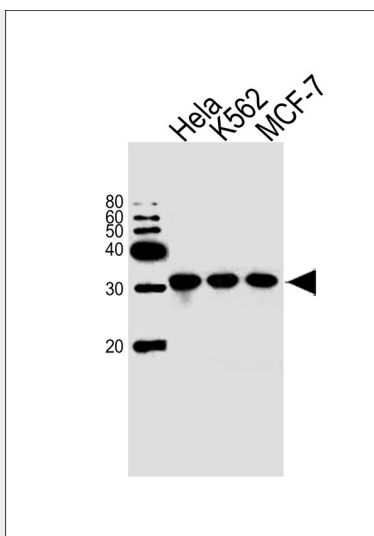
Provided below are standard protocols that you may find useful for product applications.

- [Western Blot](#)
- [Blocking Peptides](#)
- [Dot Blot](#)
- [Immunohistochemistry](#)
- [Immunofluorescence](#)
- [Immunoprecipitation](#)
- [Flow Cytometry](#)
- [Cell Culture](#)

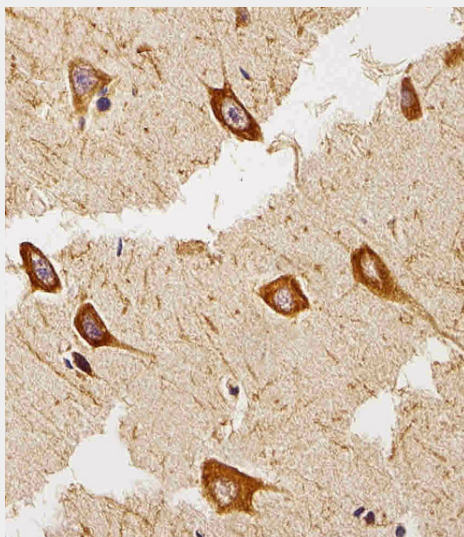
## EEF1B2 Antibody (Center) - Images



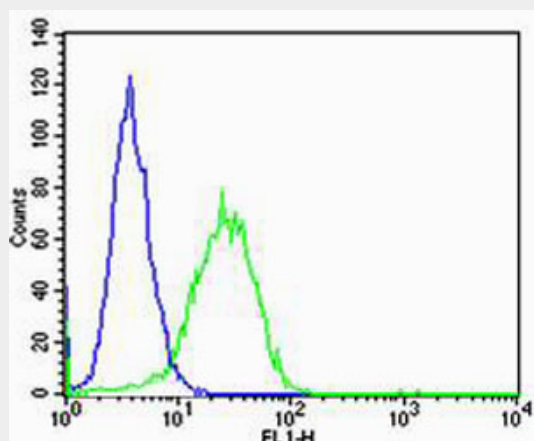
Fluorescent image of HeLa cells stained with EEF1B2 Antibody (Center)(Cat#AW5048). AW5048 was diluted at 1:25 dilution. An Alexa Fluor 488-conjugated goat anti-rabbit IgG at 1:400 dilution was used as the secondary antibody (green). Cytoplasmic actin was counterstained with Alexa Fluor® 555 conjugated with Phalloidin (red).



Western blot analysis of lysates from HeLa, K562, MCF-7 cell line (from left to right), using EEF1B2 Antibody (Center)(Cat. #AW5048). AW5048 was diluted at 1:1000 at each lane. A goat anti-rabbit IgG H&L(HRP) at 1:10000 dilution was used as the secondary antibody.



Immunohistochemical analysis of paraffin-embedded H. brain section using EEF1B2 Antibody (Center)(Cat#AW5048). AW5048 was diluted at 1:25 dilution. A peroxidase-conjugated goat anti-rabbit IgG at 1:400 dilution was used as the secondary antibody, followed by DAB staining.



Flow cytometric analysis of Hela cells using EEF1B2 Antibody (Center)(green, Cat#AW5048) compared to an isotype control of rabbit IgG(blue). AW5048 was diluted at 1:25 dilution. An Alexa Fluor® 488 goat anti-rabbit IgG at 1:400 dilution was used as the secondary antibody.

**EEF1B2 Antibody (Center) - Background**

EF-1-beta and EF-1-delta stimulate the exchange of GDP bound to EF-1-alpha to GTP.

**EEF1B2 Antibody (Center) - References**

Sanders J.,et al.Nucleic Acids Res. 19:4551-4551(1991).  
von der Kammer H.,et al.Biochem. Biophys. Res. Commun. 177:312-317(1991).  
Kalnine N.,et al.Submitted (MAY-2003) to the EMBL/GenBank/DDBJ databases.  
Ebert L.,et al.Submitted (JUN-2004) to the EMBL/GenBank/DDBJ databases.  
Ota T.,et al.Nat. Genet. 36:40-45(2004).