

VEGFC Antibody
Mouse Monoclonal Antibody (Mab)
Catalog # AW5055

Specification

VEGFC Antibody - Product Information

Application	WB,E
Primary Accession	P49767
Other Accession	NP_005420.1
Reactivity	Human, Mouse, Rat
Host	Mouse
Clonality	Monoclonal
Calculated MW	H=47;M=46;Rat=46 KDa
Isotype	IgG1,K
Antigen Source	HUMAN

VEGFC Antibody - Additional Information

Gene ID 7424

Antigen Region
1-270

Other Names
VEGFC; Vascular endothelial growth factor C; Flt4 ligand; Vascular endothelial growth factor-related protein

Dilution
WB~~1:2000

Target/Specificity
This VEGFC monoclonal antibody is generated from mouse immunized with VEGFC recombinant protein.

Format
Purified monoclonal antibody supplied in PBS with 0.09% (W/V) sodium azide. This antibody is purified through a protein G column, followed by dialysis against PBS.

Storage
Maintain refrigerated at 2-8°C for up to 2 weeks. For long term storage store at -20°C in small aliquots to prevent freeze-thaw cycles.

Precautions
VEGFC Antibody is for research use only and not for use in diagnostic or therapeutic procedures.

VEGFC Antibody - Protein Information

Name VEGFC

Function

Growth factor active in angiogenesis, and endothelial cell growth, stimulating their proliferation and migration and also has effects on the permeability of blood vessels. May function in angiogenesis of the venous and lymphatic vascular systems during embryogenesis, and also in the maintenance of differentiated lymphatic endothelium in adults. Binds and activates KDR/VEGFR2 and FLT4/VEGFR3 receptors.

Cellular Location

Secreted.

Tissue Location

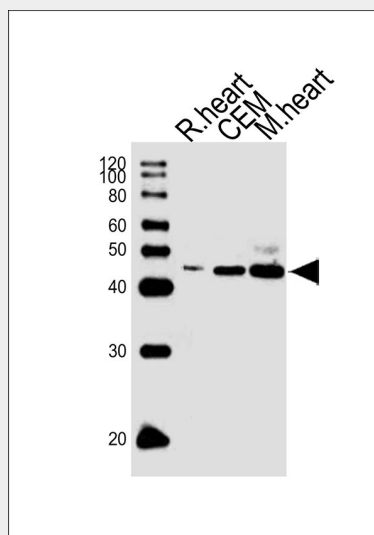
Expressed in the spleen (PubMed:8700872, PubMed:9247316). Expressed in the lymph node, thymus, appendix and bone marrow (PubMed:9247316). Expressed in the heart, placenta, skeletal muscle, ovary and small intestine (PubMed:8617204, PubMed:8700872) Expressed in the prostate, testis and colon (PubMed:8700872)

VEGFC Antibody - Protocols

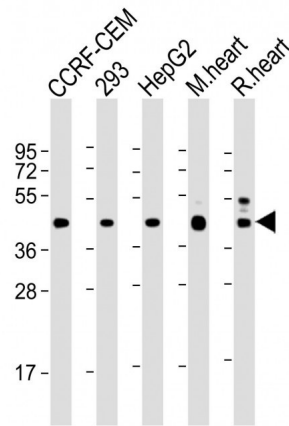
Provided below are standard protocols that you may find useful for product applications.

- [Western Blot](#)
- [Blocking Peptides](#)
- [Dot Blot](#)
- [Immunohistochemistry](#)
- [Immunofluorescence](#)
- [Immunoprecipitation](#)
- [Flow Cytometry](#)
- [Cell Culture](#)

VEGFC Antibody - Images



Western blot analysis of lysates from rat heart tissue, CEM cell line, mouse heart tissue (from left to right), using VEGFC Antibody (Cat. #AW5055). AW5055 was diluted at 1:1000 at each lane. A goat anti-mouse IgG H&L (HRP) at 1:10000 dilution was used as the secondary antibody. Lysates at 20ug per lane.



All lanes : Anti-VEGFC at 1:2000 dilution Lane 1: CCRF-CEM whole cell lysate Lane 2: 293 whole cell lysate Lane 3: HepG2 whole cell lysate Lane 4: mouse heart lysate Lane 5: rat heart lysate Lysates/proteins at 20 µg per lane. Secondary Goat Anti-mouse IgG, (H+L), Peroxidase conjugated at 1/10000 dilution. Predicted band size : 47 kDa Blocking/Dilution buffer: 5% NFDM/TBST.

VEGFC Antibody - Background

The protein encoded by this gene is a member of the platelet-derived growth factor/vascular endothelial growth factor (PDGF/VEGF) family, is active in angiogenesis and endothelial cell growth, and can also affect the permeability of blood vessels. This secreted protein undergoes a complex proteolytic maturation, generating multiple processed forms which bind and activate VEGFR-3 receptors. Only the fully processed form can bind and activate VEGFR-2 receptors. This protein is structurally and functionally similar to vascular endothelial growth factor D. [provided by RefSeq].

VEGFC Antibody - References

- Chen, X., et al. *Cancer Sci.* 101(11):2384-2390(2010)
- Romero, R., et al. *Am. J. Obstet. Gynecol.* 203 (4), 361 (2010) :
- Bailey, S.D., et al. *Diabetes Care* 33(10):2250-2253(2010)
- Deguchi, K., et al. *Anticancer Res.* 30(6):2361-2366(2010)
- Johnatty, S.E., et al. *PLoS Genet.* 6 (7), E1001016 (2010) :